



BUILDING A BETTER I-4

Stay Informed:

- » Project Hotline: 844-ULT-INFO (858-4636)
- » Sign up for email and text alerts at I4Ultimate.com
- » For real-time traffic conditions call 511, download Florida 511 mobile apps or visit FL511.com
- » Follow @i4ultimate on Twitter

TEMPORARY NIGHTTIME DETOUR OF EASTBOUND I-4 AT MAITLAND BOULEVARD

EASTBOUND INTERSTATE 4 (I-4) TRAFFIC TO BE DIVERTED USING MAITLAND BOULEVARD (STATE ROAD 414) INTERCHANGE RAMPS

The Florida Department of Transportation is temporarily detouring eastbound I-4 traffic through the Maitland Boulevard interchange at night. The nightly detour is scheduled to take place from 1 a.m. to 5 a.m. on May 2-5. Traffic will exit I-4, cross over Maitland Boulevard and enter back onto eastbound I-4 using existing ramps.

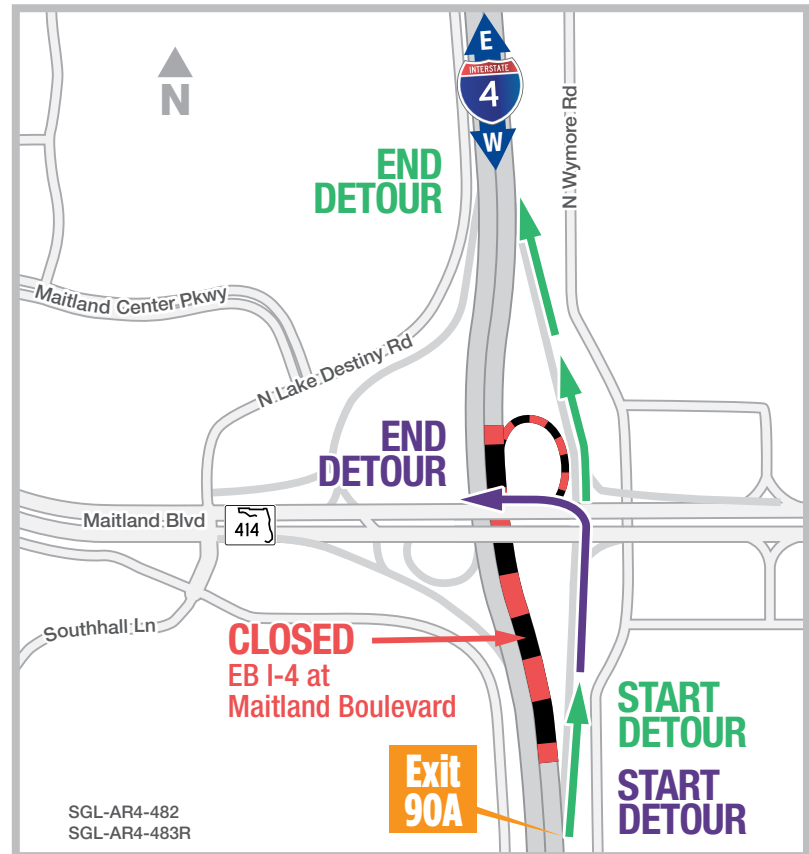
Law enforcement officers will be present on Maitland Boulevard to facilitate traffic flow. The eastbound I-4 exit loop ramp to westbound Maitland Boulevard (Exit 90B) will be closed at the same time to accommodate bridge construction. Left turns onto westbound Maitland Boulevard from exit 90A will be permitted during the detour. The nightly closures are necessary to set bridge girders for the new westbound Maitland Boulevard overpass. Updates for the closure will be available on i4Ultimate.com/alertsmap.

Traveling eastbound I-4 to continue on eastbound I-4:

- Use Exit 90A
- Continue straight across Maitland Boulevard
- Enter eastbound I-4 entrance ramp

Traveling eastbound I-4 to westbound Maitland Boulevard:

- Use Exit 90A
- Turn left onto Maitland Boulevard



PROJECT INFO

The \$2.3 billion I-4 Ultimate project is reconstructing 21 miles of interstate from west of Kirkman Road to east of State Road 434 in Longwood. For more information about I-4 Ultimate, contact David Parks, I-4 Ultimate Public Information Officer, at 844-ULT-INFO (844-858-4636) or DavidParks@i4Ultimate.com.

Closure subject to change. Construction progress, roadway conditions and weather may require schedule adjustments. Please check i4ultimate.com/alertsmap for the most up-to-date information.



Sign up for I-4 Construction Updates and Alerts at I4Ultimate.com
Get real-time traffic and incident alerts at FL511.com





BUILDING A BETTER I-4

Stay Informed:

- » Project Hotline: 844-ULT-INFO (858-4636)
- » Sign up for email and text alerts at I4Ultimate.com
- » For real-time traffic conditions call 511, download Florida 511 mobile apps or visit FL511.com
- » Follow @i4ultimate on Twitter

WESTBOUND I-4 ROLLING ROADBLOCK FROM C.R. 46A TO MAITLAND BLVD

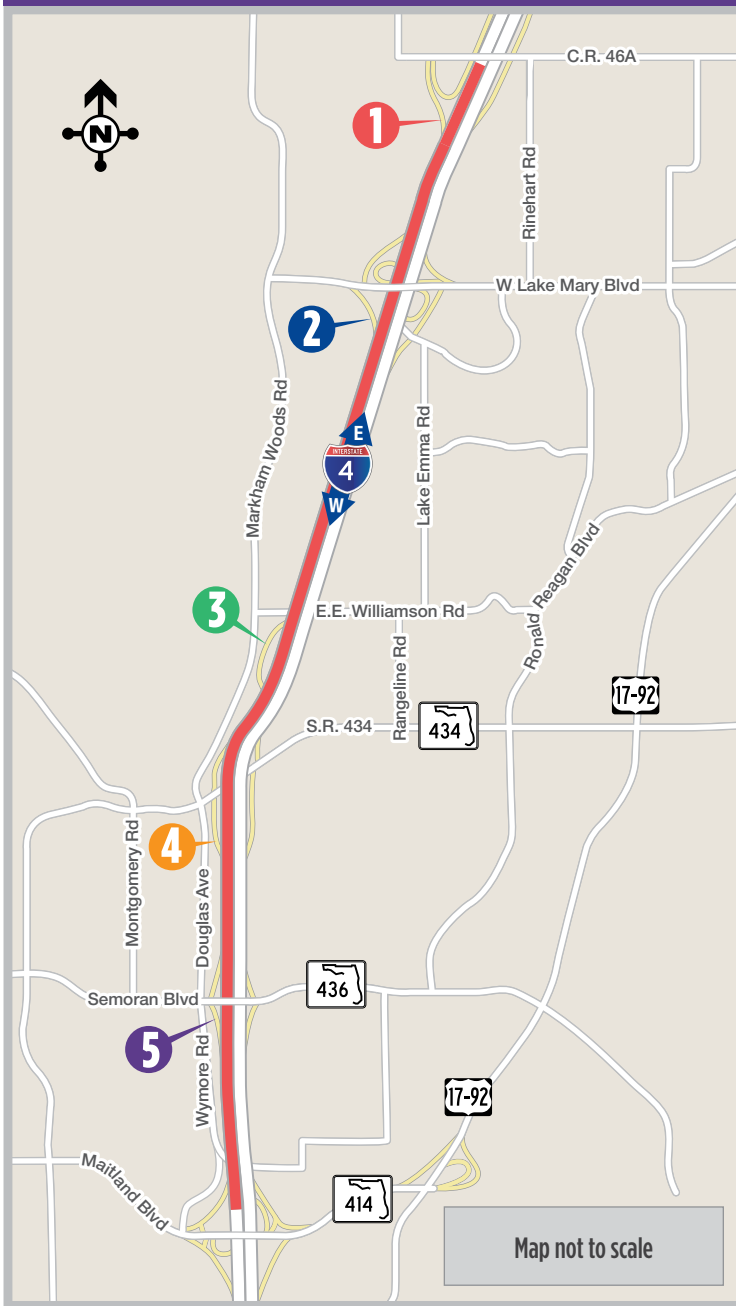
Rolling roadblocks on westbound Interstate 4 (I-4) from County Road 46A (C.R. 46A) to Maitland Boulevard (State Road 414) are scheduled between 12 a.m. and 5 a.m. on May 12-13. To ensure no vehicles jump ahead of the rolling roadblock, westbound I-4 entrance ramps will be temporarily blocked by law enforcement officers. As the pace car passes an interchange, its westbound I-4 entrance ramp will be reopened allowing motorists to enter and join the slow roll. The rolling roadblock and temporary closures of westbound I-4 entrance ramps create a 30-minute window for crews to remove a bridge structure extending over westbound I-4 from the old eastbound I-4 exit ramp to westbound Maitland Boulevard. Two or three rolling roadblocks are scheduled to occur each night. Public safety vehicles (law enforcement, fire rescue, etc.) are permitted to skip past the rolling roadblock to respond to an emergency call.

For real-time traffic information on I-4, including up-to-date progress on rolling roadblocks, stay tuned to the Florida Department of Transportation's 511 Traveler Information System. Visit FL511.com for I-4 travel times.

WESTBOUND I-4 RAMP CLOSURES

1	C.R. 46A	4	S.R. 434
2	Lake Mary Blvd	5	S.R. 436
3	WB I-4 Rest Area		

WESTBOUND I-4 RAMP CLOSURES



Map not to scale



Sign up for I-4 Construction Updates and Alerts at I4Ultimate.com
Get real-time traffic and incident alerts at FL511.com

