



BUILDING A BETTER I-4

Stay Informed:

- » Project Hotline: 844-ULT-INFO (858-4636)
- » Sign up for email and text alerts at fdot.tips/I4Alerts
- » Follow @i4Ultimate on Twitter
- » View our weekly construction update video at fdot.tips/I4Video
- » Subscribe to our monthly newsletter at fdot.tips/I4News

JOHN YOUNG PARKWAY UNDER I-4 CLOSING AT NIGHT

JOHN YOUNG PARKWAY (STATE ROAD 423) UNDER INTERSTATE 4 (I-4) IS CLOSING NIGHTLY AS SOON AS MID-NOVEMBER

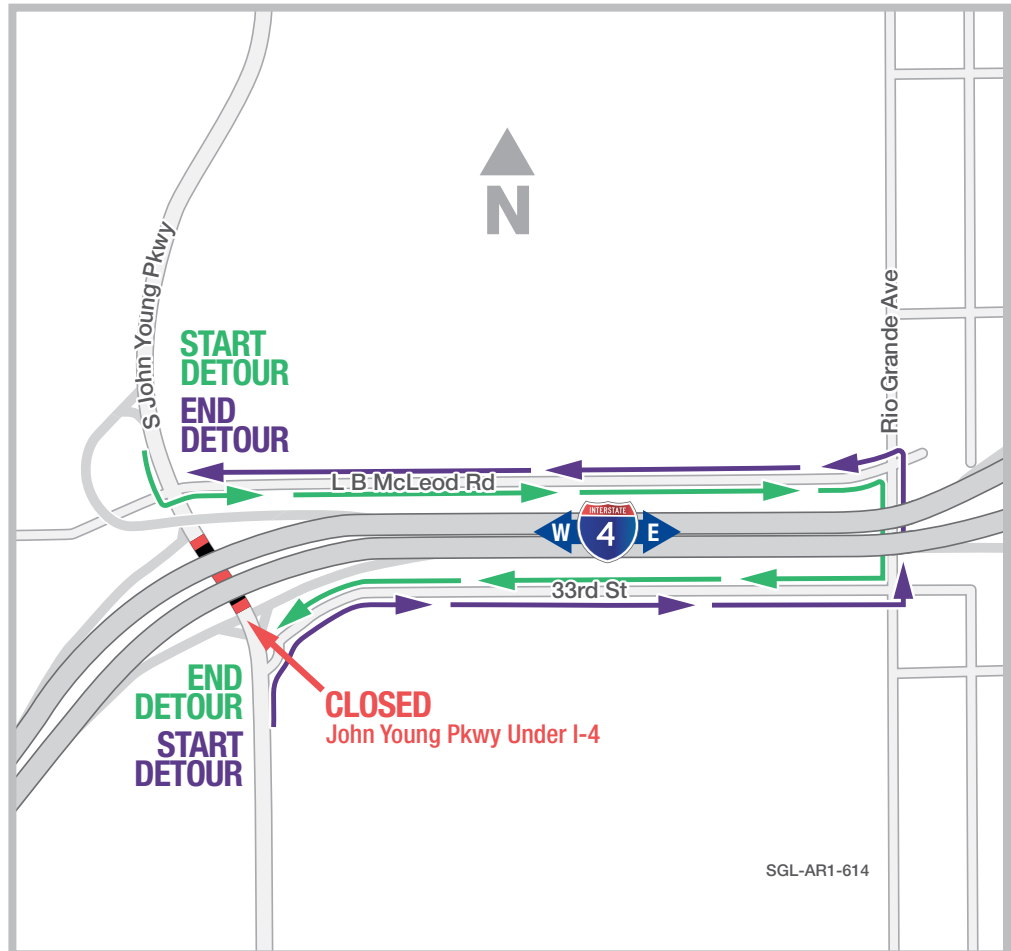
The Florida Department of Transportation is temporarily closing John Young Parkway underneath I-4 at night from 11 p.m. to 5:30 a.m. for nearly one week as soon as November 14. Motorists should note that access to the I-4 ramps at the interchange will remain open. The closure is necessary for girder placement. Exact dates of the closures will be available on I4Ultimate.com/alertsmap.

TRAVELING: Southbound on John Young Parkway

- Turn left onto LB McLeod Road
- Turn right onto Rio Grande Avenue
- Turn right onto 33rd Street
- Turn left onto John Young Parkway

TRAVELING: Northbound on John Young Parkway

- Turn right onto 33rd Street
- Turn left onto Rio Grande Avenue
- Turn left onto LB McLeod Road
- Turn right onto John Young Parkway



SGL-AR1-614

PROJECT INFO

The \$2.3 billion I-4 Ultimate project is reconstructing 21 miles of interstate from west of Kirkman Road to east of State Road 434 in Longwood. For more information about I-4 Ultimate, contact David Parks, I-4 Ultimate Public Information Officer, at 844-ULT-INFO (844-858-4636) or DavidParks@i4Ultimate.com.

Closure subject to change. Construction progress, roadway conditions and weather may require schedule adjustments. Please check i4ultimate.com/alertsmap for most up-to-date information.



Sign up for I-4 Construction Updates and Alerts at I4Ultimate.com
Learn about commuter options in Central Florida at reThinkYourCommute.com

