



# BUILDING A BETTER I-4

## Stay Informed:

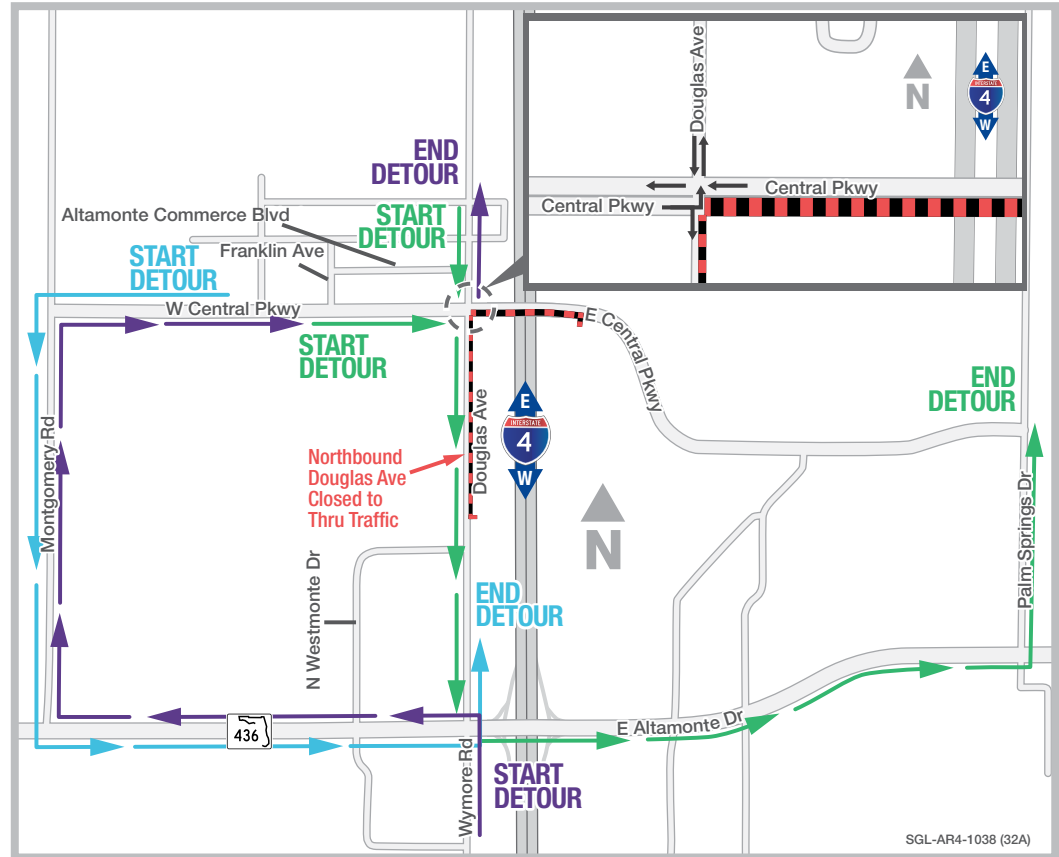
- » Project Hotline: 844-ULT-INFO (858-4636)
- » Sign up for email and text alerts at [fdot.tips/I4Alerts](https://fdot.tips/I4Alerts)
- » Follow @i4Ultimate on Twitter
- » View our weekly construction update video at [fdot.tips/I4Video](https://fdot.tips/I4Video)
- » Subscribe to our monthly newsletter at [fdot.tips/I4News](https://fdot.tips/I4News)

## DOUGLAS AVENUE/CENTRAL PARKWAY NIGHTLY CLOSURES

AT THE INTERSECTION OF DOUGLAS AVENUE AND CENTRAL PARKWAY, EXPECT NIGHTLY CLOSURES ON WEEKDAYS DURING MONTH OF JANUARY

The Florida Department of Transportation is temporarily closing lanes from 8 p.m. until 6 a.m. during the first couple of weeks of January at the intersection of Douglas Avenue and Central Parkway. The closures are necessary for drainage improvements. Nightly closures will alternate between two different sets:

- Northbound Douglas Avenue, just south of the Central Parkway intersection; and eastbound Central Parkway, just east of the Douglas Avenue intersection; and left turn from westbound Central Parkway to southbound Douglas Avenue
- (See back side of handout for detour map) Left turn from eastbound Central Parkway onto northbound Douglas Avenue; left turn from westbound Central Parkway onto southbound Douglas Avenue; southbound on Douglas Avenue; and left turn from northbound Douglas Avenue onto westbound Central Parkway



### Traveling northbound on Wymore Road to Douglas Avenue:

- Turn left onto State Road (S.R.) 436
- Turn right onto Montgomery Road
- Turn right onto Central Parkway

### Traveling westbound Central Parkway to southbound Douglas Avenue:

- Continue westbound on Central Parkway
- Turn left onto Montgomery Road
- Turn left onto S.R. 436

### Traveling eastbound Central Parkway or southbound Douglas Avenue to eastbound Central Parkway:

- Travel south on Douglas Avenue
- Turn left onto S.R. 436
- Turn left onto Palm Springs Drive

## PROJECT INFO

The \$2.3 billion I-4 Ultimate project is reconstructing 21 miles of interstate from west of Kirkman Road to east of State Road 434 in Longwood. For more information about I-4 Ultimate, contact David Parks, I-4 Ultimate Public Information Officer, at 844-ULT-INFO (844-858-4636) or [DavidParks@i4Ultimate.com](mailto:DavidParks@i4Ultimate.com).



Sign up for I-4 Construction Updates and Alerts at [I4Ultimate.com](https://I4Ultimate.com)  
Learn about commuter options in Central Florida at [reThinkYourCommute.com](https://reThinkYourCommute.com)





# BUILDING A BETTER I-4

## Stay Informed:

- » Project Hotline: 844-ULT-INFO (858-4636)
- » Sign up for email and text alerts at [fdot.tips/I4Alerts](http://fdot.tips/I4Alerts)
- » Follow @i4Ultimate on Twitter
- » View our weekly construction update video at [fdot.tips/I4Video](http://fdot.tips/I4Video)
- » Subscribe to our monthly newsletter at [fdot.tips/I4News](http://fdot.tips/I4News)

## DOUGLAS AVENUE/CENTRAL PARKWAY NIGHTLY CLOSURES

AT THE INTERSECTION OF DOUGLAS AVENUE AND CENTRAL PARKWAY, EXPECT NIGHTLY CLOSURES ON WEEKDAYS DURING MONTH OF JANUARY

The Florida Department of Transportation is temporarily closing lanes from 8 p.m. until 6 a.m. during the first couple of weeks of January at the intersection of Douglas Avenue and Central Parkway. The closures are necessary for drainage improvements. Nightly closures will alternate between two different sets:

- (See back side of handout for detour map) Northbound Douglas Avenue, just south of the Central Parkway intersection; and eastbound Central Parkway, just east of the Douglas Avenue intersection; and left turn from westbound Central Parkway to southbound Douglas Avenue
- Left turn from eastbound Central Parkway onto northbound Douglas Avenue; left turn from westbound Central Parkway onto southbound Douglas Avenue; southbound on Douglas Avenue; and left turn from northbound Douglas Avenue onto westbound Central Parkway

### Traveling eastbound Central Parkway to northbound Douglas Avenue:

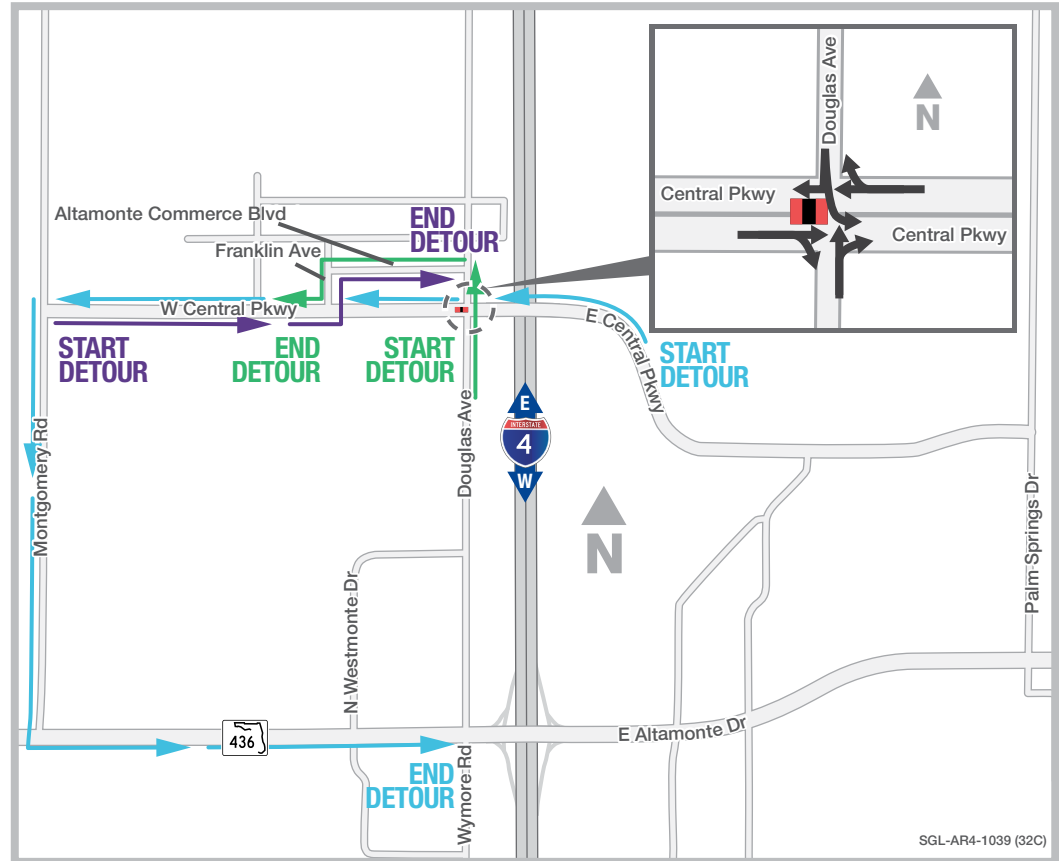
- Turn left onto Franklin Avenue
- Turn right onto Altamonte Commerce Boulevard

### Traveling southbound on Douglas Avenue, or westbound on Central Parkway, to southbound Douglas Avenue:

- Travel westbound on Central Parkway
- Turn left onto Montgomery Road
- Turn left onto S.R. 436

### Traveling northbound on Douglas Avenue to westbound Central Parkway:

- Continue north on Douglas Avenue
- Turn left onto Altamonte Commerce Boulevard
- Turn left onto Franklin Avenue



## PROJECT INFO

The \$2.3 billion I-4 Ultimate project is reconstructing 21 miles of interstate from west of Kirkman Road to east of State Road 434 in Longwood. For more information about I-4 Ultimate, contact David Parks, I-4 Ultimate Public Information Officer, at 844-ULT-INFO (844-858-4636) or [DavidParks@i4Ultimate.com](mailto:DavidParks@i4Ultimate.com).



Sign up for I-4 Construction Updates and Alerts at [I4Ultimate.com](http://I4Ultimate.com)  
Learn about commuter options in Central Florida at [reThinkYourCommute.com](http://reThinkYourCommute.com)

