



BUILDING A BETTER I-4

Stay Informed:

- » Project Hotline: 844-ULT-INFO (858-4636)
- » Sign up for email and text alerts at fdot.tips/I4Alerts
- » Follow @i4Ultimate on Twitter
- » View our weekly construction update video at fdot.tips/I4Video
- » Subscribe to our monthly newsletter at fdot.tips/I4News

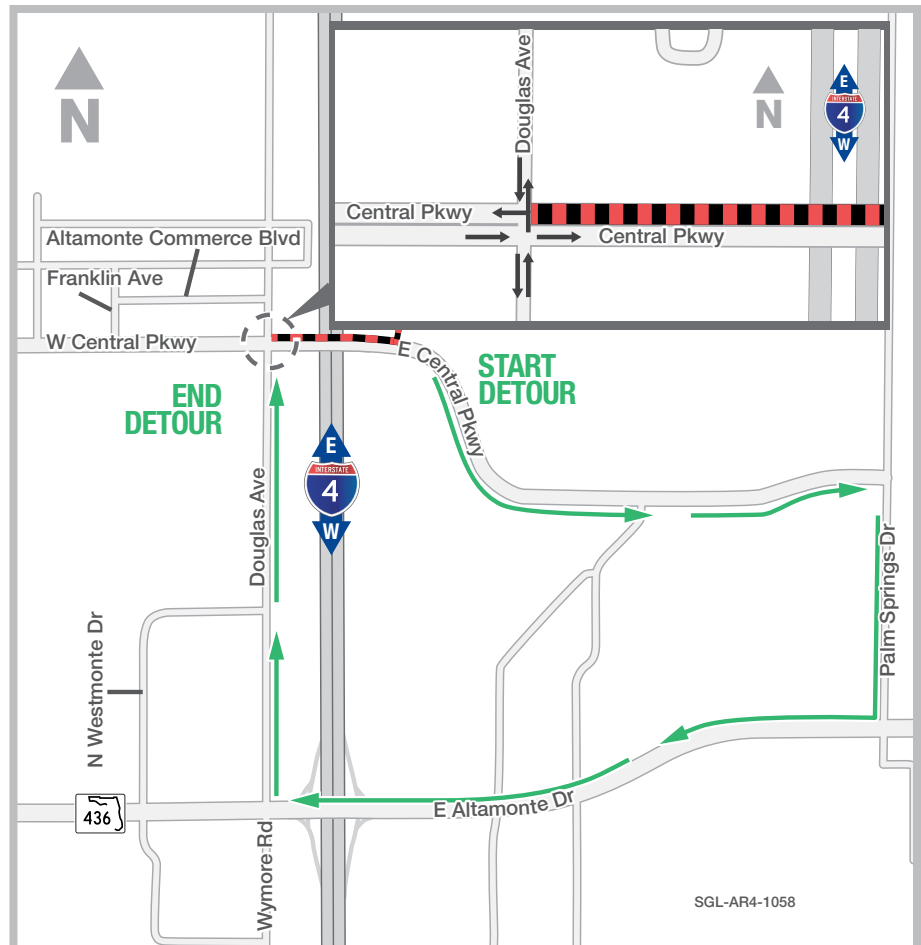
WESTBOUND LANES OF CENTRAL PARKWAY CLOSING EAST OF DOUGLAS AVENUE INTERSECTION ON WEEKEND OF JANUARY 20

WESTBOUND LANES OF CENTRAL PARKWAY, EAST OF DOUGLAS AVENUE INTERSECTION, CLOSING FROM 7 AM ON JANUARY 20 UNTIL 6 AM ON JANUARY 22

The Florida Department of Transportation is temporarily closing the westbound lanes of Central Parkway, east of the Douglas Avenue intersection, for the weekend of January 20. The closure will begin at 7 a.m. on Saturday and continue until 6 a.m. on Monday, January 22. The closure is necessary for drainage improvements.

Traveling westbound Central Parkway:

- Turn around and travel eastbound Central Parkway
- Turn right onto Palm Springs Drive
- Turn right onto S.R. 436
- Turn right onto Douglas Avenue



PROJECT INFO

The \$2.3 billion I-4 Ultimate project is reconstructing 21 miles of interstate from west of Kirkman Road to east of State Road 434 in Longwood. For more information about I-4 Ultimate, contact David Parks, I-4 Ultimate Public Information Officer, at 844-ULT-INFO (844-858-4636) or DavidParks@i4Ultimate.com.

Closure subject to change. Construction progress, roadway conditions and weather may require schedule adjustments. Please check i4ultimate.com/alertsmap for the most up-to-date information.



Sign up for I-4 Construction Updates and Alerts at I4Ultimate.com
Learn about commuter options in Central Florida at reThinkYourCommute.com

