



BUILDING A BETTER I-4

Stay Informed:

- » Project Hotline: 844-ULT-INFO (858-4636)
- » Sign up for email and text alerts at fdot.tips/I4Alerts
- » Follow @i4Ultimate on Twitter
- » View our weekly construction update video at fdot.tips/I4Video
- » Subscribe to our monthly newsletter at fdot.tips/I4News

WESTBOUND I-4 ON-RAMP FROM WESTBOUND MAITLAND BOULEVARD CLOSING WEEKEND OF FEBRUARY 9

WESTBOUND INTERSTATE 4 (I-4) ENTRANCE RAMP FROM WESTBOUND MAITLAND BOULEVARD (STATE ROAD 414) IS CLOSING FROM 10 PM ON FRIDAY, FEBRUARY 9, UNTIL 5 AM ON MONDAY, FEBRUARY 12

The Florida Department of Transportation is temporarily closing the westbound I-4 entrance ramp from westbound Maitland Boulevard from 10 p.m. on Friday, February 9, until 5 a.m. on Monday, February 12. The continuous closure is necessary to safely construct new bridges for the new elevated travel lanes of eastbound Maitland Boulevard.

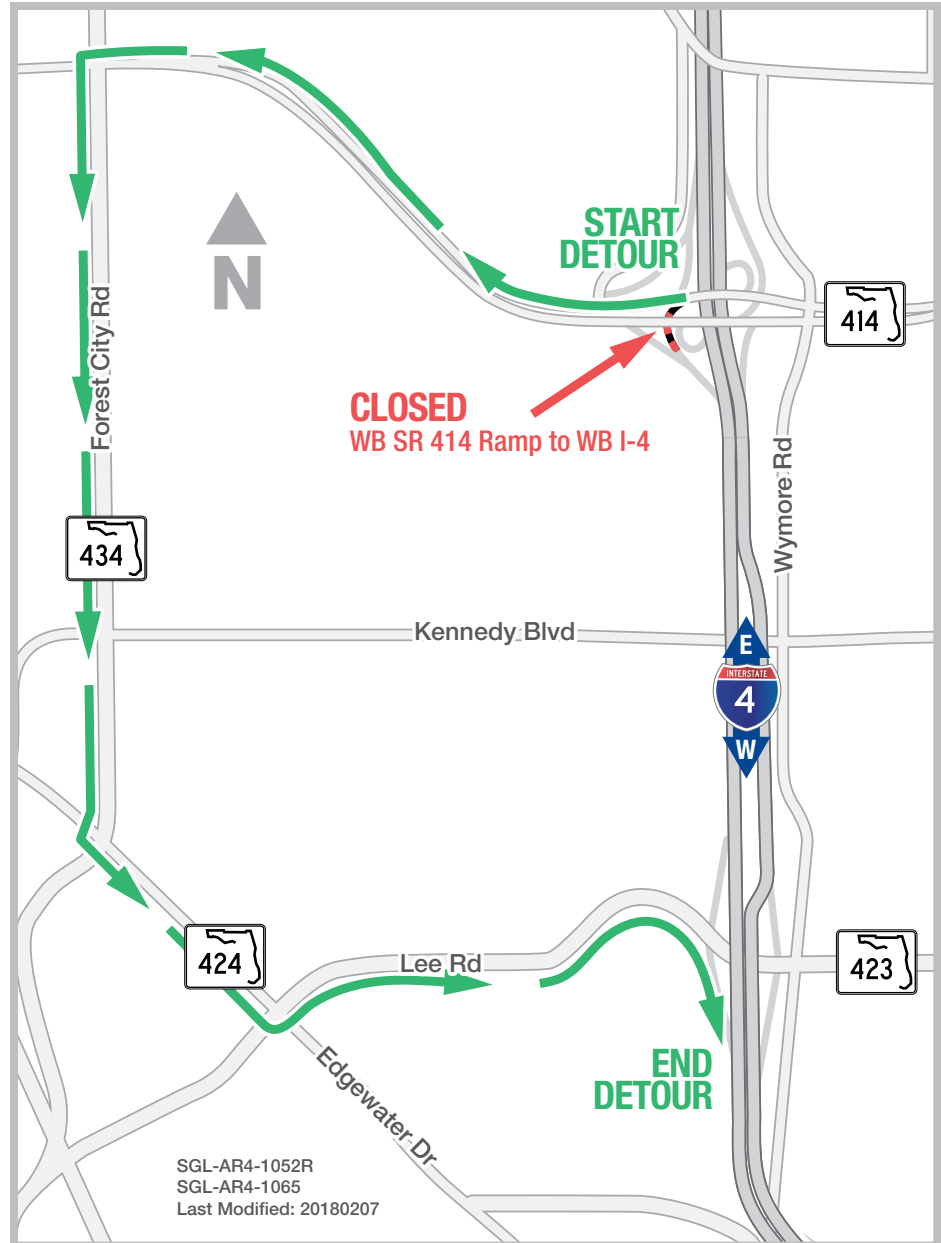
Motorists can expect nighttime closures of this ramp later this month. Exact dates of the closure will be available on i4ultimate.com/alertsmap.

Traveling westbound on Maitland Boulevard:

- Turn left onto State Road (S.R.) 434
- Turn left onto Edgewater Drive
- Turn left onto Lee Road (S.R. 423)
- Enter westbound I-4 on the right from Lee Road

PROJECT INFO

The \$2.3 billion I-4 Ultimate project is reconstructing 21 miles of interstate from west of Kirkman Road to east of State Road 434 in Longwood. For more information about I-4 Ultimate, contact David Parks, I-4 Ultimate Public Information Officer, at 844-ULT-INFO (844-858-4636) or DavidParks@i4ultimate.com.



Closure subject to change. Construction progress, roadway conditions and weather may require schedule adjustments. Please check i4ultimate.com/alertsmap for the most up-to-date information.



Sign up for I-4 Construction Updates and Alerts at I4Ultimate.com
Learn about commuter options in Central Florida at reThinkYourCommute.com

