



BUILDING A BETTER I-4

Stay Informed:

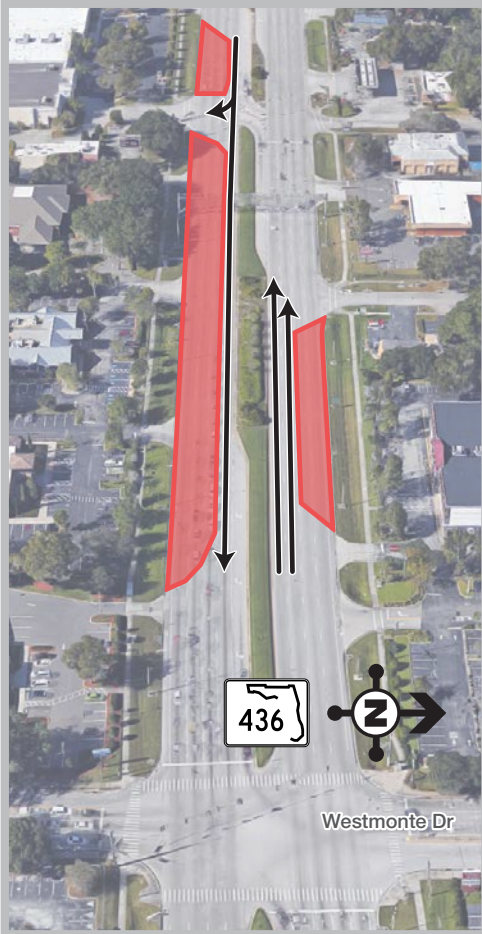
- » Project Hotline: 844-ULT-INFO (858-4636)
- » Sign up for email and text alerts at fdot.tips/I4Alerts
- » Follow @i4Ultimate on Twitter
- » View our weekly construction update video at fdot.tips/I4Video
- » Subscribe to our monthly newsletter at fdot.tips/I4News

MULTIPLE LANE CLOSURES ON S.R. 436 AT WESTMONTE DRIVE ON APRIL 22-27

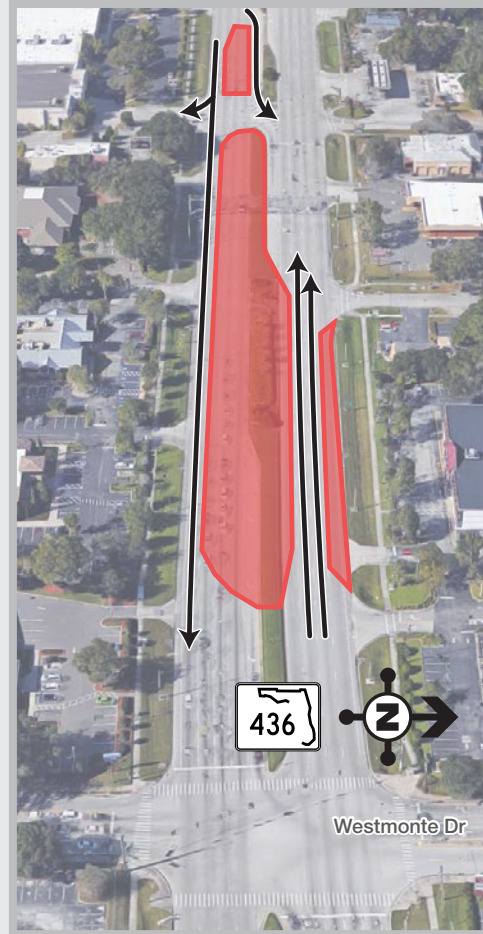
AS MANY AS SIX LANES ARE CLOSING ON STATE ROAD (S.R.) 436 AT THE WESTMONTE DRIVE INTERSECTION FROM 8 PM TO 5 AM ON APRIL 22-27

The Florida Department of Transportation is temporarily closing at night multiple lanes on S.R. 436, west of the Westmonte Drive intersection. The lane closures are scheduled each night from 8 p.m. to 5 a.m. on April 22, 23, 24, 25 and 26. Lane closures may change from night to night as crews work to remove an overhead sign structure. At least one through lane in each direction on S.R. 436 will be maintained at all times.

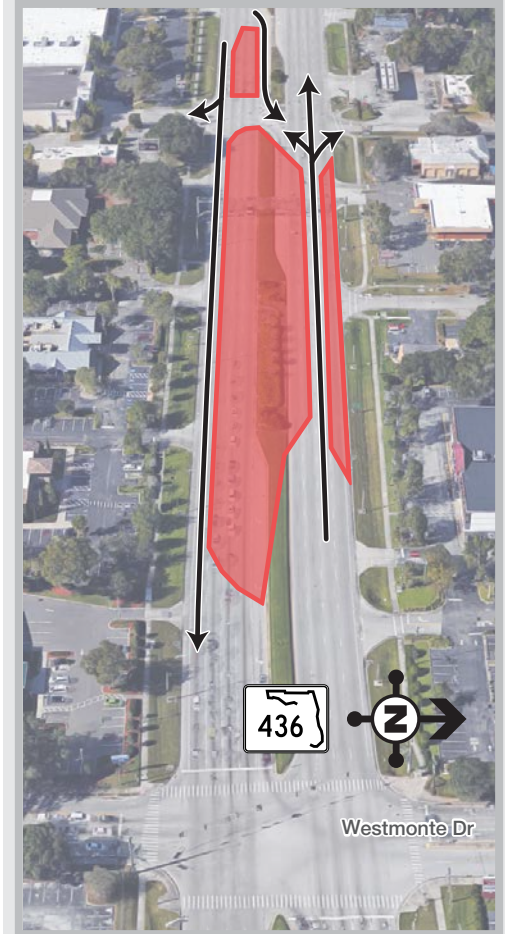
LANE CLOSURES SCHEDULED NIGHTS OF APRIL 22, 23 & 24



LANE CLOSURES SCHEDULED NIGHT OF APRIL 25



LANE CLOSURES SCHEDULED NIGHT OF APRIL 26



Closure subject to change. Construction progress, roadway conditions and weather may require schedule adjustments. Please check i4ultimate.com/alertsmap for the most up-to-date information.



Sign up for I-4 Construction Updates and Alerts at I4Ultimate.com
Learn about commuter options in Central Florida at reThinkYourCommute.com

