



# BUILDING A BETTER I-4

## Stay Informed:

- » Project Hotline: 844-ULT-INFO (858-4636)
- » Sign up for email and text alerts at [fdot.tips/I4Alerts](https://fdot.tips/I4Alerts)
- » Follow @i4Ultimate on Twitter
- » View our weekly construction update video at [fdot.tips/I4Video](https://fdot.tips/I4Video)
- » Subscribe to our monthly newsletter at [fdot.tips/I4News](https://fdot.tips/I4News)

## EASTBOUND I-4 UNDER MAITLAND BOULEVARD CLOSING FOR MULTIPLE NIGHTS

EASTBOUND INTERSTATE 4 (I-4) UNDER MAITLAND BOULEVARD (STATE ROAD 414) IS CLOSING 12 A.M. ON JUNE 11 AND 12 AND REOPENING AT 5 A.M.

The Florida Department of Transportation is temporarily closing eastbound I-4 under Maitland Boulevard at 12 a.m. on June 11 and 12 and reopening eastbound I-4 at 5 a.m. The eastbound I-4 exit ramps to both directions of Maitland Boulevard will close at 10 p.m. on June 10 and 11, and reopen at 5 a.m. the following mornings. The eastbound I-4 entrance ramp from Lee Road (State Road 423) also will be closed from 12 a.m. through 5 a.m. on June 11 and 12. All eastbound traffic must exit at Exit 88, Lee Road. The closures are necessary to safely place bridge girders above I-4 for the new eastbound Maitland Boulevard.

### Traveling eastbound on I-4 to continue on eastbound I-4:

- Use Exit 88
- Turn left onto Lee Road (State Road 423)
- Turn right onto Edgewater Drive
- Turn right onto Forest City Road (State Road 434)
- Turn right onto State Road (S.R.) 436
- Follow signage to re-enter eastbound I-4

### Traveling eastbound on I-4 to eastbound Maitland Boulevard:

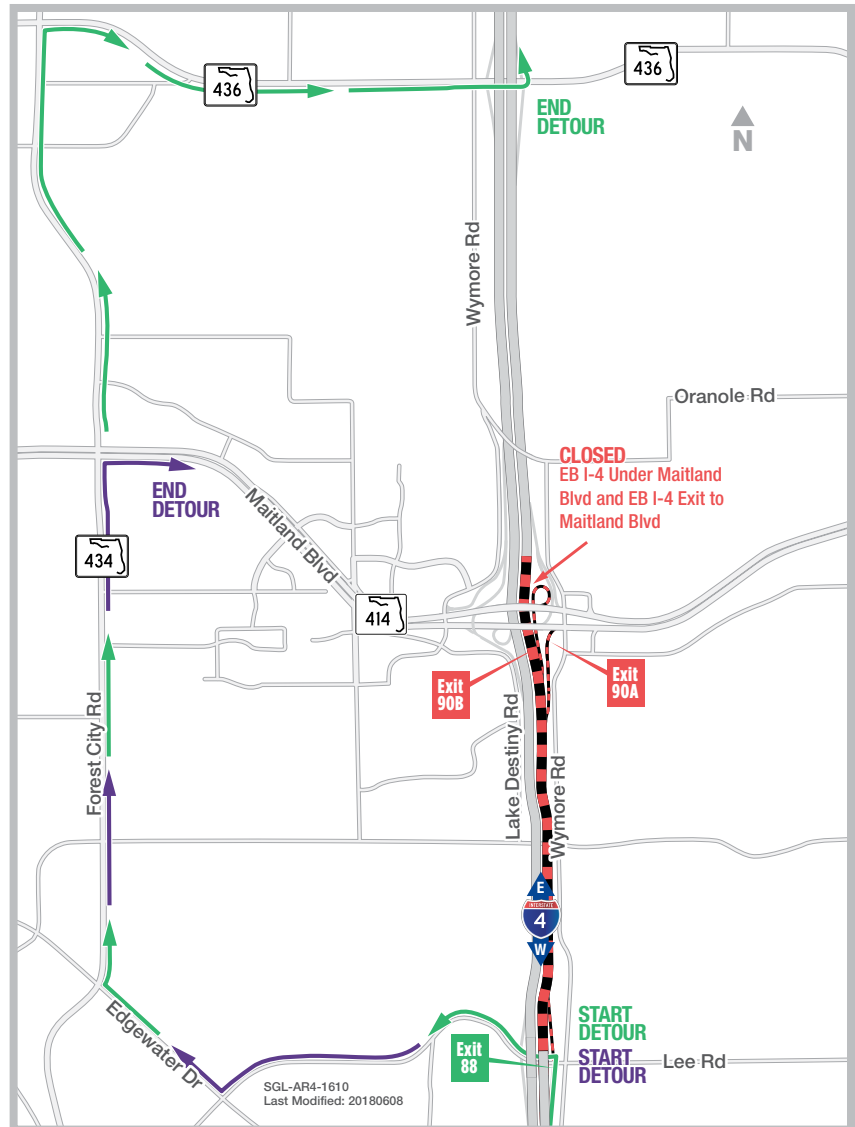
- Use Exit 88
- Turn left onto Lee Road (State Road 423)
- Turn right onto Edgewater Drive
- Turn right onto Forest City Road (State Road 434)
- Turn right onto eastbound Maitland Boulevard

### PROJECT INFO

The \$2.3 billion I-4 Ultimate project is reconstructing 21 miles of interstate from west of Kirkman Road to east of State Road 434 in Longwood. For more information about I-4 Ultimate, contact David Parks, I-4 Ultimate Public Information Officer, at 844-ULT-INFO (844-858-4636) or [DavidParks@i4Ultimate.com](mailto:DavidParks@i4Ultimate.com).

Closure subject to change. Construction progress, roadway conditions and weather may require schedule adjustments.

Please check [i4ultimate.com/alertsmap](https://i4ultimate.com/alertsmap) for the most up-to-date information.



Sign up for I-4 Construction Updates and Alerts at [I4Ultimate.com](https://I4Ultimate.com)  
Learn about commuter options in Central Florida at [reThinkYourCommute.com](https://reThinkYourCommute.com)

