



BUILDING A BETTER I-4

Stay Informed:

- » Project Hotline: 844-ULT-INFO (858-4636)
- » Sign up for email and text alerts at fdot.tips/I4Alerts
- » Follow @i4Ultimate on Twitter
- » View our weekly construction update video at fdot.tips/I4Video
- » Subscribe to our monthly newsletter at fdot.tips/I4News

WESTBOUND I-4 UNDER MAITLAND BOULEVARD CLOSING FOR MULTIPLE NIGHTS

WESTBOUND INTERSTATE 4 (I-4) UNDER MAITLAND BOULEVARD (STATE ROAD 414) IS CLOSING AT 12 A.M. ON JUNE 13-14 AND REOPENING AT 5 A.M.

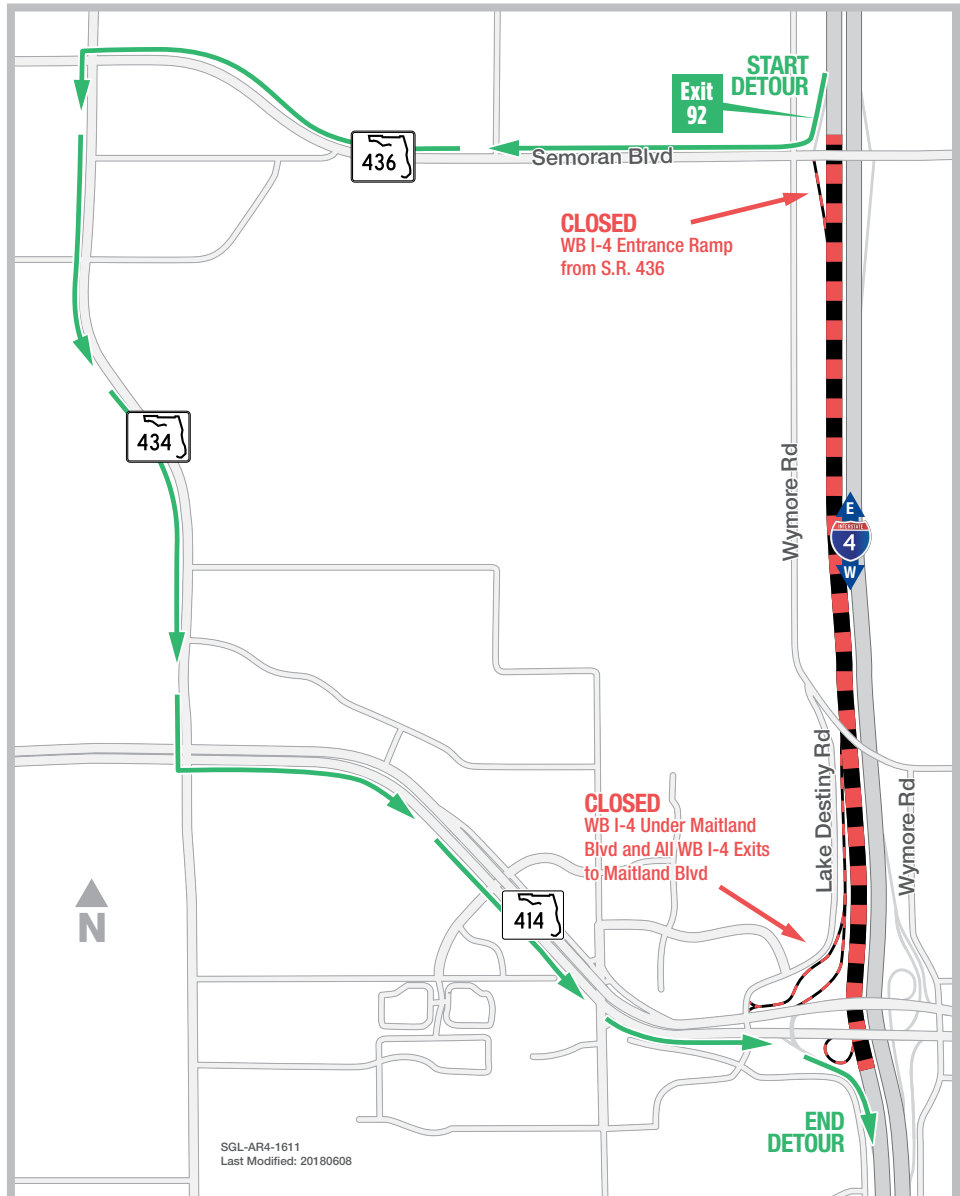
The Florida Department of Transportation is temporarily closing westbound I-4 under Maitland Boulevard at 12 a.m. on June 13 and 14 and reopening the roadway at 5 a.m. Law enforcement officers will be present along the detour route to facilitate traffic flow. The westbound I-4 entrance ramp from State Road (S.R.) 436 is closing at the same time to accommodate the closure. The closures are necessary to safely place bridge girders above I-4 for the new eastbound Maitland Boulevard.

Traveling westbound on I-4 to continue on westbound I-4:

- Use Exit 92
- Turn right onto State Road (S.R.) 436
- Turn left onto S.R. 434
- Turn left onto Maitland Boulevard
- Follow signage to re-enter westbound I-4

PROJECT INFO

The \$2.3 billion I-4 Ultimate project is reconstructing 21 miles of interstate from west of Kirkman Road to east of State Road 434 in Longwood. For more information about I-4 Ultimate, contact David Parks, I-4 Ultimate Public Information Officer, at 844-ULT-INFO (844-858-4636) or DavidParks@i4Ultimate.com.



Closure subject to change. Construction progress, roadway conditions and weather may require schedule adjustments. Please check i4ultimate.com/alertsmap for the most up-to-date information.



Sign up for I-4 Construction Updates and Alerts at I4Ultimate.com
Learn about commuter options in Central Florida at reThinkYourCommute.com

