



# BUILDING A BETTER I-4

## Stay Informed:

- » Project Hotline: 844-ULT-INFO (858-4636)
- » Sign up for email and text alerts at [fdot.tips/I4Alerts](https://fdot.tips/I4Alerts)
- » Follow @i4Ultimate on Twitter
- » Subscribe to our monthly newsletter at [fdot.tips/I4News](https://fdot.tips/I4News)

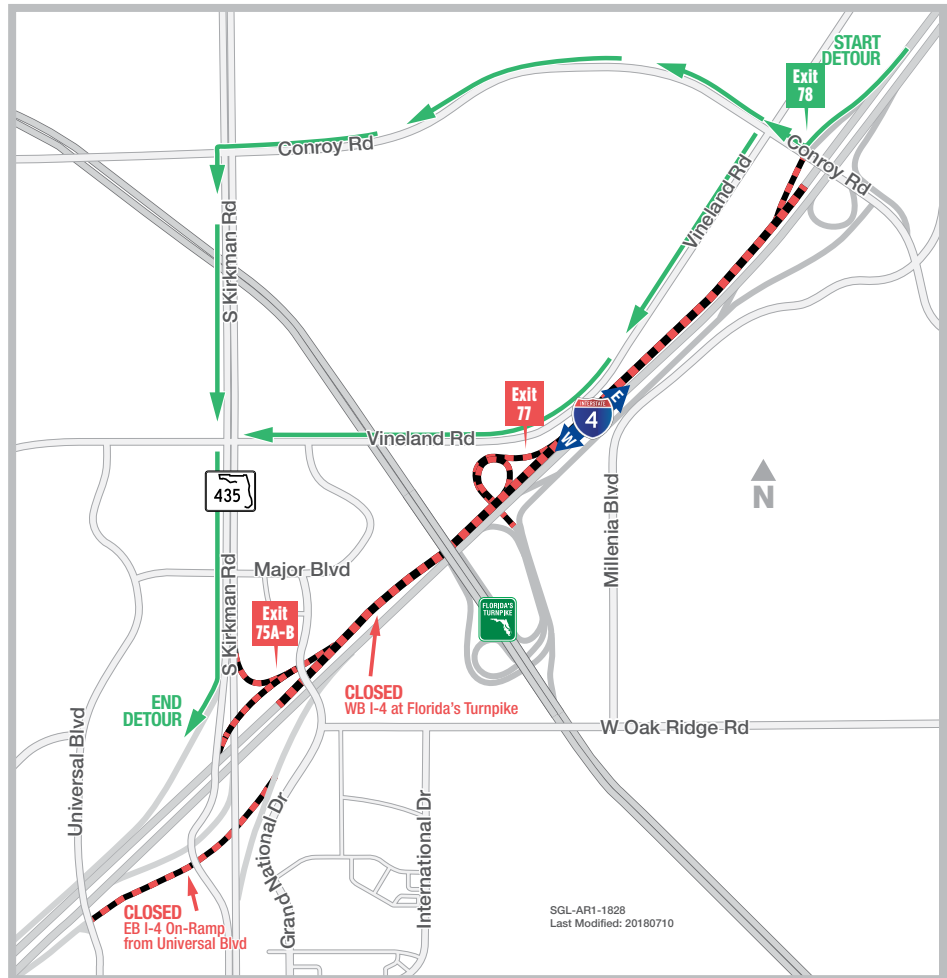
## WESTBOUND I-4 BETWEEN CONROY ROAD AND FLORIDA'S TURNPIKE CLOSING AT NIGHT ON JULY 16, 17, 18 AND 19

MULTIPLE RAMPS CLOSING AT CONROY ROAD, FLORIDA'S TURNPIKE AND KIRKMAN ROAD DURING OPERATION (SEE REVERSE SIDE FOR DETOURS)

The Florida Department of Transportation is temporarily closing westbound I-4 between Conroy Road and Florida's Turnpike from 12 a.m. until 5 a.m. on July 16, 17, 18 and 19. The westbound I-4 entrance ramp from Conroy Road, westbound I-4 exit and entrance ramps to Florida's Turnpike and exit ramps to northbound and southbound Kirkman Road (State Road 435) also will be closed during the same time (See reverse side for detours). The closures are necessary to safely demolish an old bridge structure at Florida's Turnpike.

### Traveling westbound on I-4 to continue on westbound I-4:

- Use Exit 78 to Conroy Road
  - Turn right onto Conroy Road
  - Turn left onto Kirkman Road (State Road 435)
  - Follow signage to re-enter westbound I-4
- OR
- Use Exit 78 to Conroy Road
  - Turn right onto Conroy Road
  - Turn left onto Vineland Road
  - Turn left onto Kirkman Road
  - Follow signage to re-enter westbound I-4



### PROJECT INFO

The \$2.3 billion I-4 Ultimate project is reconstructing 21 miles of interstate from west of Kirkman Road to east of State Road 434 in Longwood. For more information about I-4 Ultimate, contact David Parks, I-4 Ultimate Public Information Officer, at 844-ULT-INFO (844-858-4636) or [DavidParks@i4Ultimate.com](mailto:DavidParks@i4Ultimate.com).

Closure subject to change. Construction progress, roadway conditions and weather may require schedule adjustments. Please check [i4ultimate.com/alertsmap](https://i4ultimate.com/alertsmap) for the most up-to-date information.



Sign up for I-4 Construction Updates and Alerts at [I4Ultimate.com](https://I4Ultimate.com)  
Learn about commuter options in Central Florida at [reThinkYourCommute.com](https://reThinkYourCommute.com)





# BUILDING A BETTER I-4

## Stay Informed:

- » Project Hotline: 844-ULT-INFO (858-4636)
- » Sign up for email and text alerts at [fdot.tips/I4Alerts](https://fdot.tips/I4Alerts)
- » Follow @i4Ultimate on Twitter
- » Subscribe to our monthly newsletter at [fdot.tips/I4News](https://fdot.tips/I4News)

## MULTIPLE WESTBOUND I-4 RAMPS CLOSING AT NIGHT ON JULY 16, 17, 18 AND 19

WESTBOUND I-4 EXIT RAMPS TO FLORIDA'S TURNPIKE AND NORTHBOUND AND SOUTHBOUND KIRKMAN ROAD, AND ON-RAMPS FROM CONROY ROAD AND FLORIDA'S TURNPIKE CLOSING AT NIGHT

The Florida Department of Transportation is temporarily closing westbound I-4 between Conroy Road and Florida's Turnpike from 12 a.m. until 5 a.m. on July 16, 17, 18 and 19 (See reverse side for detours). During the nightly closures of westbound I-4, the exit ramps to Florida's Turnpike (Exit 77) and northbound (75B) and southbound (75A) Kirkman Road (State Road 435), and the on-ramps from Conroy Road and Florida's Turnpike will be closed from 10 p.m. to 5 a.m. on the nights of July 15-16, 16-17, 17-18 and 18-19. The closures are necessary to safely demolish old Florida's Turnpike bridge structures above the interstate.

### Traveling on Conroy Road to westbound I-4:

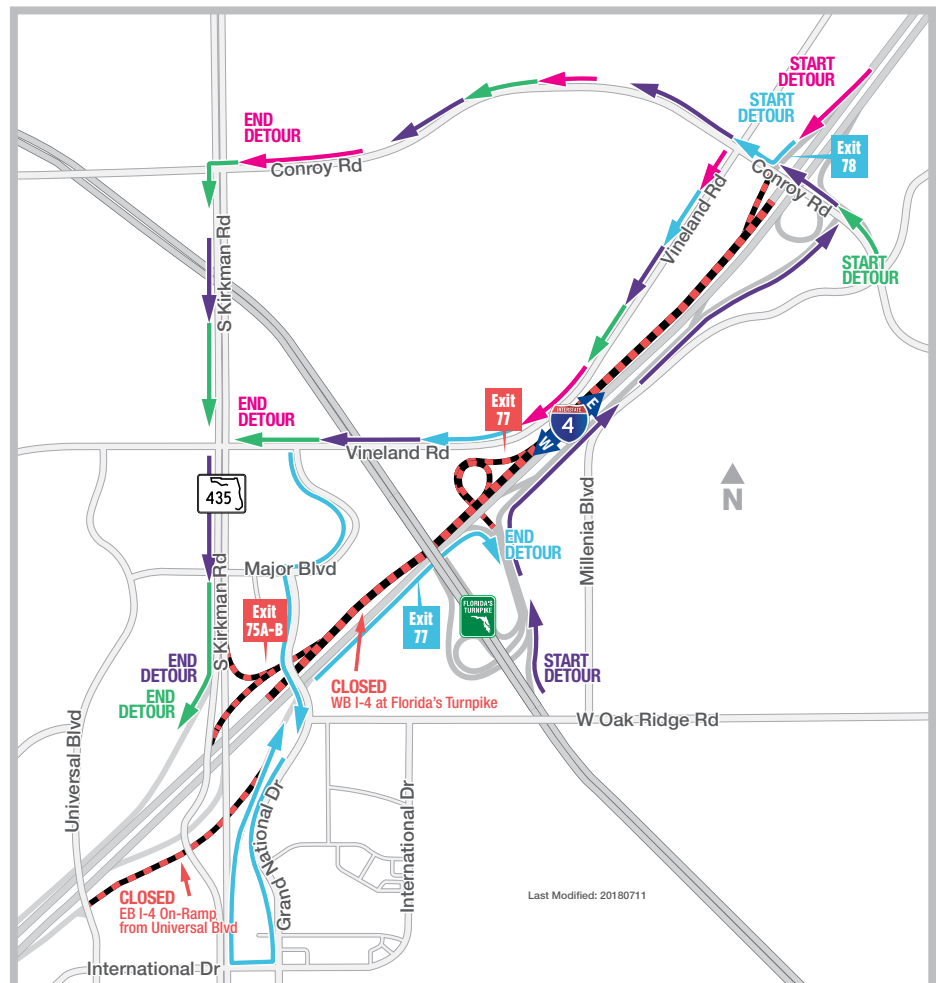
- Travel west on Conroy Road
  - Turn left onto Vineland Road
  - Turn left onto Kirkman Road
  - Follow signage to westbound I-4
- OR
- Travel west on Conroy Road
  - Turn left onto Kirkman Road
  - Follow signage to westbound I-4

### Traveling on Florida's Turnpike to westbound I-4:

- Take the eastbound exit for I-4
  - Use Exit 78 to Conroy Road
  - Turn left onto Conroy Road
  - Turn left onto Vineland Road
  - Turn left onto Kirkman Road
  - Follow signage to westbound I-4
- OR
- Take the eastbound exit for I-4
  - Use Exit 78 to Conroy Road
  - Turn left onto Conroy Road
  - Turn left onto Kirkman Road
  - Follow signage to westbound I-4

### Traveling on westbound I-4 to Florida's Turnpike:

- Use Exit 78 to Conroy Road
- Turn right onto Conroy Road
- Turn left onto Vineland Road
- Turn left onto Major Boulevard
- Continue straight onto Grand National Drive
- Turn right onto International Drive
- Turn right onto Kirkman Road
- Follow signage to eastbound I-4
- Use Exit 77 to Florida's Turnpike



### Traveling westbound I-4 to Kirkman Road:

- Use Exit 78 to Conroy Road
  - Turn right onto Conroy Road
  - Turn left onto Vineland Road
- OR
- Use Exit 78 to Conroy Road
  - Turn right onto Conroy Road



Sign up for I-4 Construction Updates and Alerts at [I4Ultimate.com](https://I4Ultimate.com)  
Learn about commuter options in Central Florida at [reThinkYourCommute.com](https://reThinkYourCommute.com)

