



BUILDING A BETTER I-4

Stay Informed:

- » Project Hotline: 844-ULT-INFO (858-4636)
- » Sign up for email and text alerts at fdot.tips/I4Alerts
- » Follow @i4Ultimate on Twitter
- » Subscribe to our monthly newsletter at fdot.tips/I4News

SB KIRKMAN ROAD OVER I-4 CLOSING MORNING OF DEC. 10

WESTBOUND INTERSTATE 4 (I-4) EXIT RAMP TO SOUTHBOUND KIRKMAN ROAD (STATE ROAD 435) CLOSING TWO HOURS EARLIER TO ACCOMODATE CONSTRUCTION ACTIVITY

The Florida Department of Transportation is temporarily closing southbound Kirkman Road, between Major Boulevard and International Drive from 12 a.m. to 5 a.m. on December 10. The westbound I-4 exit ramp to southbound Kirkman Road also closes at 10 p.m. on December 9 through 5 a.m. on December 10 to support the operation. These closures are necessary for a traffic shift on southbound Kirkman Road.

Traveling westbound on I-4 to Kirkman Road:

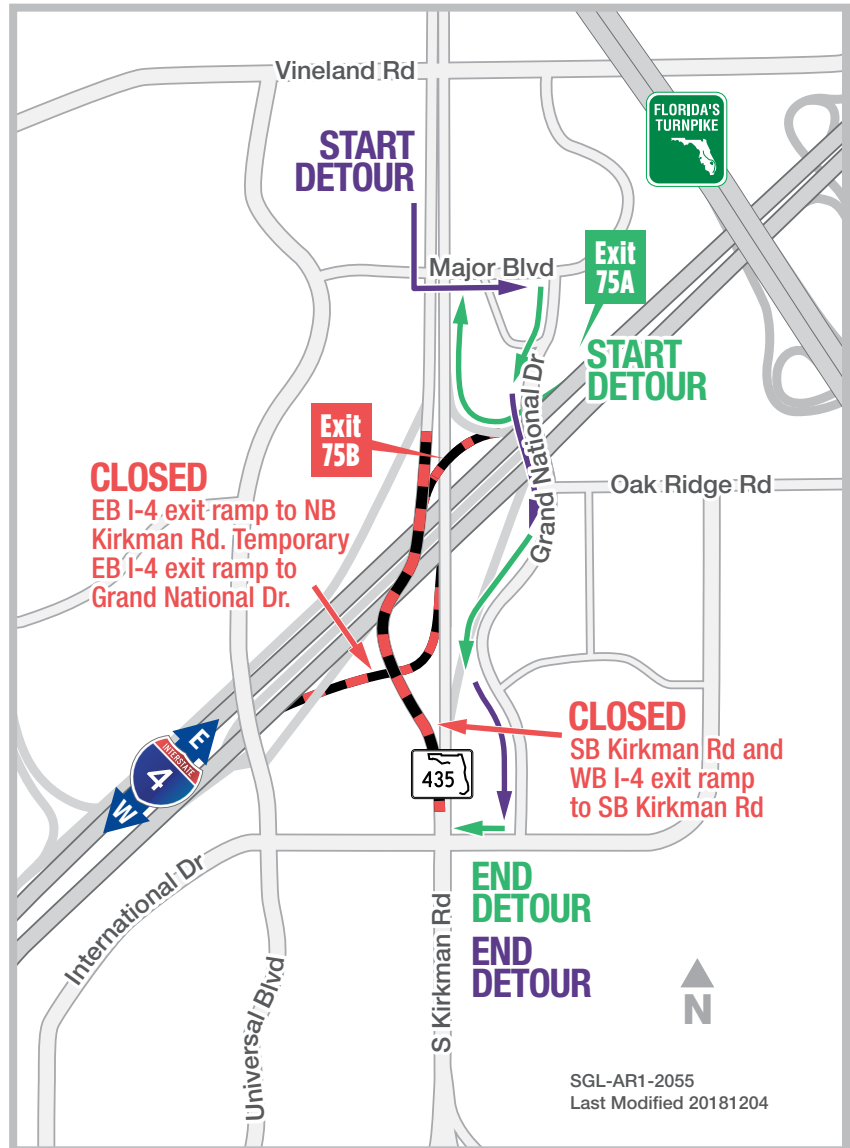
- Take Exit 75A to northbound Kirkman Road
- Turn right onto Major Boulevard
- Turn right onto Grand National Drive
- Turn right onto International Drive

Traveling southbound on Kirkman Road:

- Turn left onto Major Boulevard
- Turn right onto Grand National Drive
- Turn right onto International Drive

PROJECT INFO

The \$2.3 billion I-4 Ultimate project is reconstructing 21 miles of interstate from west of Kirkman Road to east of State Road 434 in Longwood. For more information about I-4 Ultimate, contact David Parks, I-4 Ultimate Public Information Officer, at 844-ULT-INFO (844-858-4636) or DavidParks@i4Ultimate.com.



Closures subject to change. Construction progress, roadway conditions and weather may require schedule adjustments. Please check i4ultimate.com/alertsmap for the most up-to-date information.



Sign up for I-4 Construction Updates and Alerts at I4Ultimate.com
Learn about commuter options in Central Florida at reThinkYourCommute.com

