



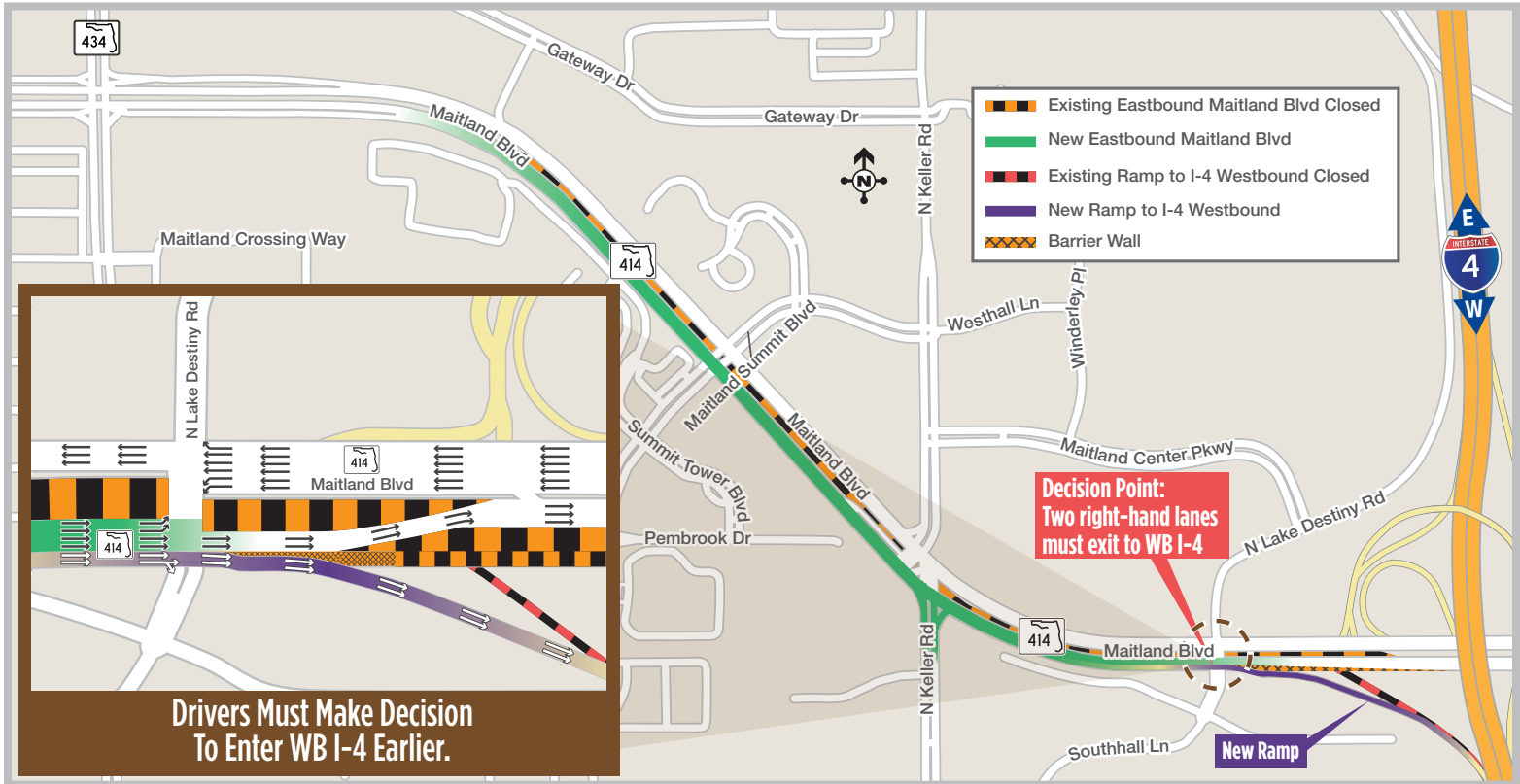
# BUILDING A BETTER I-4

## Stay Informed:

- » Project Hotline: 844-ULT-INFO (858-4636)
- » Sign up for email and text alerts at [I4Ultimate.com](http://I4Ultimate.com)
- » For real-time traffic conditions call 511, download Florida 511 mobile apps or visit [FL511.com](http://FL511.com)
- » Follow @i4ultimate on Twitter

## ATTENTION MAITLAND BOULEVARD MOTORISTS

NEW TRAFFIC PATTERN REQUIRES MOTORISTS TO ENTER TWO RIGHT-HAND LANES FOR WB I-4 ENTRANCE RAMP BEFORE LAKE DESTINY DRIVE INTERSECTION.



This long-term traffic pattern of approximately 1.25 miles in length will relocate the eastbound lanes to new pavement south of the existing traffic lanes. In addition, a newly realigned westbound I-4 entrance ramp from eastbound Maitland Boulevard will open. These new traffic patterns will require motorists to choose if they want to continue on eastbound Maitland Boulevard or enter the westbound I-4 entrance ramp before the intersection of Lake Destiny Road. The two right-hand lanes will be for the westbound I-4 entrance ramp. The new traffic pattern is necessary for the reconstruction of Maitland Boulevard.

Motorists should be aware that modifications or extensions to this schedule may become necessary due to weather delays or other unforeseen conditions. Motorists are advised to maintain a safe speed when driving in this vicinity through the work zone.

### PROJECT INFO

The \$2.3 billion I-4 Ultimate project is reconstructing 21 miles of interstate from west of Kirkman Road to east of State Road 434 in Longwood. For more information about I-4 Ultimate, contact David Parks, I-4 Ultimate Public Information Officer, at 844-ULT-INFO (844-858-4636) or [DavidParks@i4Ultimate.com](mailto:DavidParks@i4Ultimate.com).

See next page for ramp closure



Sign up for I-4 Construction Updates and Alerts at [I4Ultimate.com](http://I4Ultimate.com)  
Get real-time traffic and incident alerts at [FL511.com](http://FL511.com)





# BUILDING A BETTER I-4

## Stay Informed:

- » Project Hotline: 844-ULT-INFO (858-4636)
- » Sign up for email and text alerts at [I4Ultimate.com](http://I4Ultimate.com)
- » For real-time traffic conditions call 511, download Florida 511 mobile apps or visit [FL511.com](http://FL511.com)
- » Follow @i4ultimate on Twitter

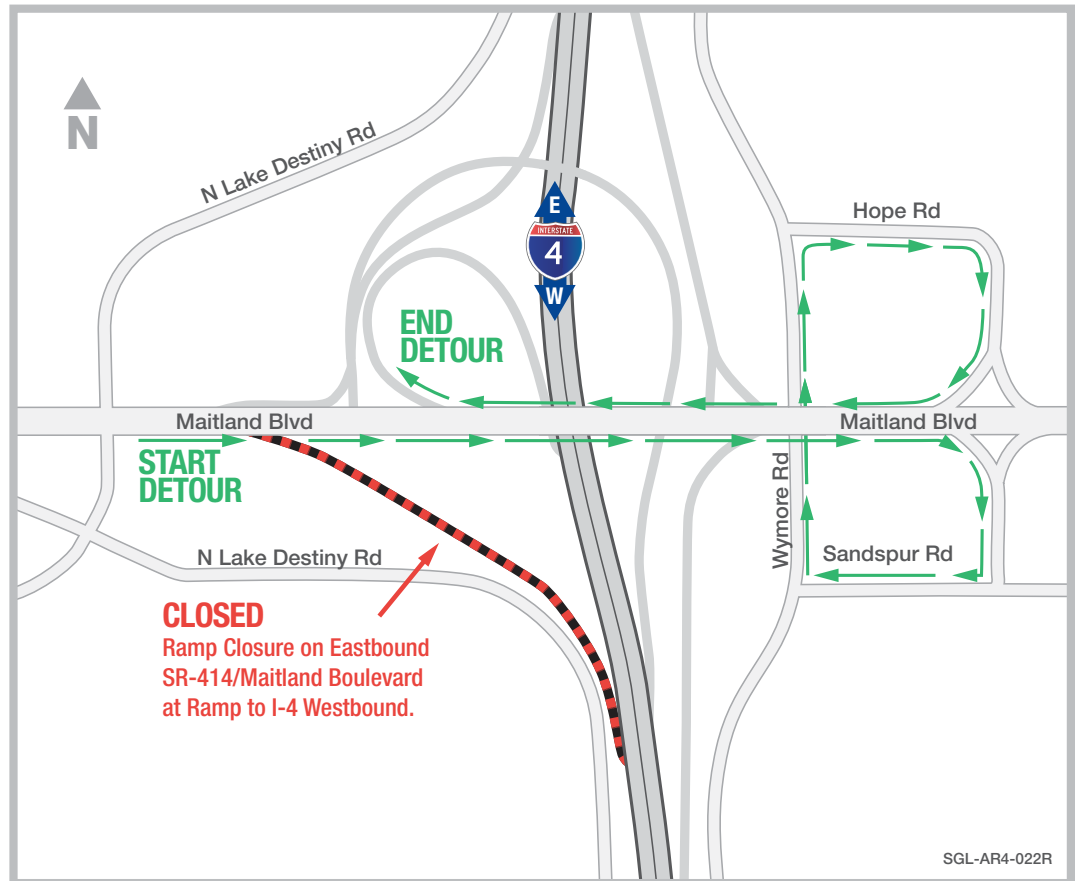
## WB I-4 ENTRANCE RAMP FROM EB MAITLAND BLVD CLOSING JULY 15–18

WESTBOUND INTERSTATE 4 (I-4) ENTRANCE RAMP FROM EASTBOUND MAITLAND BOULEVARD/STATE ROAD 414 (S.R. 414) IS CLOSING TEMPORARILY FROM FRIDAY, JULY 15, AT 8 PM UNTIL MONDAY, JULY 18, AT 6 AM.

The Florida Department of Transportation is temporarily closing the westbound I-4 entrance ramp from eastbound Maitland Boulevard (S.R. 414) for drainage work. The closure begins Friday, July 15, at 8 p.m. and ends Monday, July 18, at 6 a.m.

### STARTING: Eastbound Maitland Boulevard (S.R. 414)

Begin the detour by continuing on eastbound Maitland Boulevard over I-4 and take exit ramp on right to Sandspur Road. At the stop sign, turn right onto Sandspur Road. At traffic light, turn right on Wymore Road. At first traffic light, turn right onto Hope Road to enter westbound Maitland Boulevard. Proceed over I-4 to the westbound I-4 exit on the right to end the detour.



### PROJECT INFO

The \$2.3 billion I-4 Ultimate project is reconstructing 21 miles of interstate from west of Kirkman Road to east of State Road 434 in Longwood. For more information about I-4 Ultimate, contact David Parks, I-4 Ultimate Public Information Officer, at 844-ULT-INFO (844-858-4636) or [DavidParks@i4Ultimate.com](mailto:DavidParks@i4Ultimate.com).

Closure subject to change. Construction progress, roadway conditions and weather may require schedule adjustments. Please check [i4ultimate.com/alertsmap](http://i4ultimate.com/alertsmap) for most up-to-date information.



Sign up for I-4 Construction Updates and Alerts at [I4Ultimate.com](http://I4Ultimate.com)  
Get real-time traffic and incident alerts at [FL511.com](http://FL511.com)

