



# BUILDING A BETTER I-4

## Stay Informed:

- » Project Hotline: 844-ULT-INFO (858-4636)
- » Sign up for email and text alerts at [I4Ultimate.com](http://I4Ultimate.com)
- » For real-time traffic conditions call 511, download Florida 511 mobile apps or visit [FL511.com](http://FL511.com)
- » Follow @i4ultimate on Twitter

## DOUGLAS AVENUE/CENTRAL PARKWAY NIGHTLY CLOSURES

AT THE INTERSECTION OF DOUGLAS AVENUE AND CENTRAL PARKWAY, CLOSURES ARE EXPECTED AS SOON AS MID-JANUARY.

The Florida Department of Transportation is temporarily closing the northbound lanes of Douglas Avenue, just south of the Central Parkway intersection. The eastbound lanes of Central Parkway, just east of the Douglas Avenue intersection, will also be closed. The closures are scheduled from 10 p.m. to 6 a.m. on Jan. 23-27. The closures are necessary for drainage improvements. Following these closures, motorists should expect additional closures on the west side of the Douglas Avenue and Central Parkway intersection. For up-to-date information, sign up for advance construction alerts at [i4ultimate.com](http://i4ultimate.com).

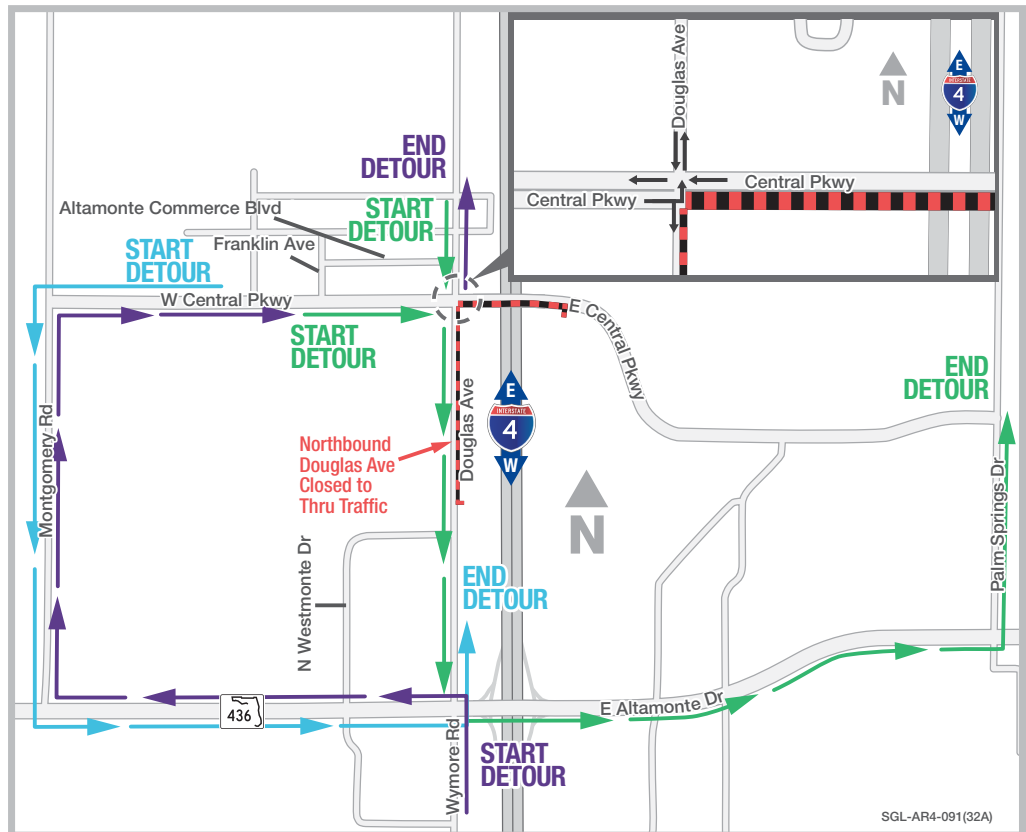
See more details and download this handout at: [I4Ultimate.com/Central](http://I4Ultimate.com/Central)

### Starting: Westbound on Central Parkway to turn onto southbound Douglas Avenue

Begin detour by turning left onto S.R. 436 and continuing to the Montgomery Road intersection. Turn right onto Montgomery Road. Continue on Montgomery Road until the Central Parkway intersection. Turn right on Central Parkway. End detour by turning left onto Douglas Avenue.

### Starting: Northbound on Douglas Avenue

Begin detour by continuing westbound on Central Parkway through the Douglas Avenue intersection. Turn left onto Montgomery Road. Continue on Montgomery Road until the S.R. 436 intersection. Turn left onto S.R. 436. End detour by turning left onto Douglas Avenue.



### Starting: Central Parkway (west of I-4), or southbound Douglas Avenue to turn left onto eastbound Central Parkway

Begin detour by heading southbound onto Douglas Avenue to State Road (S.R.) 436 intersection. Turn left onto S.R. 436. Continue on S.R. 436 until the Palm Springs Drive intersection. Turn left onto Palm Springs Drive. End detour by turning left onto Central Parkway.

## PROJECT INFO

The \$2.3 billion I-4 Ultimate project is reconstructing 21 miles of interstate from west of Kirkman Road to east of State Road 434 in Longwood. For more information about I-4 Ultimate, contact David Parks, I-4 Ultimate Public Information Officer, at 844-ULT-INFO (844-858-4636) or [DavidParks@i4Ultimate.com](mailto:DavidParks@i4Ultimate.com).

Closure subject to change. Construction progress, roadway conditions and weather may require schedule adjustments. Please check [i4ultimate.com/alertsmap](http://i4ultimate.com/alertsmap) for the most up-to-date information.



Sign up for I-4 Construction Updates and Alerts at [I4Ultimate.com](http://I4Ultimate.com)  
Get real-time traffic and incident alerts at [FL511.com](http://FL511.com)

