



BUILDING A BETTER I-4

Stay Informed:

- » Project Hotline: 844-ULT-INFO (858-4636)
- » Sign up for email and text alerts at I4Ultimate.com
- » For real-time traffic conditions call 511, download Florida 511 mobile apps or visit FL511.com
- » Follow @i4ultimate on Twitter

Tall Pylon near Lake Ivanhoe Serves Two Purposes

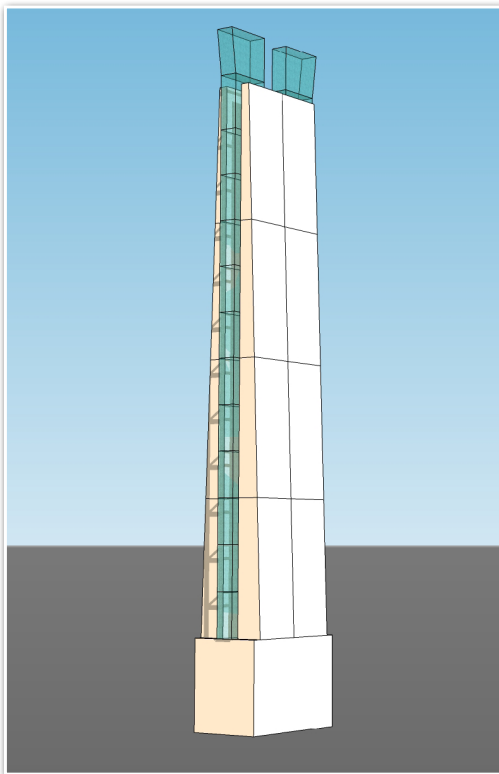
A tall concrete pylon on Interstate (I-4) near Lake Ivanhoe is the first of several to be built along the 21-mile stretch of the I-4 Ultimate Project.

The pylons serve both practical and decorative functions on the corridor being rebuilt and expanded in a public-private partnership managed by the Florida Department of Transportation (FDOT).

On the practical side, the towering posts mark points where motorists can directly connect to Express Lanes from other roadways without entering the general use lanes first. On the decorative side, the 90-foot-tall structures will be shaped in a distinctive way and lit at night helping create a signature corridor.

This first pylon was constructed early in the project so crews wouldn't have to build it surrounded by new bridges and ramps. Two other tall pylons will be erected later by Grand National Drive in south Orlando, and two more will go up at Central Parkway in Altamonte Springs. Other smaller decorative pylons will be placed throughout the corridor, adding to the projects aesthetics.

When completed in 2021, the I-4 Ultimate Project will continue to have six non-tolled general use lanes (three in each direction) plus additional auxiliary lanes. The four dynamically tolled Express Lanes (two in each direction) will be priced to maintain 50 mph, according to traffic conditions.



*The direct connect pylon is designed to identify points of direct access from local streets to Express Lanes.
(artist rendering, subject to change)*



The first direct connect pylon is constructed near Lake Ivanhoe.



Sign up for I-4 Construction Updates and Alerts at I4Ultimate.com
Get real-time traffic and incident alerts at FL511.com

