



# BUILDING A BETTER I-4

## Stay Informed:

- » Project Hotline: 844-ULT-INFO (858-4636)
- » Sign up for email and text alerts at [fdot.tips/I4Alerts](https://fdot.tips/I4Alerts)
- » Follow @i4Ultimate on Twitter
- » View our weekly construction update video at [fdot.tips/I4Video](https://fdot.tips/I4Video)
- » Subscribe to our monthly newsletter at [fdot.tips/I4News](https://fdot.tips/I4News)

## CLOSURES ON DOUGLAS AVENUE AND WYMORE ROAD NEAR S.R. 436

PORTIONS OF DOUGLAS AVENUE AND WYMORE ROAD ARE CLOSING NEAR STATE ROAD (S.R.) 436 FOR THE WEEKEND OF MARCH 16-19

The Florida Department of Transportation is temporarily closing portions of Douglas Avenue and Wymore Road near S.R. 436. The closures begin at 10 p.m. on Friday, March 16, until 6 a.m. on Monday, March 19. The Douglas Avenue closure is immediately adjacent to the S.R. 436 intersection. The Wymore Road closure is immediately adjacent to the Westmonte Drive intersection. Both closures are necessary for ongoing drainage and utility improvements in the area.

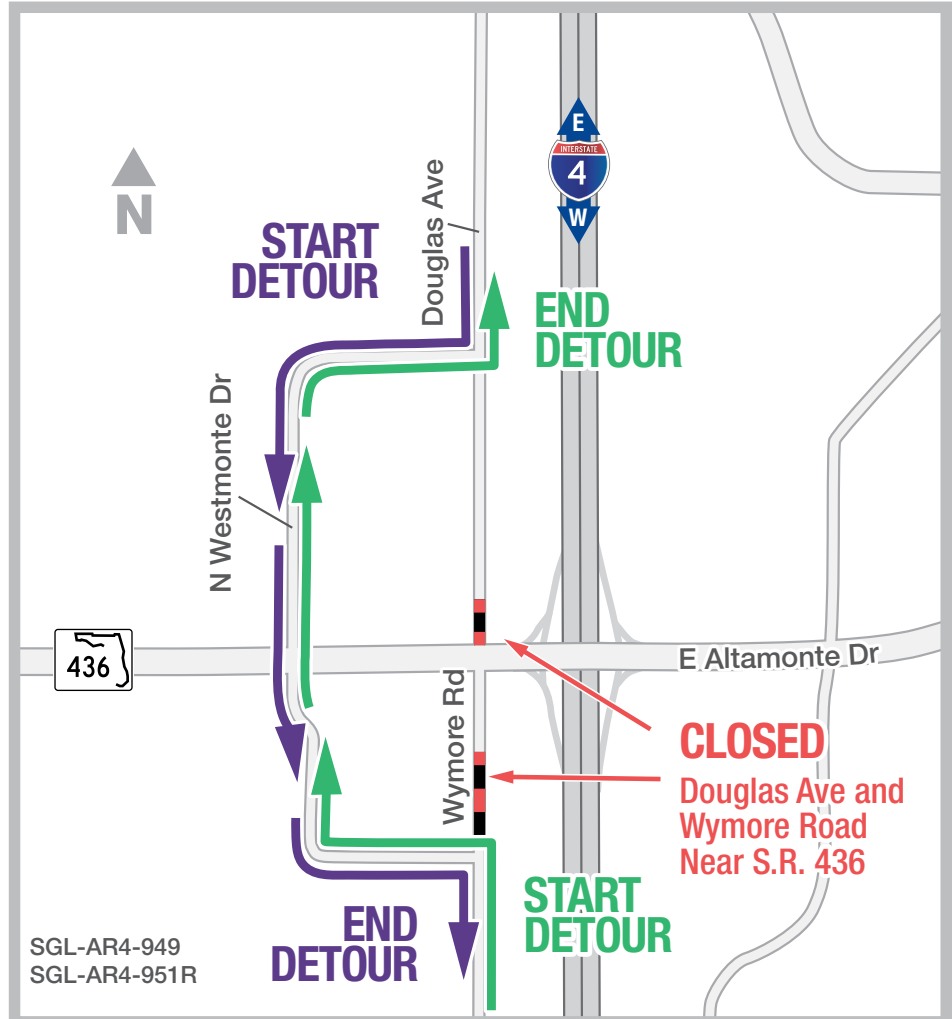
Access to local businesses will be maintained during construction.

### Traveling Southbound on Douglas Avenue:

- Turn right onto Westmonte Drive
- Continue through S.R. 436 intersection
- Turn right onto Wymore Road

### Traveling Northbound on Wymore Road:

- Turn left onto Westmonte Drive
- Continue through S.R. 436 intersection
- Turn left onto Douglas Avenue



SGL-AR4-949  
SGL-AR4-951R

### PROJECT INFO

The \$2.3 billion I-4 Ultimate project is reconstructing 21 miles of interstate from west of Kirkman Road to east of State Road 434 in Longwood. For more information about I-4 Ultimate, contact David Parks, I-4 Ultimate Public Information Officer, at 844-ULT-INFO (844-858-4636) or [DavidParks@i4Ultimate.com](mailto:DavidParks@i4Ultimate.com).



Sign up for I-4 Construction Updates and Alerts at [I4Ultimate.com](https://I4Ultimate.com)  
Learn about commuter options in Central Florida at [reThinkYourCommute.com](https://reThinkYourCommute.com)

