



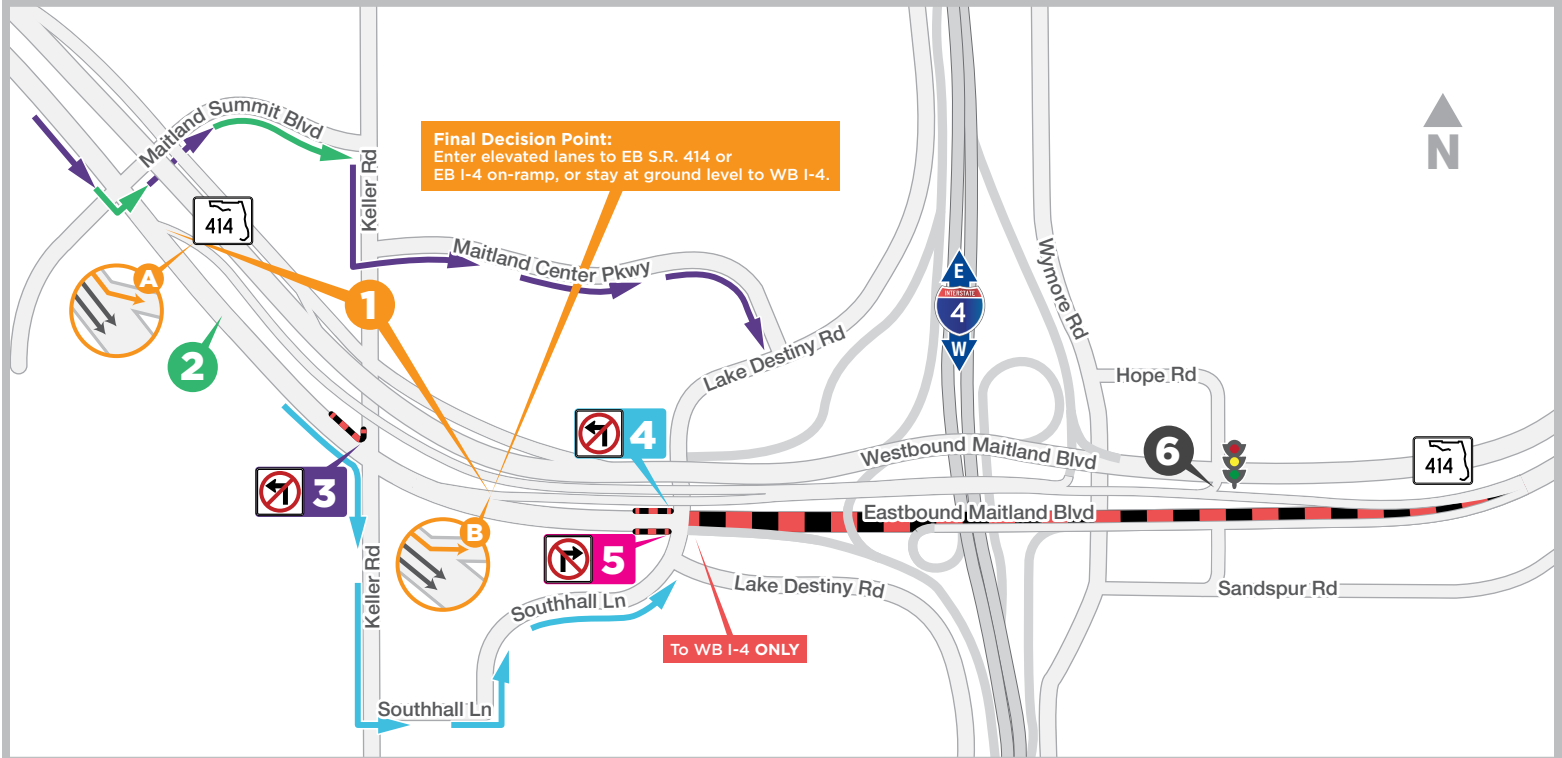
BUILDING A BETTER I-4

Stay Informed:

- » Project Hotline: 844-ULT-INFO (858-4636)
- » Sign up for email and text alerts at fdot.tips/I4Alerts
- » Follow @i4Ultimate on Twitter
- » Subscribe to our monthly newsletter at fdot.tips/I4News

SECOND ROUND OF MAJOR CHANGES TO EASTBOUND MAITLAND BOULEVARD (STATE ROAD 414) TO OPEN AS SOON AS SEPTEMBER 15

MOTORISTS NEED TO BE AWARE OF THESE SIX NEW TRAFFIC PATTERNS



- | | | | |
|---|---|---|--|
| 1 | Continue on eastbound Maitland Boulevard toward U.S. 17-92 or eastbound Interstate 4 (I-4) on-ramp by using one of two ramps to new elevated lanes. | 4 | Left turns onto northbound Lake Destiny Road are prohibited. Purple route is a suggested alternate. |
| 2 | Remain at ground level to access Maitland Summit Boulevard, southbound Keller Road or westbound I-4 on-ramp. | 5 | Right turns onto southbound Lake Destiny Road are prohibited. Blue route is a suggested alternate. |
| 3 | Left turns onto northbound Keller Road are prohibited. Green route is a suggested alternate. | 6 | New traffic signal operational at the Maitland Boulevard and Hope Road intersection. Access to Sandspur Road is eliminated from eastbound Maitland Boulevard. (See reverse side for details) |

BACKGROUND INFO

Temporary configuration to eastbound Maitland Boulevard is required to continue constructing the roadway's new elevated lanes and ramps at the I-4 interchange. Access change to Lake Destiny Road from eastbound Maitland Boulevard is permanent. Access change to northbound Keller Road from eastbound Maitland Boulevard is temporary and will be restored in approximately one year. Construction progress, roadway conditions and weather may require schedule adjustments. Visit i4ultimate.com/alertsmap for most up-to-date information.

More info: [i4Ultimate.com/EB414](https://i4ultimate.com/EB414)



Sign up for I-4 Construction Updates and Alerts at I4Ultimate.com
Learn about commuter options in Central Florida at reThinkYourCommute.com





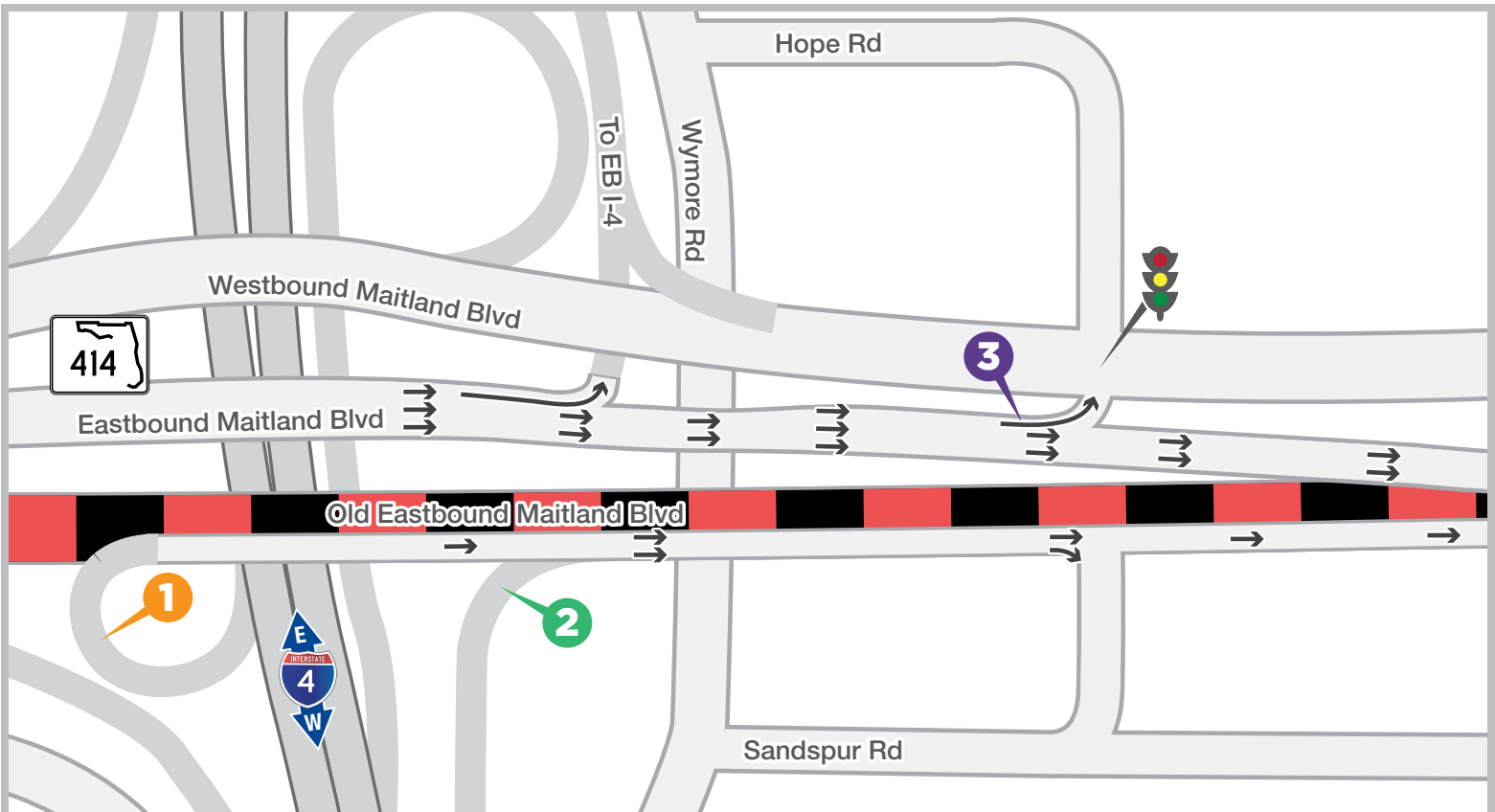
BUILDING A BETTER I-4

Stay Informed:

- » Project Hotline: 844-ULT-INFO (858-4636)
- » Sign up for email and text alerts at fdot.tips/I4Alerts
- » Follow @i4Ultimate on Twitter
- » Subscribe to our monthly newsletter at fdot.tips/I4News

NEW TEMPORARY CONFIGURATION OF MAITLAND BOULEVARD (STATE ROAD 414) AND SANDSPUR ROAD/HOPE ROAD INTERSECTION TO OPEN AS SOON AS SEPTEMBER 15

NEW TRAFFIC SIGNAL TO PROVIDE ACCESS TO HOPE ROAD FROM EASTBOUND MAITLAND BOULEVARD



- 1** Traffic exiting westbound Interstate 4 (I-4) to eastbound Maitland Boulevard has access to Sandspur Road but not Hope Road
- 2** Traffic exiting eastbound I-4 to eastbound Maitland Boulevard has access to Sandspur Road but not Hope Road
- 3** Traffic signal and new left turn lane on eastbound Maitland Boulevard provides safe access to Hope Road. Direct access to Sandspur Road from eastbound Maitland Boulevard is eliminated.

BACKGROUND INFO

Temporary configuration to eastbound Maitland Boulevard is required to continue constructing the roadway's new elevated lanes and ramps at the I-4 interchange. Access changes of eastbound Maitland Boulevard to Hope Road and Sandspur Road are permanent. Construction progress, roadway conditions and weather may require schedule adjustments. Visit i4ultimate.com/alertsmap for most up-to-date information.

More info: i4ultimate.com/EB414



Sign up for I-4 Construction Updates and Alerts at I4Ultimate.com
Learn about commuter options in Central Florida at reThinkYourCommute.com

