



BUILDING A BETTER I-4

Stay Informed:

- » Project Hotline: 844-ULT-INFO (858-4636)
- » Sign up for email and text alerts at fdot.tips/I4Alerts
- » Follow @i4Ultimate on Twitter
- » Subscribe to our monthly newsletter at fdot.tips/I4News

23 HOUR CONTINUOUS CLOSURE OF DOUGLAS AVENUE AND CENTRAL PARKWAY

A PORTION OF EASTBOUND CENTRAL PARKWAY AND NORTHBOUND DOUGLAS AVENUE IS CLOSING AT 7 AM ON JULY 7 AND REOPENING BY 6 AM ON JULY 8

The Florida Department of Transportation is temporarily closing the northbound lanes of Douglas Avenue, just south of the Central Parkway intersection and the eastbound lanes of Central Parkway, just east of the Douglas Avenue intersection from 7 a.m. on July 7 through 6 a.m. on July 8. These closures are necessary for drainage installation.

Looking to travel eastbound on Central Parkway:

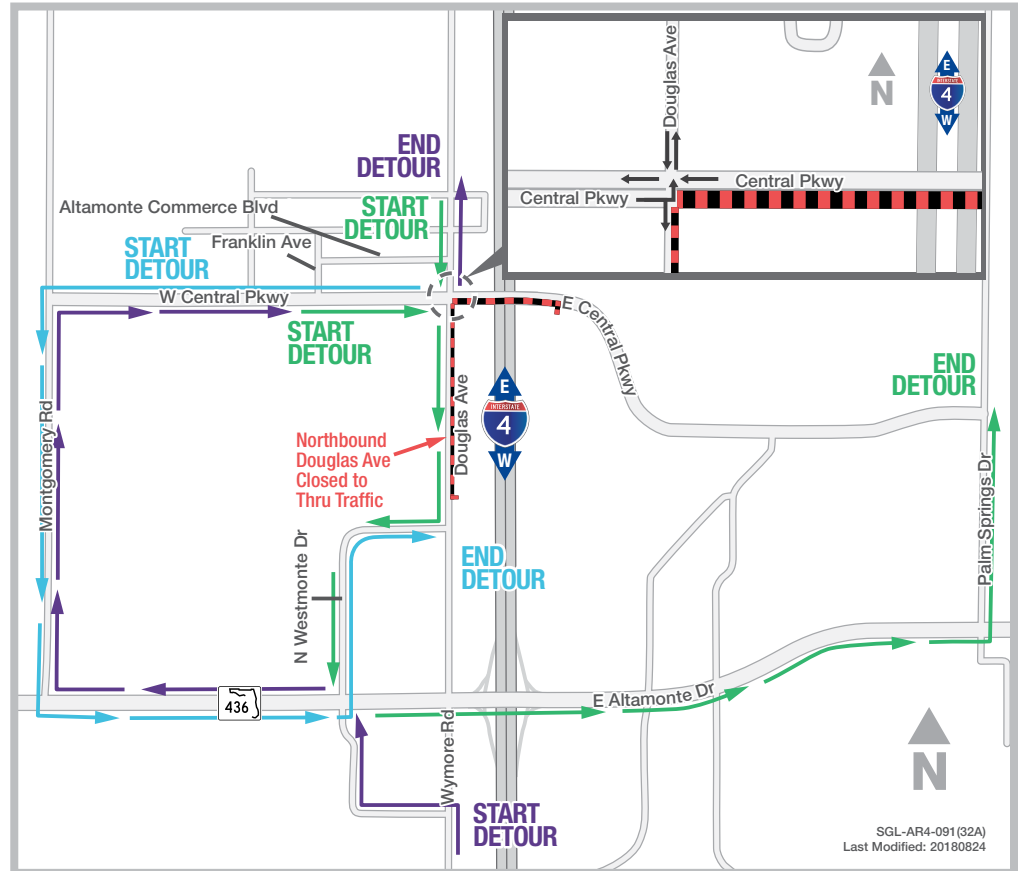
- Head southbound on Douglas Avenue
- Turn right onto Westmonte Drive
- Turn left onto State Road 436
- Turn left onto Palm Springs Drive

Traveling northbound on Wymore Road:

- Turn left onto Westmonte Drive
- Turn left onto State Road 436
- Turn right onto Montgomery Road
- Turn right onto Central Parkway

Traveling westbound on Central Parkway:

- Turn left Montgomery Road
- Turn left onto State Road 436
- Turn left onto Westmonte Drive



PROJECT INFO

The \$2.3 billion I-4 Ultimate project is reconstructing 21 miles of interstate from west of Kirkman Road to east of State Road 434 in Longwood. For more information about I-4 Ultimate, contact David Parks, I-4 Ultimate Community Outreach Specialist, at 844-ULT-INFO (844-858-4636) or DavidParks@i4Ultimate.com.

Closure subject to change. Construction progress, roadway conditions and weather may require schedule adjustments. Please check i4ultimate.com/alertsmap for the most up-to-date information.



Sign up for I-4 Construction Updates and Alerts at I4Ultimate.com

Learn about design and construction on the next 40 miles of I-4 at I4Beyond.com