



BUILDING A BETTER I-4

Stay Informed:

- » Project Hotline: 844-ULT-INFO (858-4636)
- » Sign up for email and text alerts at fdot.tips/I4Alerts
- » Follow @i4Ultimate on Twitter
- » Subscribe to our monthly newsletter at fdot.tips/I4News

WESTBOUND I-4 UNDER CENTRAL PARKWAY CLOSING NIGHTS OF NOV. 27 AND 28

WESTBOUND INTERSTATE 4 (I-4) UNDER CENTRAL PARKWAY IS CLOSING FROM MIDNIGHT TO 5 AM

The Florida Department of Transportation will be closing westbound I-4 under Central Parkway as soon as late mid-November. The closures are each night between midnight to 5 a.m. on November 27 and 28. The closures are necessary to remove a portion of the old Central Parkway bridge.

Traveling westbound I-4:

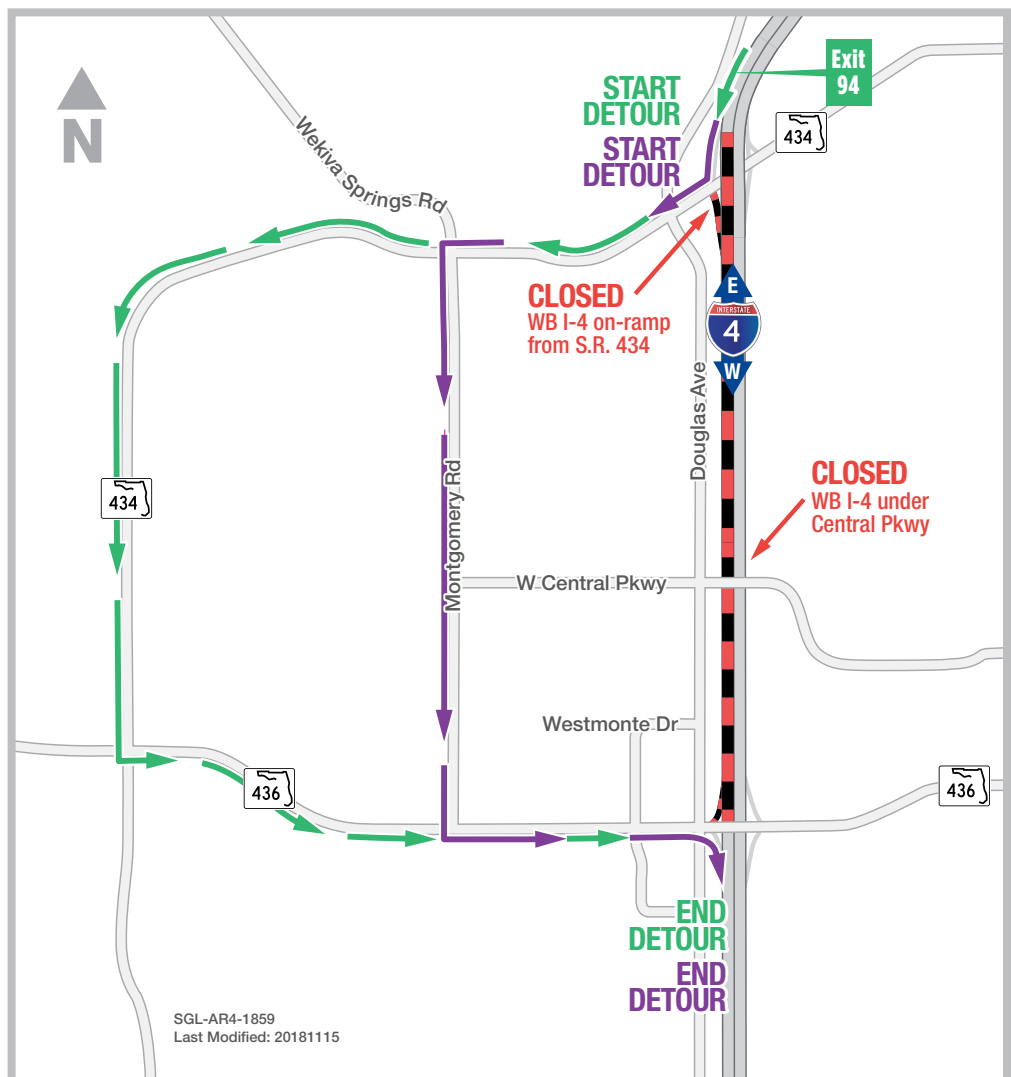
- Take Exit 94 to S.R. 434
- Turn right onto S.R. 434
- Turn left onto S.R. 436
- Follow signs to westbound I-4 on-ramp

Traveling westbound I-4:

- Take Exit 94 to S.R. 434
- Turn right onto S.R. 434
- Turn left onto Montgomery Road
- Turn left onto S.R. 436
- Follow signs to westbound I-4 on-ramp

PROJECT INFO

The \$2.3 billion I-4 Ultimate project is reconstructing 21 miles of interstate from west of Kirkman Road to east of State Road 434 in Longwood. For more information about I-4 Ultimate, contact David Parks, I-4 Ultimate Public Information Officer, at 844-ULT-INFO (844-858-4636) or DavidParks@i4Ultimate.com.



Closure subject to change. Construction progress, roadway conditions and weather may require schedule adjustments. Please check i4ultimate.com/alertsmap for the most up-to-date information.



Sign up for I-4 Construction Updates and Alerts at I4Ultimate.com
Learn about commuter options in Central Florida at reThinkYourCommute.com

