



BUILDING A BETTER I-4

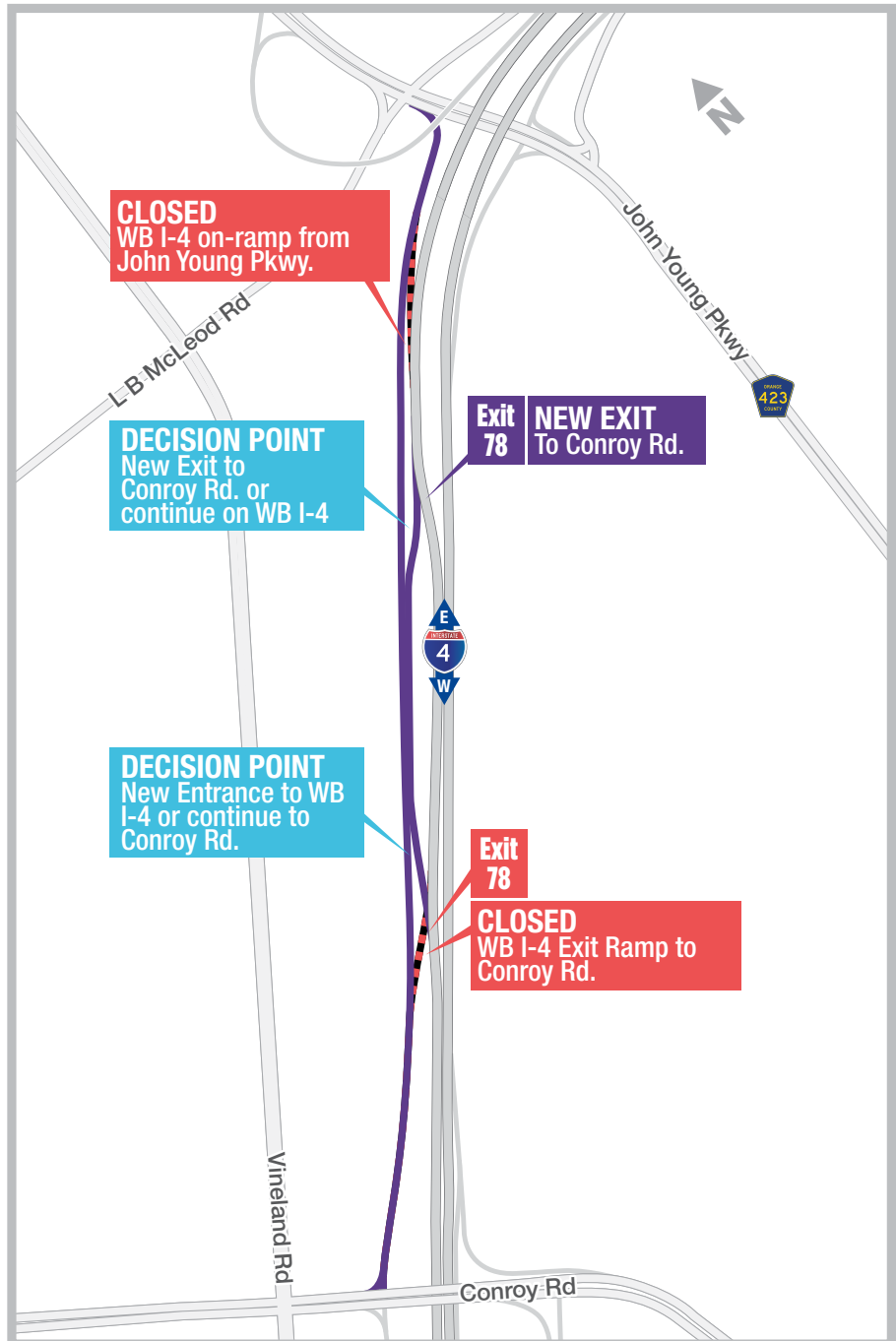
Stay Informed:

- » Project Hotline: 844-ULT-INFO (858-4636)
- » Sign up for email and text alerts at fdot.tips/I4Alerts
- » Follow @i4Ultimate on Twitter
- » Subscribe to our monthly newsletter at fdot.tips/I4News

WB I-4 ON-RAMP FROM JOHN YOUNG PKWY. AND EXIT RAMP TO CONROY RD. COMBINING MARCH 5

WESTBOUND INTERSTATE 4 (I-4) EXIT POINT TO CONROY RD. (EXIT 78) TO SHIFT A HALF-MILE SOONER

A temporary ramp configuration is scheduled to open the morning of Tuesday, March 5, combining traffic from the westbound I-4 on-ramp from John Young Parkway and the exit ramp to Conroy Road. The exit point for the westbound I-4 ramp to Conroy Road will shift nearly a half-mile sooner. Traffic will exit westbound I-4 to a temporary two-lane ramp system. The westbound I-4 entrance ramp from John Young Parkway will connect to the temporary ramp system. Motorists seeking to enter westbound I-4 from John Young Parkway will travel on the lengthened ramp for approximately one-half mile before merging with westbound I-4 traffic. The temporary configuration is necessary to create a safe work space for construction crews to continue building the new westbound I-4 travel lanes. On the night of Monday, March 4, the westbound I-4 on-ramp from John Young Parkway and the exit ramp to Conroy Road will temporarily close to shift the ramps to the temporary ramp system. See reverse side for detour routes.



Sign up for I-4 Construction Updates and Alerts at I4Ultimate.com
Learn about commuter options in Central Florida at reThinkYourCommute.com





BUILDING A BETTER I-4

Stay Informed:

- » Project Hotline: 844-ULT-INFO (858-4636)
- » Sign up for email and text alerts at fdot.tips/I4Alerts
- » Follow @i4Ultimate on Twitter
- » Subscribe to our monthly newsletter at fdot.tips/I4News

WB I-4 ON-RAMP FROM JOHN YOUNG PKWY. AND EXIT RAMP TO CONROY RD. CLOSING NIGHT OF MARCH 4

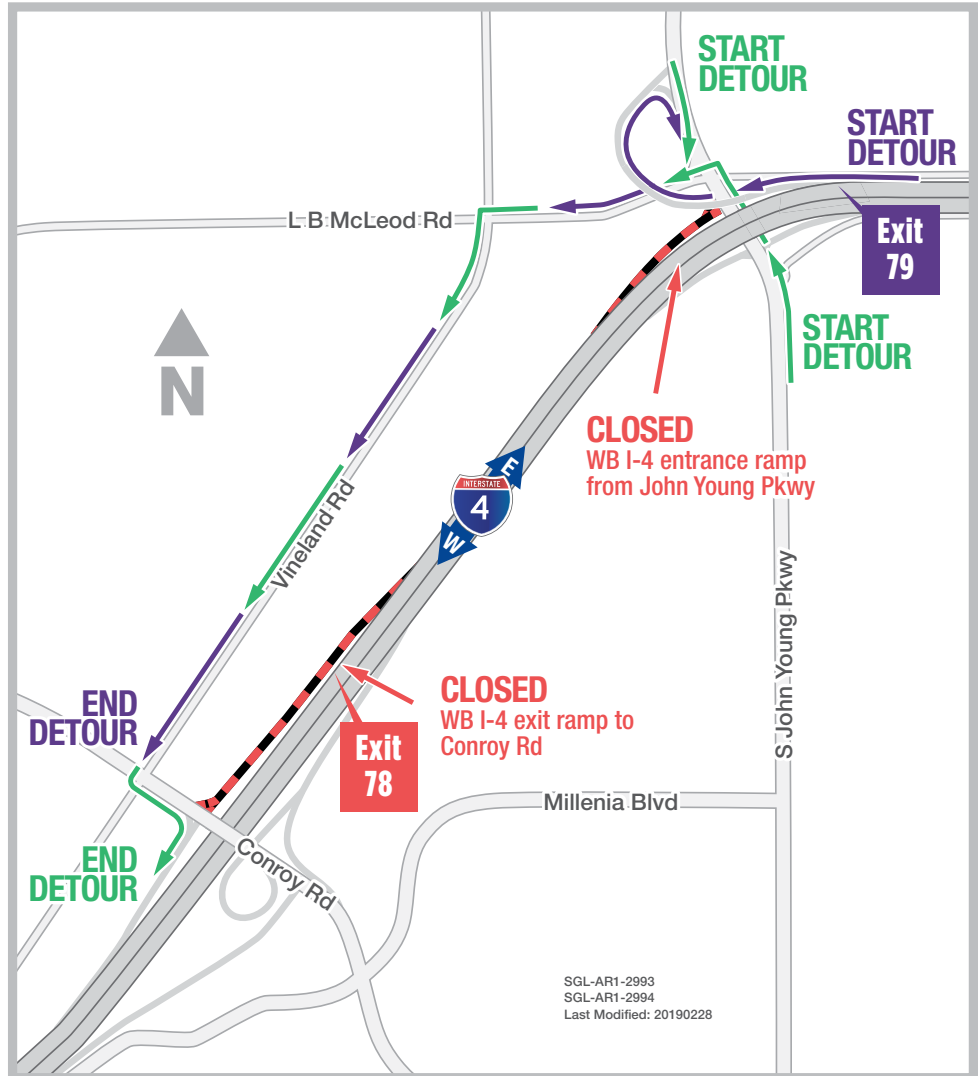
The Florida Department of Transportation will temporarily close the westbound Interstate 4 (I-4) on-ramp from John Young Parkway and the exit ramp to Conroy Road (Exit 78) from 10 p.m. on Monday, March 4, until 5 a.m. the following morning. Beginning Monday morning, a temporary two-lane ramp system will connect the two westbound I-4 ramps. See reverse side for more information.

Traveling on John Young Parkway to enter WB I-4:

- Travel west on LB McLeod Road
- Turn left onto Vineland Road
- Turn left onto Conroy Road
- Follow signage to westbound I-4 on-ramp

Traveling on WB I-4 to Conroy Road:

- Use Exit 79 to John Young Parkway
- Turn right onto John Young Parkway
- Turn right onto LB McLeod Road
- Turn left onto Vineland Road



PROJECT INFO

The \$2.3 billion I-4 Ultimate project is reconstructing 21 miles of interstate from west of Kirkman Road to east of State Road 434 in Longwood. For more information about I-4 Ultimate, contact David Parks, I-4 Ultimate Public Information Officer, at 844-ULT-INFO (844-858-4636) or DavidParks@i4Ultimate.com.

Closures subject to change. Construction progress, roadway conditions and weather may require schedule adjustments. Please check i4ultimate.com/alertsmap for the most up-to-date information.



Sign up for I-4 Construction Updates and Alerts at I4Ultimate.com
Learn about commuter options in Central Florida at reThinkYourCommute.com

