



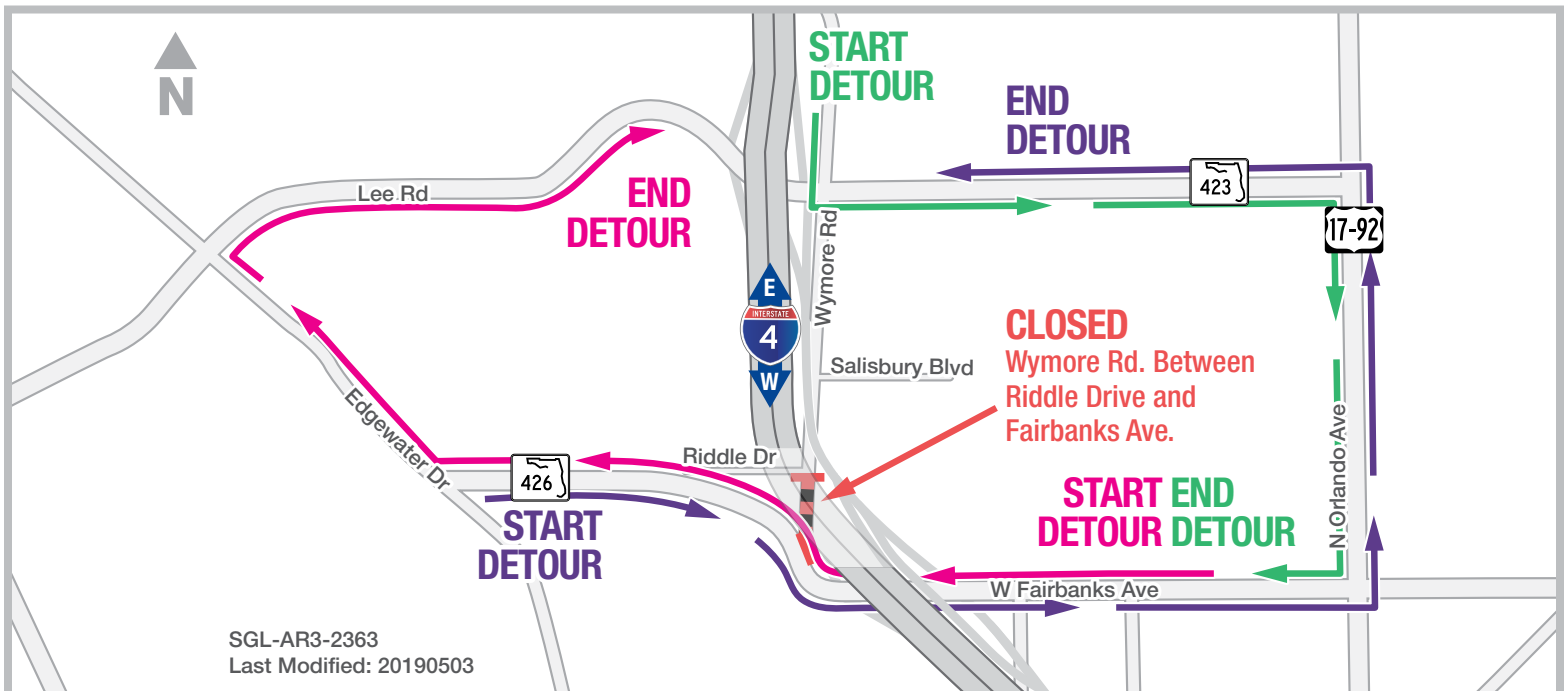
BUILDING A BETTER I-4

Stay Informed:

- » Project Hotline: 844-ULT-INFO (858-4636)
- » Sign up for email and text alerts at fdot.tips/I4Alerts
- » Follow @i4Ultimate on Twitter
- » Subscribe to our monthly newsletter at fdot.tips/I4News

WYMORE ROAD AT RIDDLE DRIVE CLOSING FOR FIVE NIGHTS

CLOSURE SCHEDULED FROM 10 PM TO 5 AM ON THE NIGHTS OF MAY 6-10



The Florida Department of Transportation is temporarily closing Wymore Road between Riddle Drive and Fairbanks Avenue from 10 p.m. to 5 a.m. on May 6-10. The closure is necessary for waterline installation.

PROJECT INFO

The \$2.3 billion I-4 Ultimate project is reconstructing 21 miles of interstate from west of Kirkman Road to east of State Road 434 in Longwood. For more information about I-4 Ultimate, contact David Parks, I-4 Ultimate Public Information Officer, at 844-ULT-INFO (844-858-4636) or DavidParks@i4Ultimate.com.

Traveling southbound on Wymore Road:

- Turn left onto Lee Road (State Road 423)
- Turn right onto Orlando Avenue (US 17-92)
- Turn right onto Fairbanks Avenue (State Road 426)

Traveling eastbound on Fairbanks Avenue to Wymore Road:

- Continue east on Fairbanks Avenue
- Turn left onto Orlando Avenue
- Turn left onto Lee Road

Traveling westbound on Fairbanks Avenue to Wymore Road:

- Continue west on Fairbanks Avenue
- Turn right onto Edgewater Drive
- Turn right onto Lee Road

Closure subject to change. Construction progress, roadway conditions and weather may require schedule adjustments. Please check i4ultimate.com/alertsmap for the most up-to-date information.



Sign up for I-4 Construction Updates and Alerts at I4Ultimate.com

Learn about design and construction on the next 40 miles of I-4 at I4Beyond.com