



BUILDING A BETTER I-4

Stay Informed:

- » Project Hotline: 844-ULT-INFO (858-4636)
- » Sign up for email and text alerts at fdot.tips/I4Alerts
- » Follow @i4Ultimate on Twitter
- » Subscribe to our monthly newsletter at fdot.tips/I4News

EB I-4 EXIT RAMP TO EB MAITLAND BLVD. CHANGING AS SOON AS THE MORNING OF JUNE 14

TEMPORARY RAMP CONFIGURATION CREATES NEW TRAFFIC PATTERN AT SANDSPUR ROAD

A temporary configuration of the eastbound Interstate 4 (I-4) ramp (Exit 90A) to eastbound Maitland Boulevard (State Road 414) will change how motorists merge with eastbound Maitland Boulevard and access Sandspur Road. The new ramp configuration will not change the exit point from I-4; however, traffic on the new ramp will merge with the travel lanes of eastbound Maitland Boulevard before the Sandspur Road access ramp. A temporary right turn lane on eastbound Maitland Boulevard will provide access to Sandspur Road. To allow crews a safe work zone to implement the temporary ramp configuration, motorists should expect a closure of the ramp from 9 p.m. on Thursday, June 13, until 5 a.m. the next morning. See reverse side for the detour route.



Ramp shift subject to change. Construction progress, roadway conditions and weather may require schedule adjustments. Please check i4ultimate.com/alertsmap for the most up-to-date information.



Sign up for I-4 Construction Updates and Alerts at I4Ultimate.com

Learn about design and construction on the next 40 miles of I-4 at I4Beyond.com



BUILDING A BETTER I-4

Stay Informed:

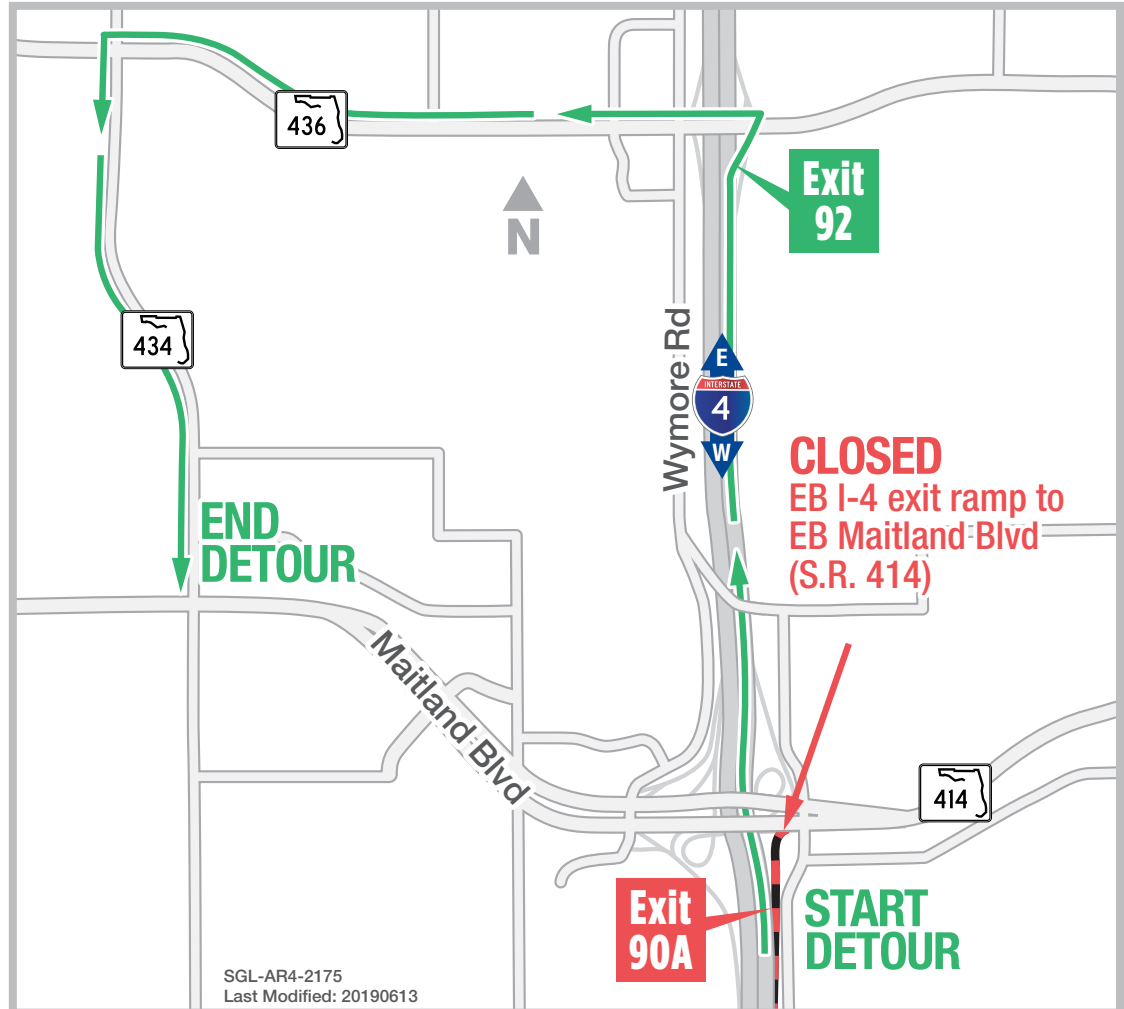
- » Project Hotline: 844-ULT-INFO (858-4636)
- » Sign up for email and text alerts at fdot.tips/I4Alerts
- » Follow @i4Ultimate on Twitter
- » Subscribe to our monthly newsletter at fdot.tips/I4News

EB I-4 EXIT RAMP TO EB MAITLAND BLVD. CLOSING NIGHT OF JUNE 13 FOR RAMP SHIFT

To provide a safe work zone for I-4 Ultimate crews to put in place a temporary ramp configuration, the eastbound Interstate 4 (I-4) exit ramp to eastbound Maitland Boulevard (State Road 414) is closing from 9 p.m. Thursday, June 13, until 5 a.m. the next morning. See reverse side for the new temporary ramp configuration that is scheduled to open as soon as the morning of Friday, June 14.

Traveling on eastbound I-4 to eastbound Maitland Boulevard:

- Use Exit 92 to State Road (S.R.) 436
- Turn left onto S.R. 436
- Turn left onto S.R. 434
- Turn left onto eastbound Maitland Boulevard



PROJECT INFO

The \$2.3 billion I-4 Ultimate project is reconstructing 21 miles of interstate from west of Kirkman Road to east of State Road 434 in Longwood. For more information about I-4 Ultimate, contact David Parks, I-4 Ultimate Community Outreach Specialist, at 844-ULT-INFO (844-858-4636) or DavidParks@i4Ultimate.com.

Closure subject to change. Construction progress, roadway conditions and weather may require schedule adjustments. Please check i4ultimate.com/alertsmap for the most up-to-date information.



Sign up for I-4 Construction Updates and Alerts at I4Ultimate.com

Learn about design and construction on the next 40 miles of I-4 at I4Beyond.com