



# BUILDING A BETTER I-4

## Stay Informed:

- » Project Hotline: 844-ULT-INFO (858-4636)
- » Sign up for email and text alerts at [fdot.tips/I4Alerts](mailto:fdot.tips/I4Alerts)
- » Follow @i4Ultimate on Twitter
- » Subscribe to our monthly newsletter at [fdot.tips/I4News](mailto:fdot.tips/I4News)

## WB EXIT RAMP TO LEE ROAD SHIFTING TO NEW LOCATION

The westbound Interstate 4 (I-4) exit ramp to Lee Road (State Road 423) is shifting back approximately three-quarters of a mile as soon as Sunday, June 30. Continuous closures of the westbound outside lane on Lee Road under I-4 and the westbound I-4 exit ramp are necessary to accommodate the shift. See reverse for detour routes and more information.



### PROJECT INFO

The \$2.3 billion I-4 Ultimate project is reconstructing 21 miles of interstate from west of Kirkman Road to east of State Road 434 in Longwood. For more information about I-4 Ultimate, contact David Parks, I-4 Ultimate Community Outreach Specialist, at 844-ULT-INFO (844-858-4636) or [DavidParks@i4Ultimate.com](mailto:DavidParks@i4Ultimate.com).

Traffic shift subject to change. Construction progress, roadway conditions and weather may require schedule adjustments. Please check [i4ultimate.com/alertsmap](http://i4ultimate.com/alertsmap) for the most up-to-date information.



Sign up for I-4 Construction Updates and Alerts at [I4Ultimate.com](http://I4Ultimate.com)

Learn about design and construction on the next 40 miles of I-4 at [I4Beyond.com](http://I4Beyond.com)



# BUILDING A BETTER I-4

## Stay Informed:

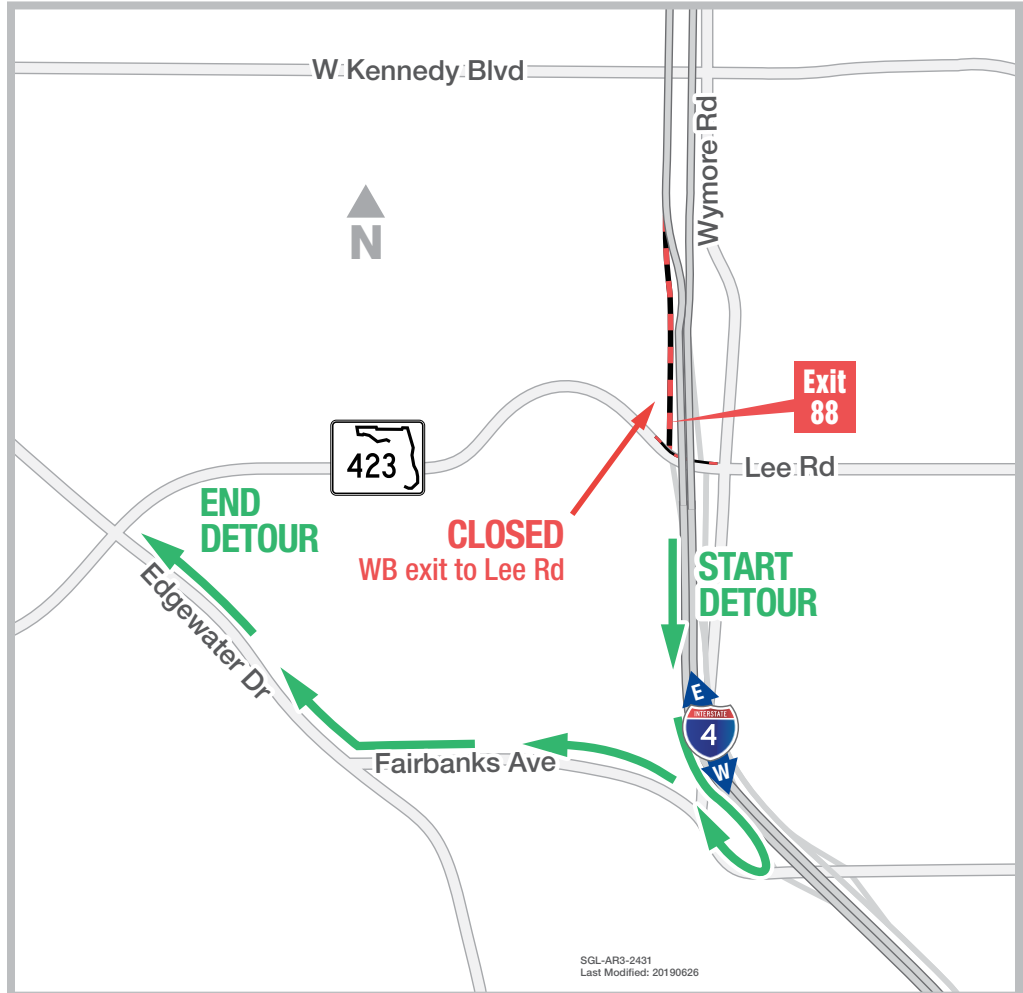
- » Project Hotline: 844-ULT-INFO (858-4636)
- » Sign up for email and text alerts at [fdot.tips/I4Alerts](https://fdot.tips/I4Alerts)
- » Follow @i4Ultimate on Twitter
- » Subscribe to our monthly newsletter at [fdot.tips/I4News](https://fdot.tips/I4News)

## WEEKEND CLOSURE OF WB LANE ON LEE ROAD AND WB I-4 EXIT RAMP

The Florida Department of Transportation (FDOT) is closing the westbound outside lane on Lee Road (State Road 423) under Interstate 4 (I-4) and the westbound I-4 exit ramp to Lee Road as soon as 10 p.m. on Friday, June 28, and reopening at 5 a.m. on Monday, July 1. The closures are necessary to accommodate a shift of the westbound I-4 exit ramp to Lee Road. See reverse for more information.

### Traveling westbound on I-4 to Lee Road:

- Continue to the westbound I-4 exit to Fairbanks Avenue (State Road 426)
- Turn right onto Fairbanks Avenue
- Turn right onto Edgewater Drive (State Road 424)
- Continue to Lee Road (State Road 423)



### PROJECT INFO

The \$2.3 billion I-4 Ultimate project is reconstructing 21 miles of interstate from west of Kirkman Road to east of State Road 434 in Longwood. For more information about I-4 Ultimate, contact David Parks, I-4 Ultimate Community Outreach Specialist, at 844-ULT-INFO (844-858-4636) or [DavidParks@i4Ultimate.com](mailto:DavidParks@i4Ultimate.com).

Closure subject to change. Construction progress, roadway conditions and weather may require schedule adjustments. Please check [i4ultimate.com/alertsmap](https://i4ultimate.com/alertsmap) for the most up-to-date information.



Sign up for I-4 Construction Updates and Alerts at [I4Ultimate.com](https://I4Ultimate.com)

Learn about design and construction on the next 40 miles of I-4 at [I4Beyond.com](https://I4Beyond.com)