



BUILDING A BETTER I-4

Stay Informed:

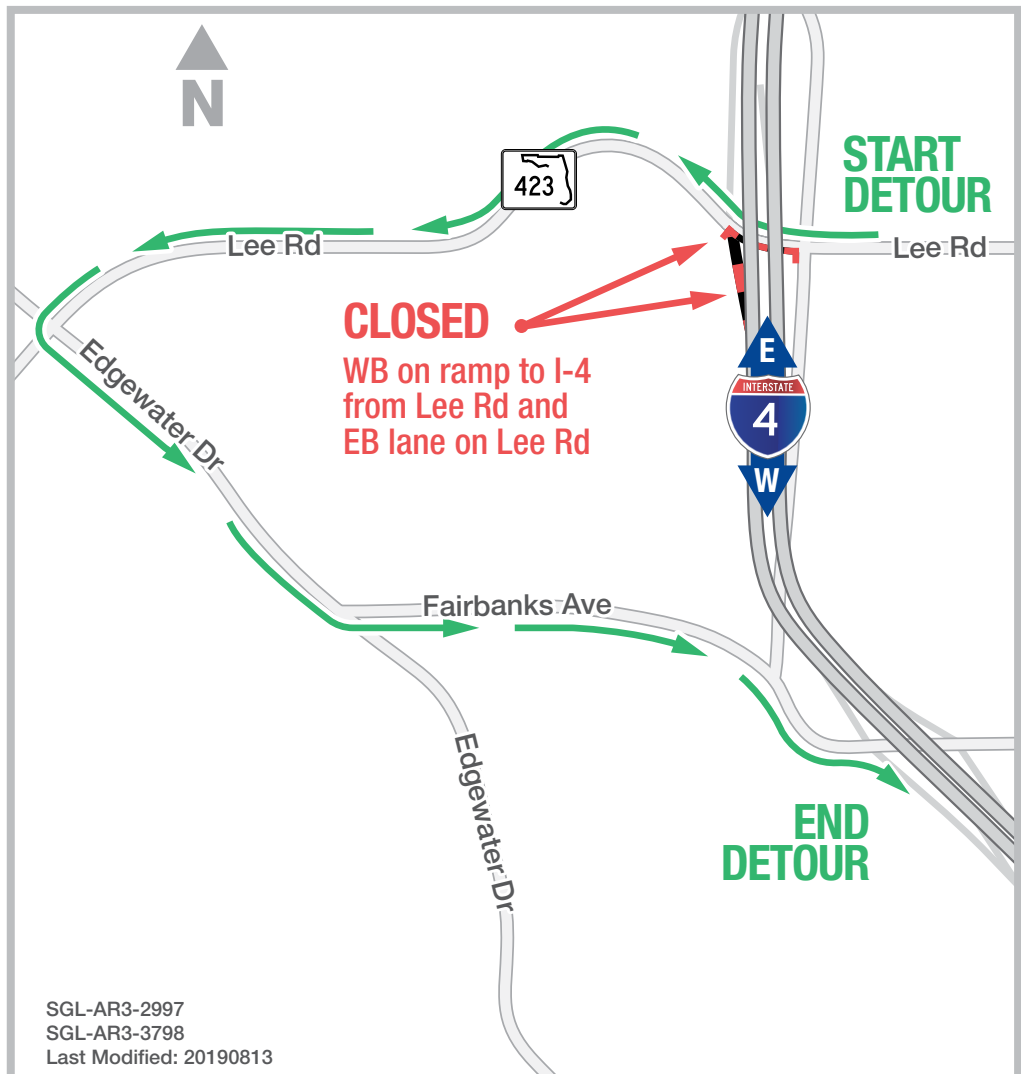
- » Project Hotline: 844-ULT-INFO (858-4636)
- » Sign up for email and text alerts at fdot.tips/I4Alerts
- » Follow @i4Ultimate on Twitter
- » Subscribe to our monthly newsletter at fdot.tips/I4News

EB LANE ON LEE RD AND WB ON RAMP TO I-4 CLOSING WEEKEND OF AUGUST 16

The Florida Department of Transportation (FDOT) is closing the right lane on eastbound Lee Road (State Road 423) under Interstate 4 (I-4) and the westbound I-4 entrance ramp from Lee Road during the weekend of August 16. The continuous closures are scheduled to begin as soon as 10 p.m. on Friday, August 16, and end at 5 a.m. on Monday, August 19. The closures are necessary to accommodate a shift of the westbound I-4 entrance ramp.

Entering westbound I-4 from Lee Road (State Road 423):

- Travel westbound on Lee Road (State Road 423)
- Turn left onto Edgewater Drive
- Turn left onto Fairbanks Avenue
- Follow signs to westbound I-4



PROJECT INFO

The \$2.3 billion I-4 Ultimate project is reconstructing 21 miles of interstate from west of Kirkman Road to east of State Road 434 in Longwood. For more information about I-4 Ultimate, contact David Parks, I-4 Ultimate Community Outreach Specialist, at 844-ULT-INFO (844-858-4636) or DavidParks@i4Ultimate.com.

Closures subject to change. Construction progress, roadway conditions and weather may require schedule adjustments. Please check i4ultimate.com/alertsmap for the most up-to-date information.



Sign up for I-4 Construction Updates and Alerts at I4Ultimate.com

Learn about design and construction on the next 40 miles of I-4 at I4Beyond.com