



BUILDING A BETTER I-4

Stay Informed:

- » Project Hotline: 844-ULT-INFO (858-4636)
- » Sign up for email and text alerts at fdot.tips/I4Alerts
- » Follow @i4Ultimate on Twitter
- » Subscribe to our monthly newsletter at fdot.tips/I4News

NB KIRKMAN ROAD AND WB I-4 OFF RAMP CLOSING FOR ONE NIGHT

CLOSURE SCHEDULED TO BEGIN AS SOON AS 10 PM ON SEPTEMBER 9 AND REOPEN AT 5 AM THE NEXT MORNING

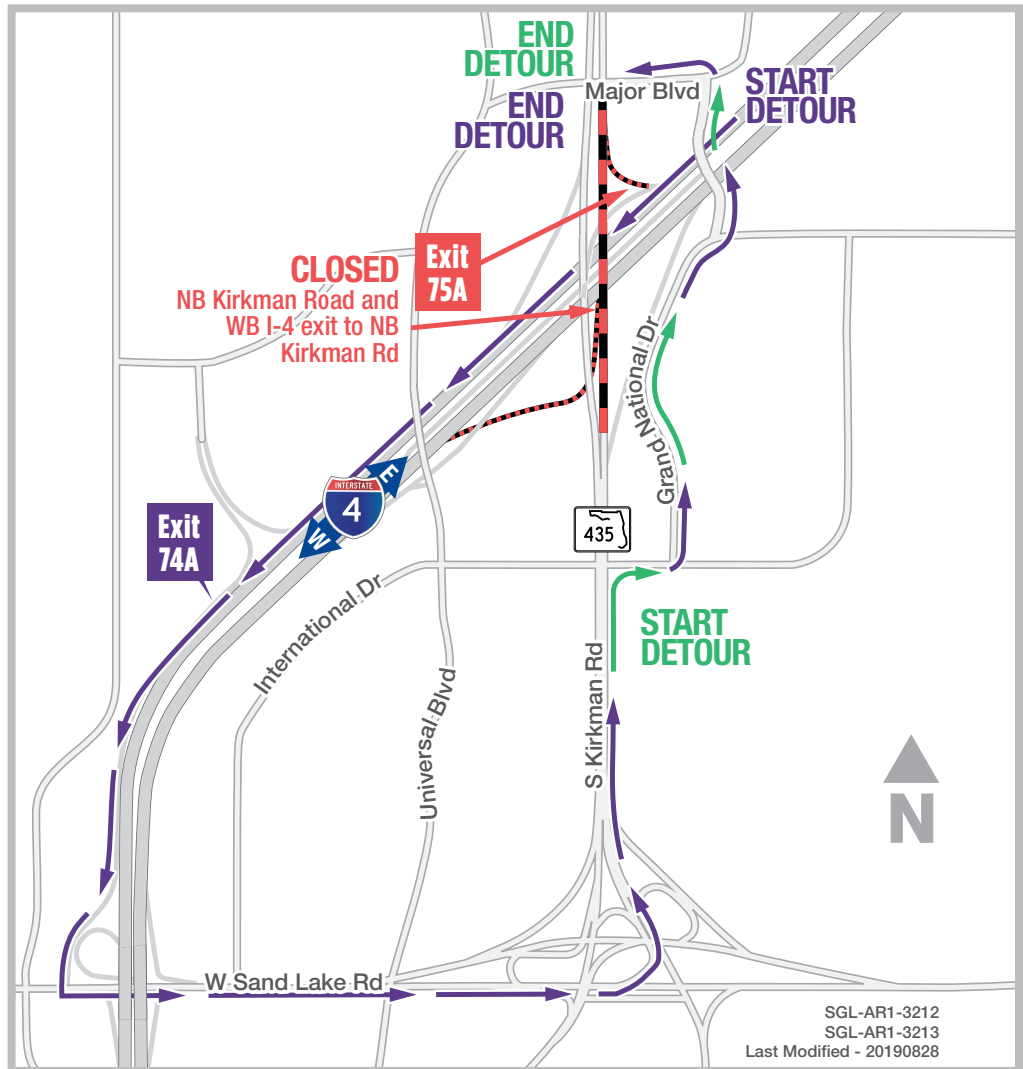
The Florida Department of Transportation (FDOT) is temporarily closing northbound Kirkman Road from International Drive to Vineland Road. The closure is scheduled to begin as soon as 10 p.m. on Monday, September 9, and reopen at 5 a.m. the following morning. The closure is necessary to facilitate a traffic shift.

Traveling northbound on Kirkman Road:

- Turn right onto International Drive
- Turn left onto Grand National Drive
- Turn left onto Major Boulevard
- Turn right onto Kirkman Road

Exiting westbound I-4 to northbound Kirkman Road:

- Continue on westbound I-4
- Take the westbound I-4 exit to Sand Lake Road
- Turn left onto Sand Lake Road
- Take the exit on the left to northbound Kirkman Road
- Turn right onto International Drive
- Turn left onto Grand National Drive
- Turn left onto Major Boulevard
- Turn right onto Kirkman Road



SGL-AR1-3212
SGL-AR1-3213
Last Modified - 20190828

PROJECT INFO

The \$2.3 billion I-4 Ultimate project is reconstructing 21 miles of interstate from west of Kirkman Road to east of State Road 434 in Longwood. For more information about I-4 Ultimate, contact David Parks, I-4 Ultimate Community Outreach Specialist, at 844-ULT-INFO (844-858-4636) or DavidParks@i4Ultimate.com.



Sign up for I-4 Construction Updates and Alerts at I4Ultimate.com

Learn about design and construction on the next 40 miles of I-4 at I4Beyond.com