



BUILDING A BETTER I-4

Stay Informed:

- » Project Hotline: 844-ULT-INFO (858-4636)
- » Sign up for email and text alerts at fdot.tips/I4Alerts
- » Follow @i4Ultimate on Twitter
- » Subscribe to our monthly newsletter at fdot.tips/I4News

SOUTHBOUND KIRKMAN ROAD OVER I-4 CLOSING FOR ONE NIGHT

CLOSURES SCHEDULED TO BEGIN AS SOON AS 10 PM ON SEPTEMBER 17

The Florida Department of Transportation (FDOT) is temporarily closing southbound Kirkman Road (State Road 435) from Major Boulevard to International Drive and the westbound Interstate 4 (I-4) exit to southbound Kirkman Road as soon as 10 p.m. on Tuesday, September 17, and reopening at 6 a.m. on Wednesday, September 18. The closure is necessary for pavement marking and to accommodate a traffic shift. See reverse side for more information about closures on northbound Kirkman Road.

Traveling on southbound Kirkman Road:

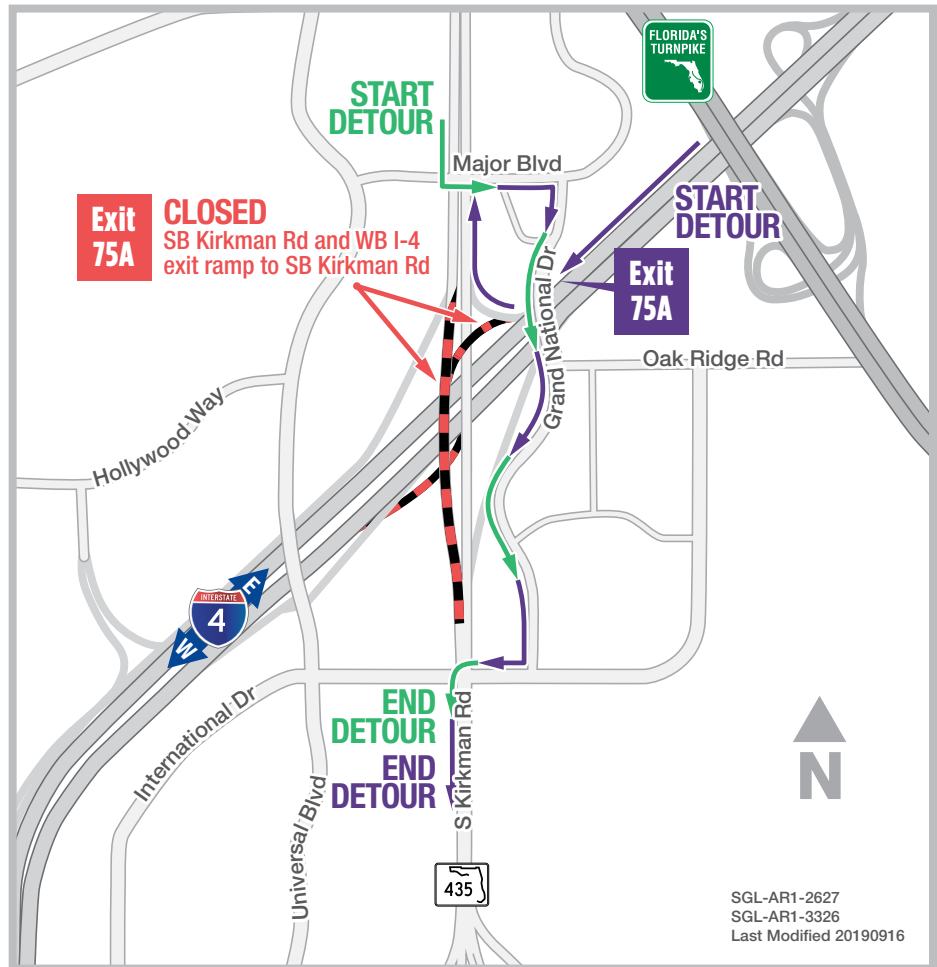
- Turn left onto Major Boulevard
- Turn right onto Grand National Drive
- Turn right onto International Drive
- Turn left onto Kirkman Road

Exiting westbound I-4 to southbound Kirkman Road:

- Take the exit to northbound Kirkman Road
- Turn right onto Major Boulevard
- Turn right onto Grand National Drive
- Turn right onto International Drive
- Turn left onto Kirkman Road

PROJECT INFO

The \$2.3 billion I-4 Ultimate project is reconstructing 21 miles of interstate from west of Kirkman Road to east of State Road 434 in Longwood. For more information about I-4 Ultimate, contact David Parks, I-4 Ultimate Community Outreach Specialist, at 844-ULT-INFO (844-858-4636) or DavidParks@i4Ultimate.com.



Closure subject to change. Construction progress, roadway conditions and weather may require schedule adjustments. Please check i4ultimate.com/alertsmap for the most up-to-date information.



Sign up for I-4 Construction Updates and Alerts at I4Ultimate.com

Learn about design and construction on the next 40 miles of I-4 at I4Beyond.com



BUILDING A BETTER I-4

Stay Informed:

- » Project Hotline: 844-ULT-INFO (858-4636)
- » Sign up for email and text alerts at fdot.tips/I4Alerts
- » Follow @i4Ultimate on Twitter
- » Subscribe to our monthly newsletter at fdot.tips/I4News

NORTHBOUND KIRKMAN ROAD OVER I-4 CLOSING FOR ONE NIGHT

CLOSURES SCHEDULED TO BEGIN AS SOON AS 10 PM ON SEPTEMBER 19

The Florida Department of Transportation (FDOT) is temporarily closing northbound Kirkman Road (State Road 435) from International Drive to Major Boulevard and the westbound Interstate 4 (I-4) exit to northbound Kirkman Road as soon as 10 p.m. on Thursday, September 19, and reopening at 6 a.m. on Friday, September 20. The closure is necessary for pavement marking and to accommodate a traffic shift. See reverse side for more information about closures on southbound Kirkman Road.

Traveling northbound on Kirkman Road:

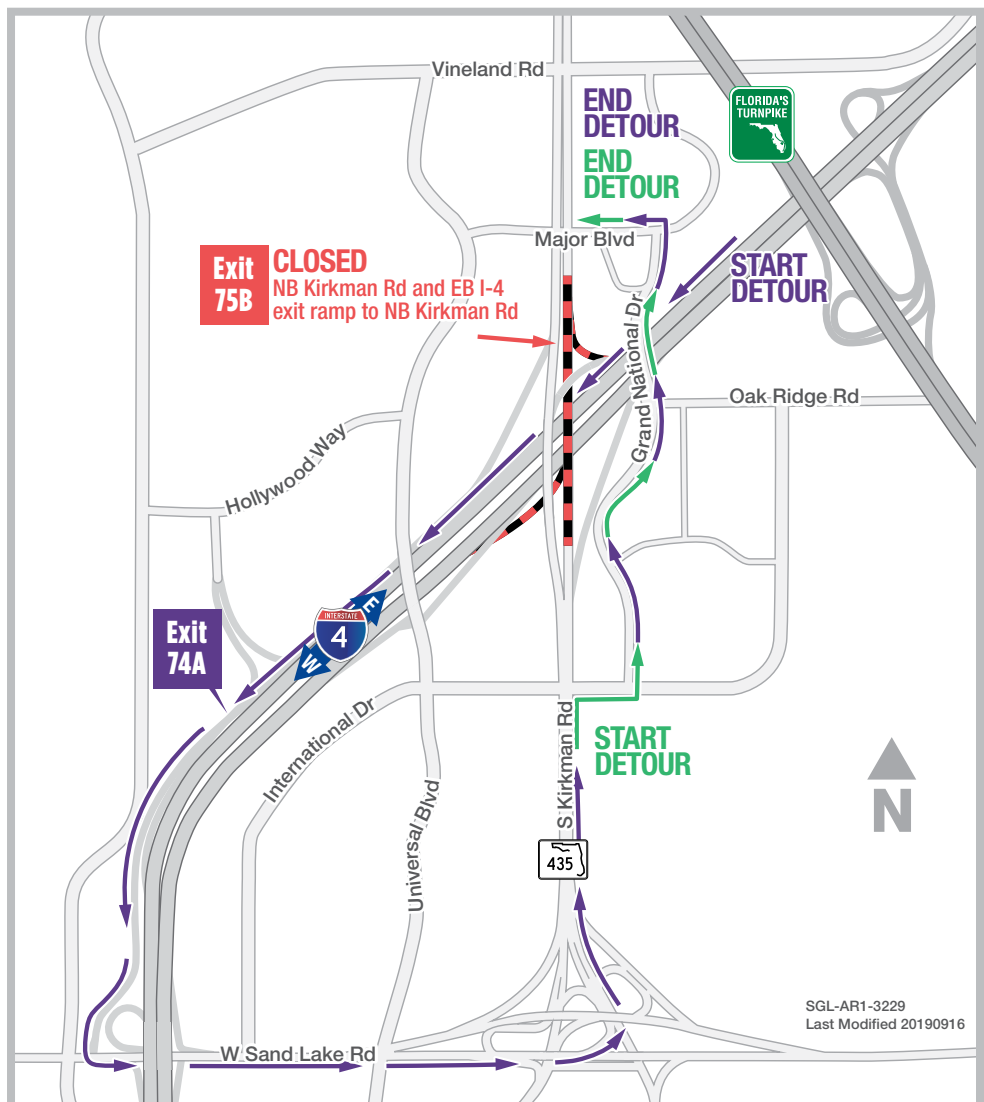
- Turn right onto International Drive
- Turn left onto Grand National Drive
- Turn left onto Major Boulevard
- Turn right onto Kirkman Road

Exiting westbound I-4 to northbound Kirkman Road:

- Continue on westbound I-4
- Take the westbound I-4 exit to Sand Lake Road
- Turn left onto Sand Lake Road
- Take the exit on the left to northbound Kirkman Road
- Turn right onto International Drive
- Turn left onto Grand National Drive
- Turn left onto Major Boulevard
- Turn right onto Kirkman Road

PROJECT INFO

The \$2.3 billion I-4 Ultimate project is reconstructing 21 miles of interstate from west of Kirkman Road to east of State Road 434 in Longwood. For more information about I-4 Ultimate, contact David Parks, I-4 Ultimate Community Outreach Specialist, at 844-ULT-INFO (844-858-4636) or DavidParks@i4Ultimate.com.



Closure subject to change. Construction progress, roadway conditions and weather may require schedule adjustments. Please check i4ultimate.com/alertsmap for the most up-to-date information.



Sign up for I-4 Construction Updates and Alerts at I4Ultimate.com

Learn about design and construction on the next 40 miles of I-4 at I4Beyond.com