



BUILDING A BETTER I-4

Stay Informed:

- » Project Hotline: 844-ULT-INFO (858-4636)
- » Sign up for email and text alerts at fdot.tips/I4Alerts
- » Follow @i4Ultimate on Twitter
- » Subscribe to our monthly newsletter at fdot.tips/I4News

EB I-4 EXIT RAMPS TO KIRKMAN ROAD SHIFTING TO PERMANENT CONFIGURATION

EASTBOUND INTERSTATE 4 (I-4) EXIT TO GRAND NATIONAL DRIVE CLOSING TO ACCOMMODATE SHIFT

The Florida Department of Transportation (FDOT) is shifting the eastbound Interstate 4 (I-4) exit ramp (Exit 75B) to northbound Kirkman Road (State Road 435) into its permanent configuration as soon as Wednesday, October 30. A new traffic movement also will be introduced as part of this shift. An I-4 exit ramp to southbound Kirkman Road also is opening, which provides motorists with a brand new access point to southbound Kirkman Road.

The left-hand eastbound I-4 exit ramp to Grand National Drive, which was used as a temporary ramp to access Kirkman Road, will close until project completion when it will be used as an exit ramp for the eastbound I-4 express lanes. Motorists now will use the new exit on the right to travel to northbound Kirkman Road. The eastbound entrance and exit ramps to Universal Boulevard also will close to accommodate this shift. See reverse side for more information.



PROJECT INFO

The \$2.3 billion I-4 Ultimate project is reconstructing 21 miles of interstate from west of Kirkman Road to east of State Road 434 in Longwood. For more information about I-4 Ultimate, contact David Parks, I-4 Ultimate Community Outreach Specialist, at 844-ULT-INFO (844-858-4636) or DavidParks@i4Ultimate.com.

Shift subject to change. Construction progress, roadway conditions and weather may require schedule adjustments. Please check i4ultimate.com/alertsmap for the most up-to-date information.



Sign up for I-4 Construction Updates and Alerts at I4Ultimate.com

Learn about design and construction on the next 40 miles of I-4 at I4Beyond.com



BUILDING A BETTER I-4

Stay Informed:

- » Project Hotline: 844-ULT-INFO (858-4636)
- » Sign up for email and text alerts at fdot.tips/I4Alerts
- » Follow @i4Ultimate on Twitter
- » Subscribe to our monthly newsletter at fdot.tips/I4News

UNIVERSAL BLVD. RAMPS CLOSING THE NIGHT OF OCTOBER 29

CLOSURES SCHEDULED TO OCCUR BETWEEN 10 PM AND 5 AM

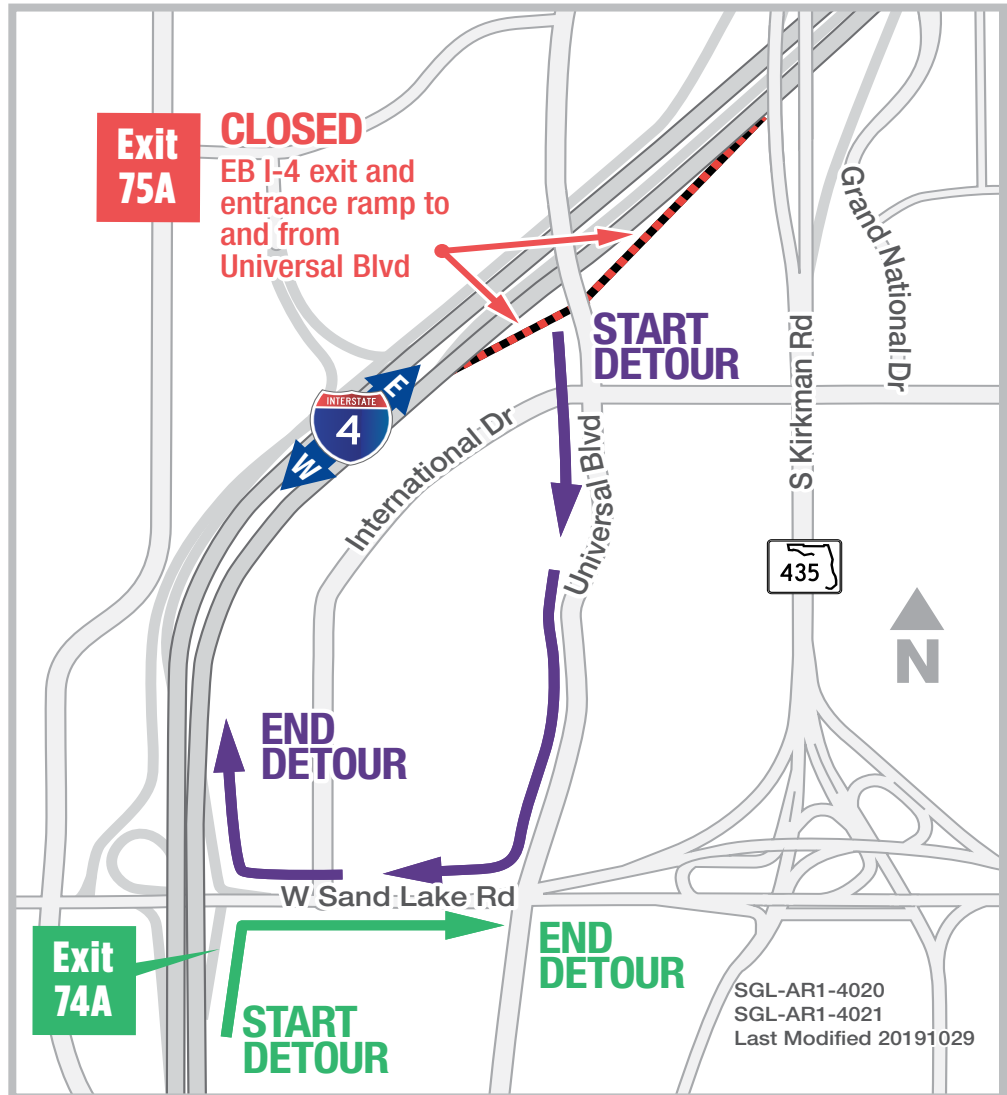
The Florida Department of Transportation is temporarily closing the eastbound exit ramp to and the eastbound entrance from Universal Boulevard between 10 p.m. and 5 a.m. the night of Tuesday, October 29. The closures are necessary to accommodate a traffic shift. The eastbound exit to northbound Kirkman Road (State Road 435) is closing until project completion as part of this shift. See reverse side for more details.

Traveling on eastbound I-4 to Universal Boulevard

- Take the eastbound I-4 exit to Sand Lake Road (State Road 482)
- Continue to Universal Boulevard

Entering I-4 from Universal Boulevard

- Continue on Universal Boulevard
- Turn left onto International Drive
- Turn left onto Kirkman Road
- Turn right onto Vineland Road
- Turn right onto Conroy Road
- Follow signs to eastbound I-4



PROJECT INFO

The \$2.3 billion I-4 Ultimate project is reconstructing 21 miles of interstate from west of Kirkman Road to east of State Road 434 in Longwood. For more information about I-4 Ultimate, contact David Parks, I-4 Ultimate Community Outreach Specialist, at 844-ULT-INFO (844-858-4636) or DavidParks@i4Ultimate.com.



Sign up for I-4 Construction Updates and Alerts at I4Ultimate.com

Learn about design and construction on the next 40 miles of I-4 at I4Beyond.com