



BUILDING A BETTER I-4

Stay Informed:

- » Project Hotline: 844-ULT-INFO (858-4636)
- » Sign up for email and text alerts at fdot.tips/I4Alerts
- » Follow @i4Ultimate on Twitter
- » Subscribe to our monthly newsletter at fdot.tips/I4News

NEW CONFIGURATION OF EB I-4 EXIT TO MAITLAND BOULEVARD

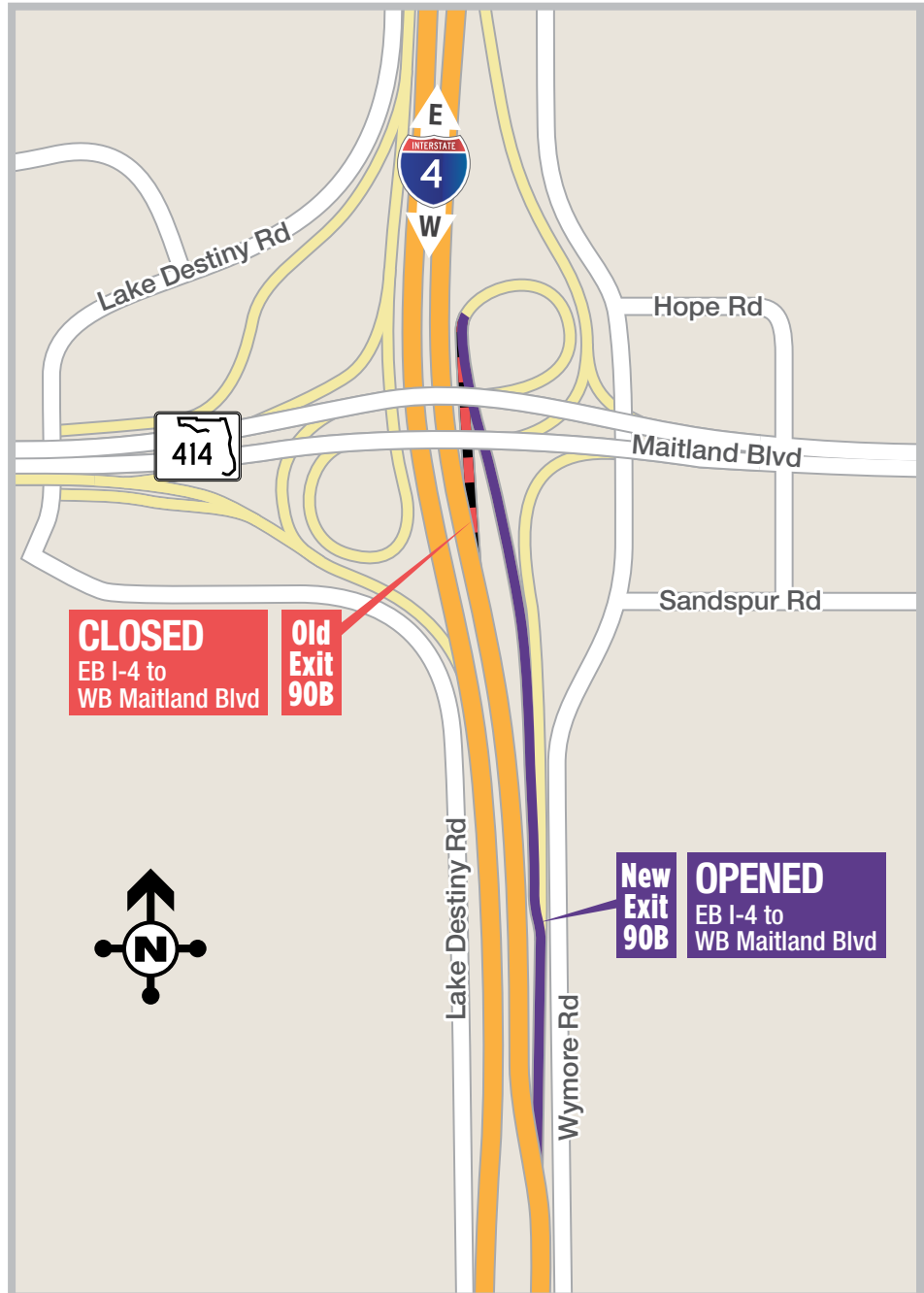
The Florida Department of Transportation (FDOT) is combining the eastbound Interstate 4 (I-4) exit to eastbound and westbound Maitland Boulevard (State Road 414).

The combination is in effect as of Wednesday, November 13.

The exit point from eastbound I-4 to westbound Maitland Boulevard (90B) now begins approximately a quarter of a mile sooner, coupled with the exit point to eastbound Maitland Boulevard (90A). The new combined eastbound exit ramp splits to provide access to both directions of Maitland Boulevard.

The eastbound I-4 exit is now in its final configuration and access to eastbound and westbound Maitland Boulevard will remain combined on the same ramp.

Additional shifts of I-4 ramps at the Maitland interchange will occur. Motorists are advised to maintain a safe speed when driving through the work zone.



PROJECT INFO

The \$2.3 billion I-4 Ultimate project is reconstructing 21 miles of interstate from west of Kirkman Road to east of State Road 434 in Longwood. For more information about I-4 Ultimate, contact David Parks, I-4 Ultimate Public Communications Coordinator, at 844-ULT-INFO (844-858-4636) or DavidParks@i4Ultimate.com.



Sign up for I-4 Construction Updates and Alerts at I4Ultimate.com

Learn about design and construction on the next 40 miles of I-4 at I4Beyond.com