



BUILDING A BETTER I-4

Stay Informed:

- » Project Hotline: 844-ULT-INFO (858-4636)
- » Sign up for email and text alerts at fdot.tips/I4Alerts
- » Follow @i4Ultimate on Twitter
- » Subscribe to our monthly newsletter at fdot.tips/I4News

STATE ROAD 436 AND INTERSTATE 4 INTERCHANGE CLOSING NIGHTLY FOR ONE WEEK

RAMP AND ROAD CLOSURES SCHEDULED TO OCCUR BETWEEN 10 PM AND 5 AM FEBRUARY 3-10

The Florida Department of Transportation (FDOT) is temporarily closing the State Road (S.R.) 436 and Interstate 4 (I-4) interchange, detouring all I-4 and S.R. 436 traffic nightly for one week. The closures are necessary to accommodate bridge work. The closures are scheduled to occur between 10 p.m. and 5 a.m. February 3 through February 10.

Motorists traveling on I-4 will need to exit at S.R. 436 and cross at S.R. 436 to continue driving on I-4. Law enforcement officers will be present during this operation to manage traffic through the interchange.

Access to I-4 from S.R. 436 will be restricted during the closure.

- See page 2 for westbound I-4 detours
- See page 3 for S.R. 436 east of I-4 detour
- See page 4 for S.R. 436 west of I-4 detour

Continue on eastbound I-4:

- Use Exit 92 to S.R. 436
- Continue through the intersection to cross S.R. 436 and re-enter eastbound I-4
- Right turns from eastbound I-4 to eastbound 436 will be permitted
- For westbound, see map 2

From east of the Interstate to eastbound I-4:

- Turn north onto Ronald Reagan Boulevard
- Turn west onto S.R. 434
- Follow signs to eastbound I-4

From west of the Interstate to eastbound I-4:

- Turn north onto S.R. 434
- Follow signs to eastbound I-4

No vehicles will be permitted to cross over I-4 on S.R. 436 during the closures

MAP 1 — TRAVELING TO EASTBOUND I-4



Sign up for I-4 Construction Updates and Alerts at I4Ultimate.com

Learn about design and construction on the next 40 miles of I-4 at I4Beyond.com



BUILDING A BETTER I-4

Stay Informed:

- » Project Hotline: 844-ULT-INFO (858-4636)
- » Sign up for email and text alerts at fdot.tips/I4Alerts
- » Follow @i4Ultimate on Twitter
- » Subscribe to our monthly newsletter at fdot.tips/I4News

STATE ROAD 436 AND INTERSTATE 4 INTERCHANGE CLOSING NIGHTLY FOR ONE WEEK

RAMP AND ROAD CLOSURES SCHEDULED TO OCCUR BETWEEN 10 PM AND 5 AM FEBRUARY 3-10

The Florida Department of Transportation (FDOT) is temporarily closing the State Road (S.R.) 436 and Interstate 4 (I-4) interchange, detouring all I-4 and S.R. 436 traffic nightly for one week. The closures are necessary to accommodate bridge work.

The closures are scheduled to occur between 10 p.m. and 5 a.m. February 3 through February 10.

Motorists traveling on I-4 will need to exit at S.R. 436 and cross at S.R. 436 to continue driving on I-4. Law enforcement officers will be present during this operation to manage traffic through the interchange.

Access to I-4 from S.R. 436 will be restricted during the closure.

- Please see page 1 for eastbound I-4 detours
- Please see page 3 for S.R. 436 east of I-4 detour
- Please see page 4 for S.R. 436 west of I-4 detour

Continue on westbound I-4:

- Use Exit 92 to S.R. 436
- Continue through the Intersection to cross S.R. 436 and re-enter westbound I-4
- Right turns from westbound I-4 to westbound 436 will be permitted
- For eastbound, see map 1

From west of the Interstate to westbound I-4:

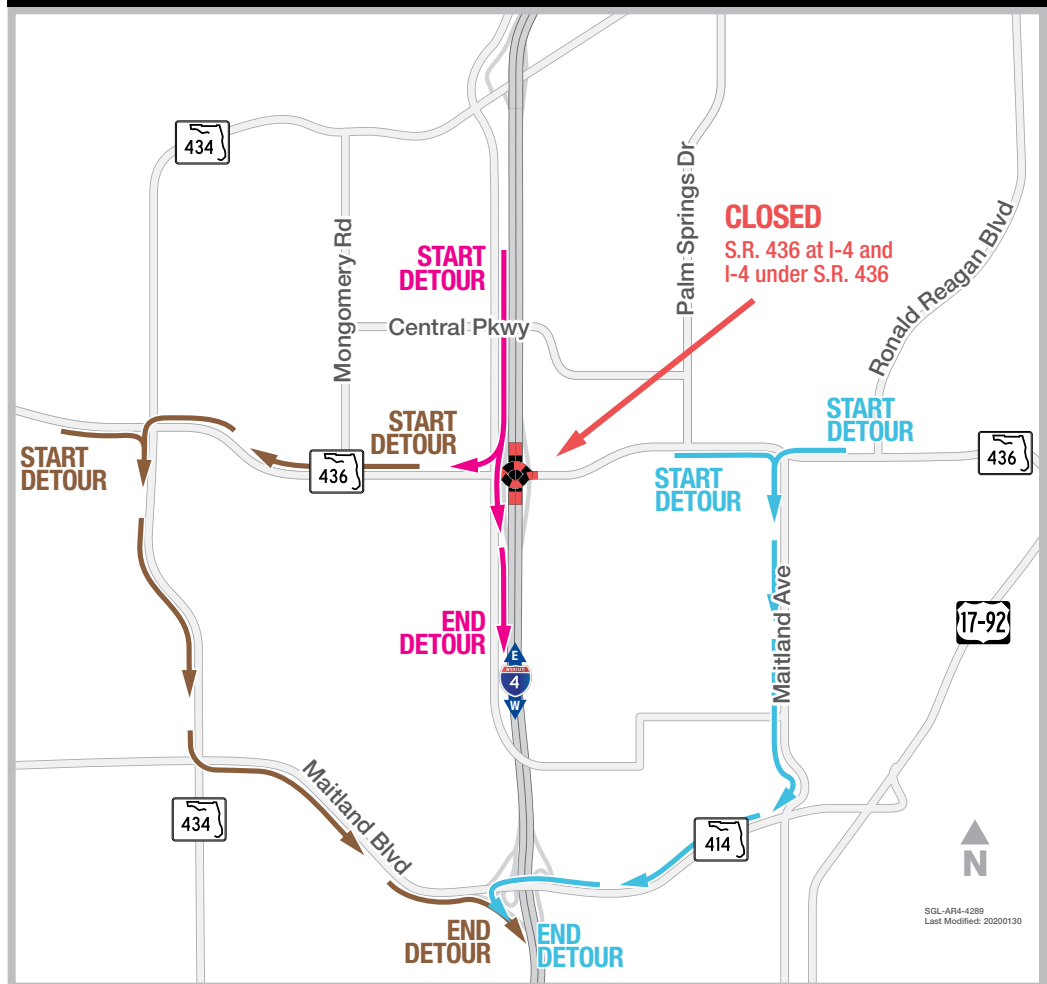
- Turn south onto S.R. 434
- Turn east onto Maitland Boulevard (S.R. 414)
- Follow signs to westbound I-4

From east of the Interstate to westbound I-4:

- Turn south on Maitland Avenue
- Turn west on Maitland Boulevard
- Follow signs to westbound I-4

No vehicles will be permitted to cross over I-4 on S.R. 436 during the closures

MAP 2 — TRAVELING TO WESTBOUND I-4



Sign up for I-4 Construction Updates and Alerts at I4Ultimate.com

Learn about design and construction on the next 40 miles of I-4 at I4Beyond.com



BUILDING A BETTER I-4

Stay Informed:

- » Project Hotline: 844-ULT-INFO (858-4636)
- » Sign up for email and text alerts at fdot.tips/I4Alerts
- » Follow @i4Ultimate on Twitter
- » Subscribe to our monthly newsletter at fdot.tips/I4News

STATE ROAD 436 AND INTERSTATE 4 INTERCHANGE CLOSING NIGHTLY FOR ONE WEEK

RAMP AND ROAD CLOSURES SCHEDULED TO OCCUR BETWEEN 10 PM AND 5 AM FEBRUARY 3-10

The Florida Department of Transportation (FDOT) is temporarily closing the State Road (S.R.) 436 and Interstate 4 (I-4) interchange, detouring all I-4 and S.R. 436 traffic nightly for one week. The closures are necessary to accommodate bridge work. The closures are scheduled to occur between 10 p.m. and 5 a.m. February 3 through February 10.

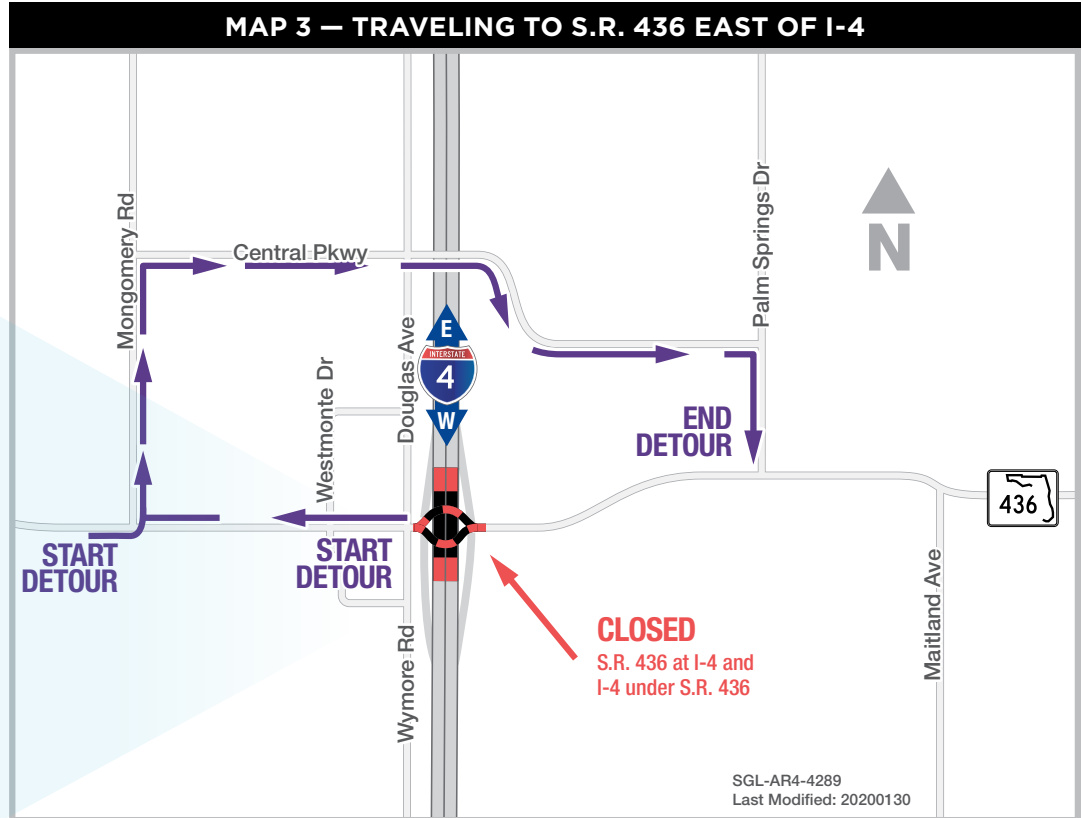
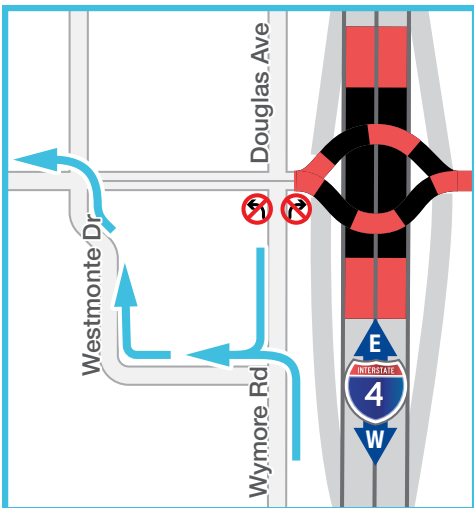
Motorists traveling on I-4 will need to exit at S.R. 436 and cross at S.R. 436 to continue driving on I-4. Law enforcement officers will be present during this operation to manage traffic through the interchange.

Access to I-4 from S.R. 436 will be restricted during the closure.

- Please see page 1 for eastbound I-4 detours
- Please see page 2 for westbound I-4 detours
- Please see page 4 for S.R. 436 west of I-4 detour

From S.R. 436 west of I-4 traveling to east of I-4:

- Turn north onto Montgomery Road
- Turn east onto Central Parkway
- Turn south onto Palm Springs Drive
- Continue to S.R. 436
- For westbound, see map 4



SGL-AR4-4289
Last Modified: 20200130

No vehicles will be permitted to cross over I-4 on S.R. 436 during the closures

PROJECT INFO

The \$2.3 billion I-4 Ultimate project is reconstructing 21 miles of interstate from west of Kirkman Road to east of State Road 434 in Longwood. For more information about I-4 Ultimate, contact David Parks, I-4 Ultimate Community Outreach Specialist, at 844-ULT-INFO (844-858-4636) or DavidParks@i4Ultimate.com.



Sign up for I-4 Construction Updates and Alerts at I4Ultimate.com

Learn about design and construction on the next 40 miles of I-4 at I4Beyond.com



BUILDING A BETTER I-4

Stay Informed:

- » Project Hotline: 844-ULT-INFO (858-4636)
- » Sign up for email and text alerts at fdot.tips/I4Alerts
- » Follow @i4Ultimate on Twitter
- » Subscribe to our monthly newsletter at fdot.tips/I4News

STATE ROAD 436 AND INTERSTATE 4 INTERCHANGE CLOSING NIGHTLY FOR ONE WEEK

RAMP AND ROAD CLOSURES SCHEDULED TO OCCUR BETWEEN 10 PM AND 5 AM FEBRUARY 3-10

The Florida Department of Transportation (FDOT) is temporarily closing the State Road (S.R.) 436 and Interstate 4 (I-4) interchange, detouring all I-4 and S.R. 436 traffic nightly for one week. The closures are necessary to accommodate bridge work. The closures are scheduled to occur between 10 p.m. and 5 a.m. February 3 through February 10.

Motorists traveling on I-4 will need to exit at S.R. 436 and cross at S.R. 436 to continue driving on I-4. Law enforcement officers will be present during this operation to manage traffic through the interchange.

Access to I-4 from S.R. 436 will be restricted during the closure.

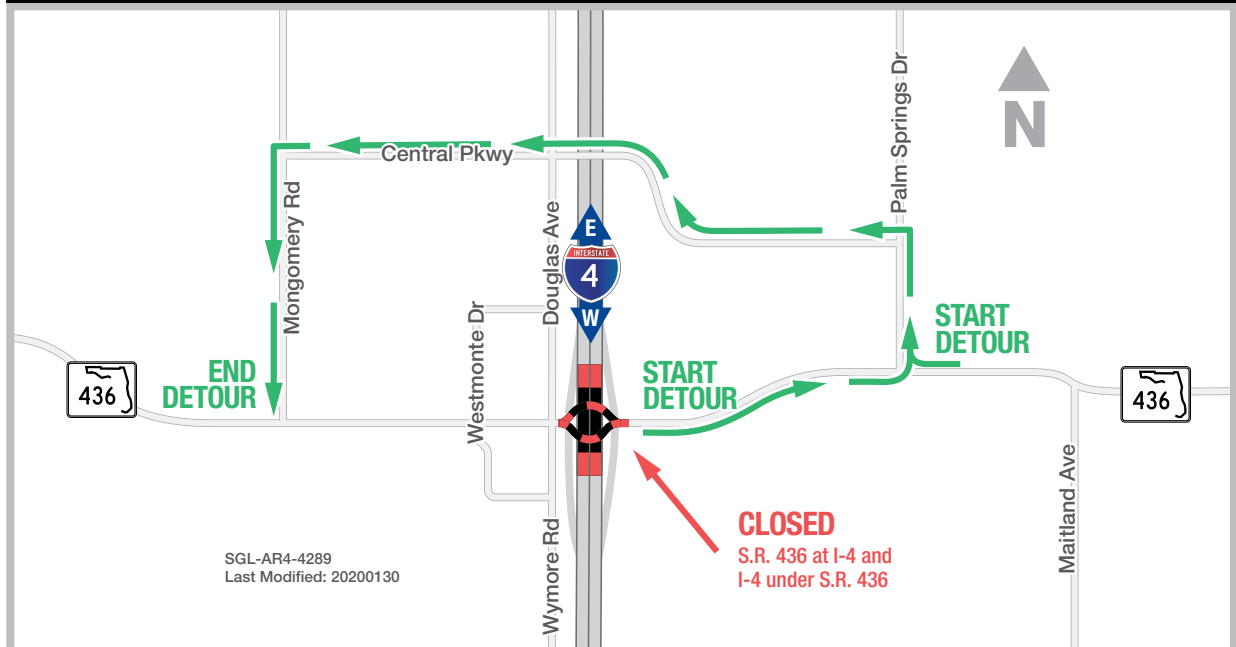
- Please see page 1 for eastbound I-4 detours
- Please see page 2 for westbound I-4 detours
- Please see page 3 for S.R. 436 east of I-4 detour

From S.R. 436, east of I-4 traveling to west of I-4:

- Turn north onto Palm Springs Drive
- Turn west onto Central Parkway
- Turn south onto Montgomery Road
- Continue to S.R. 436
- For eastbound, see map 3

No vehicles will be permitted to cross over I-4 on S.R. 436 during the closures

MAP 4 — TRAVELING TO S.R. 436 WEST OF I-4



PROJECT INFO

The \$2.3 billion I-4 Ultimate project is reconstructing 21 miles of interstate from west of Kirkman Road to east of State Road 434 in Longwood. For more information about I-4 Ultimate, contact David Parks, I-4 Ultimate Community Outreach Specialist, at 844-ULT-INFO (844-858-4636) or DavidParks@i4Ultimate.com.

Closure subject to change. Construction progress, roadway conditions and weather may require schedule adjustments. Please check i4ultimate.com/alertsmap for the most up-to-date information.



Sign up for I-4 Construction Updates and Alerts at I4Ultimate.com

Learn about design and construction on the next 40 miles of I-4 at I4Beyond.com