



# BUILDING A BETTER I-4

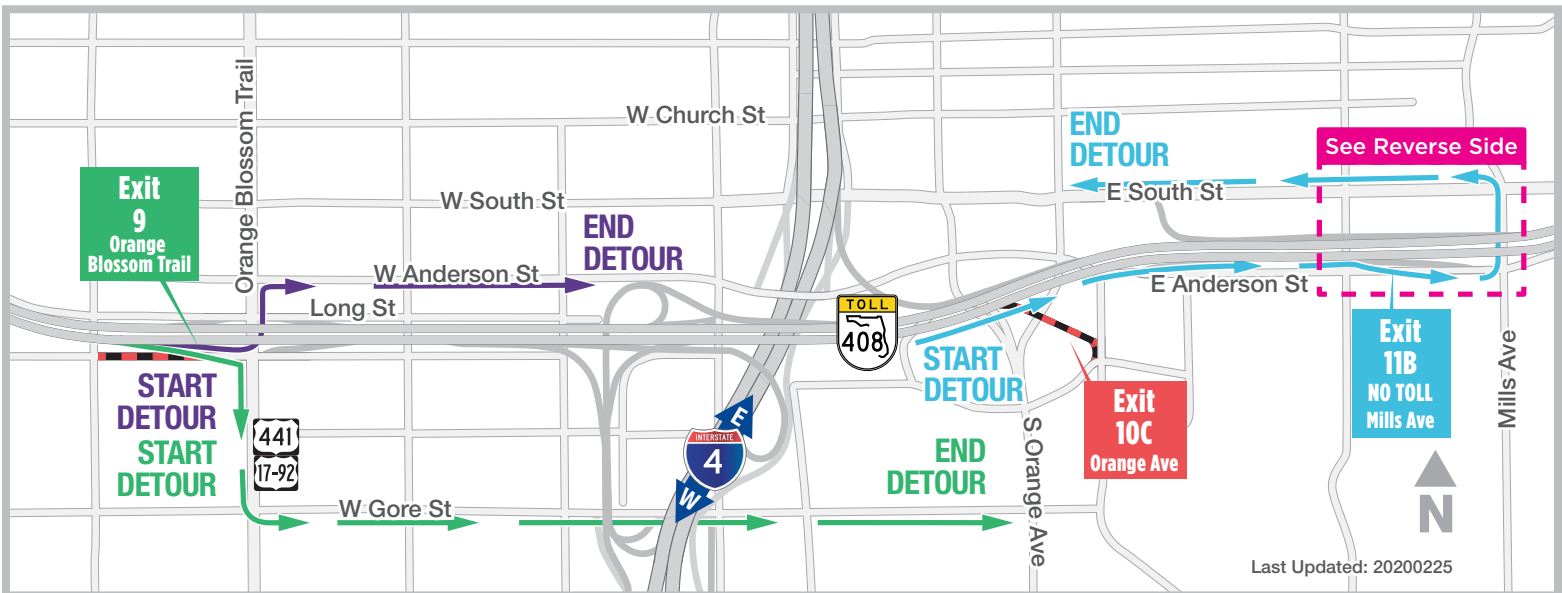
### Stay Informed:

- » Project Hotline: 844-ULT-INFO (858-4636)
- » Sign up for email and text alerts at [fdot.tips/I4Alerts](https://fdot.tips/I4Alerts)
- » Follow @i4Ultimate on Twitter
- » Subscribe to our monthly newsletter at [fdot.tips/I4News](https://fdot.tips/I4News)

## EB S.R. 408 EXIT TO ORANGE AVENUE (EXIT 10C) CLOSING FOR SIX MONTHS

The eastbound State Road 408 exit to Orange Avenue (Exit 10C) is closing for approximately six months as soon as 5 a.m. Monday, April 27. During the closure, crews will demolish and rebuild the ramp. To access Orange Avenue, motorists will need to use the exit to Mills Avenue (Exit 11B), where tolls will be suspended for the duration of the closure. A non-signalized U-turn will be created on Mills Avenue under S.R. 408, allowing motorists to then enter South Street toward downtown Orlando. Please see reverse side for more details.

Trucks will need to use the eastbound S.R. 408 exit to Orange Blossom Trail (U.S. 441/17-92) (Exit 9). A portion of Carter Street between Rio Grande Avenue and Orange Blossom Trail also will close to allow traffic to free flow from the S.R. 408 exit to Orange Blossom Trail. Carter Street between Rio Grande Avenue and Jones High School will temporarily become a two-way street to allow access to the school.



### Traveling to eastbound S.R. 408:

#### Option 1:

- Use Exit 9 to Orange Blossom Trail (U.S. 441/17-92)
- Turn right on Orange Blossom Trail
- Turn left on Gore Street

#### Option 2:

- Use Exit 9 to Orange Blossom Trail (U.S. 441/17-92)
- Turn left onto Orange Blossom Trail
- Turn right onto Anderson Street

#### Option 3 (No Trucks):

- Use Exit 11B to Mills Avenue (No Toll)
- Turn left on Mills Avenue
- Turn left on South Street

Closure subject to change. Construction progress, roadway conditions and weather may require schedule adjustments. Please check [i4ultimate.com/alertsmap](https://i4ultimate.com/alertsmap) for the most up-to-date information.



Sign up for I-4 Construction Updates and Alerts at [I4Ultimate.com](https://I4Ultimate.com)

Learn about design and construction on the next 40 miles of I-4 at [I4Beyond.com](https://I4Beyond.com)



# BUILDING A BETTER I-4

## Stay Informed:

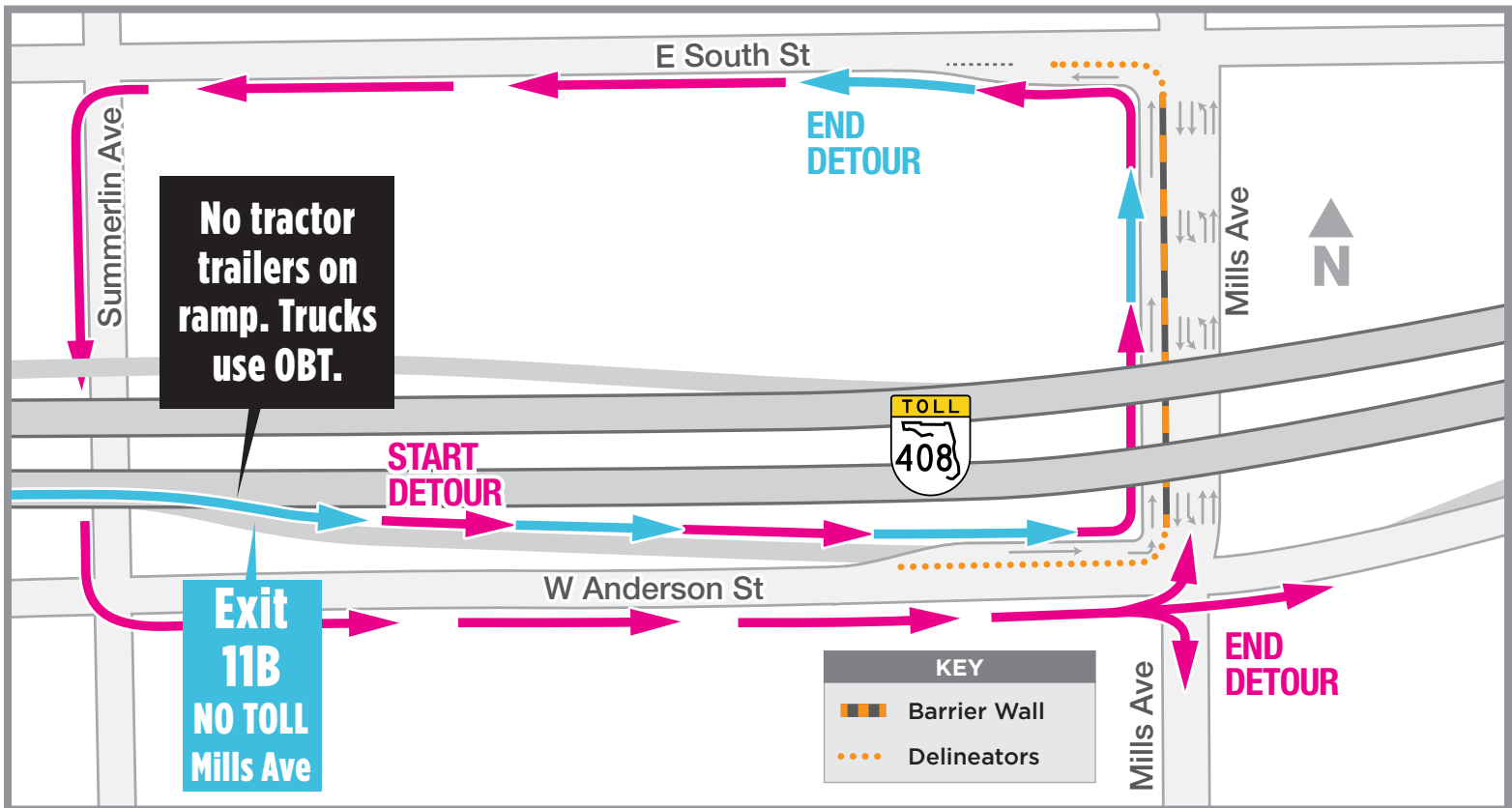
- » Project Hotline: 844-ULT-INFO (858-4636)
- » Sign up for email and text alerts at [fdot.tips/I4Alerts](https://fdot.tips/I4Alerts)
- » Follow @i4Ultimate on Twitter
- » Subscribe to our monthly newsletter at [fdot.tips/I4News](https://fdot.tips/I4News)

## EB S.R. 408 TRAFFIC EXITING TO MILLS AVENUE MUST FOLLOW U-TURN

The eastbound State Road 408 exit to Orange Avenue (Exit 10C) is closing for approximately six months as soon as 5 a.m. Monday, April 27. During the closure, crews will demolish and rebuild the ramp.

To access Orange Avenue, motorists will need to use the exit to Mills Avenue (11B), where tolls will be suspended for the duration of the closure. A non-signalized U-turn will be created on Mills Avenue under S.R. 408, allowing motorists to use South Street to travel toward downtown Orlando.

All traffic exiting onto Mills Avenue must follow the U-turn under S.R. 408. This includes drivers using the Mills Avenue exit to go south on Mills Avenue or east on Anderson Street. Trucks will need to use the eastbound S.R. 408 exit to Orange Blossom Trail (U.S. 441/17-92) (Exit 9).



### Traveling on eastbound S.R. 408:

- Use Exit 11B to Mills Avenue (No Toll)
- Turn left on Mills Avenue
- Turn left on South Street

### Traveling on eastbound S.R. 408 to Mills Avenue or eastbound Anderson Street:

- Use Exit 11B to Mills Avenue (No Toll)
- Turn left onto Mills Avenue
- Turn left onto South Street
- Turn left onto Summerlin Avenue
- Turn left onto Anderson Street



Sign up for I-4 Construction Updates and Alerts at [I4Ultimate.com](https://I4Ultimate.com)

Learn about design and construction on the next 40 miles of I-4 at [I4Beyond.com](https://I4Beyond.com)