



BUILDING A BETTER I-4

Stay Informed:

- » Project Hotline: 844-ULT-INFO (858-4636)
- » Sign up for email and text alerts at fdot.tips/I4Alerts
- » Follow @i4Ultimate on Twitter
- » Subscribe to our monthly newsletter at fdot.tips/I4News

WESTBOUND I-4 BETWEEN E.E. WILLIAMSON ROAD AND CENTRAL PARKWAY SHIFTING INTO FINAL CONFIGURATION

The Florida Department of Transportation (FDOT) will shift more than three miles of westbound Interstate 4 (I-4) into its final configuration as soon as Thursday, July 9.

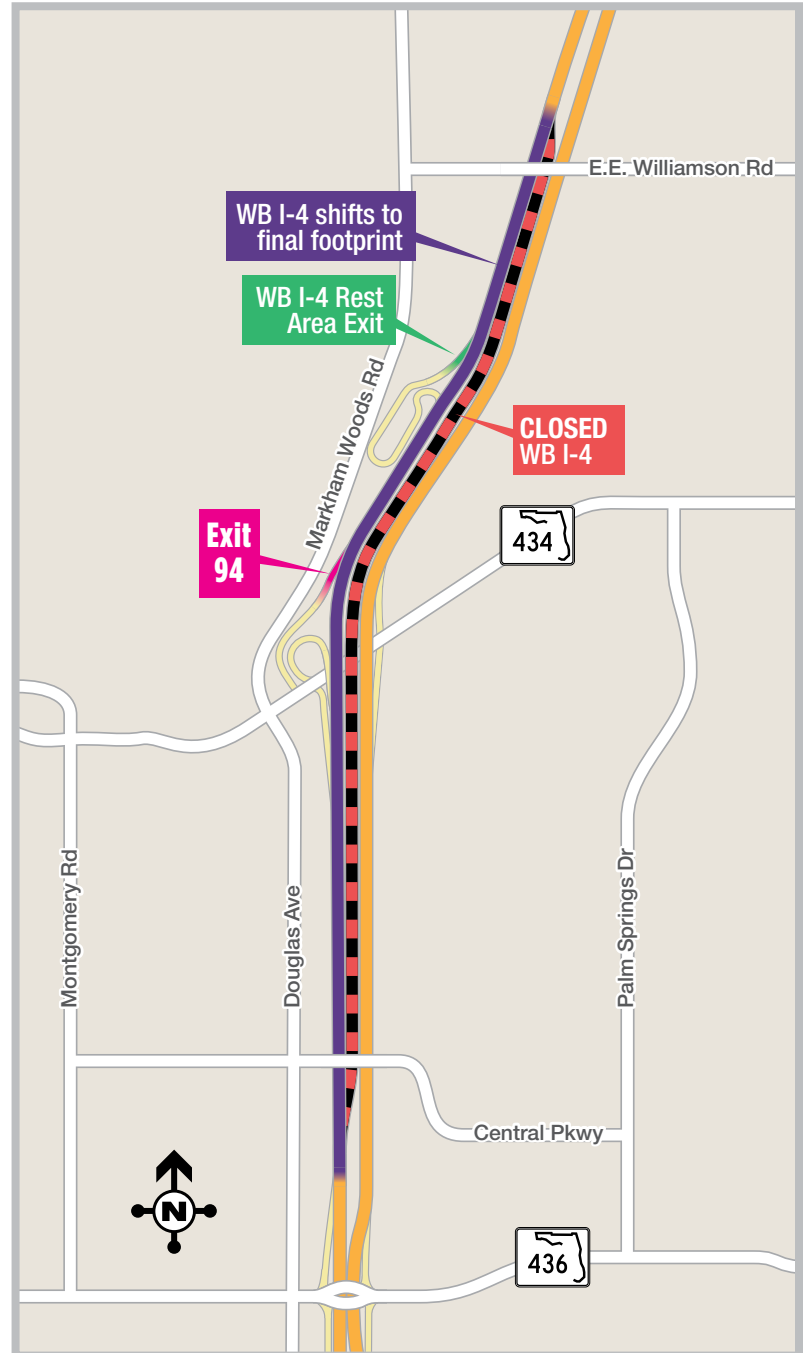
The location of the shift is between the E.E. Williamson overpass and just west of the Central Parkway overpass.

The access point to State Road (S.R.) 434 (Exit 94) will return to its original location of approximately one mile after the E.E. Williamson overpass. The westbound I-4 exit to the westbound rest area also returns to its original location of approximately half-a-mile after the E.E. Williamson overpass.

This shift is a milestone for the I-4 Ultimate project as approximately eight continuous miles of westbound I-4 is now in its final footprint from the E.E. Williamson overpass to just east of Lee Road.

To facilitate the shift, FDOT will temporarily close the westbound I-4 entrance ramp from S.R. 434 and the westbound I-4 exit ramp to S.R. 434 overnight Wednesday, July 8. Westbound I-4 will also have two lanes closed from the E.E. Williamson overpass to the Central Parkway overpass. Please see reverse side for more information.

Motorists are advised to maintain a safe speed when driving through the work zone and carefully follow roadway signs.



PROJECT INFO

The \$2.3 billion I-4 Ultimate project is reconstructing 21 miles of interstate from west of Kirkman Road to east of State Road 434 in Longwood. For more information about I-4 Ultimate, contact David Parks, I-4 Ultimate Community Outreach Specialist, at 844-ULT-INFO (844-858-4636) or DavidParks@i4Ultimate.com.



Sign up for I-4 Construction Updates and Alerts at I4Ultimate.com

Learn about design and construction on the next 40 miles of I-4 at I4Beyond.com



BUILDING A BETTER I-4

Stay Informed:

- » Project Hotline: 844-ULT-INFO (858-4636)
- » Sign up for email and text alerts at fdot.tips/I4Alerts
- » Follow @i4Ultimate on Twitter
- » Subscribe to our monthly newsletter at fdot.tips/I4News

WESTBOUND I-4 ENTRANCE AND EXIT RAMPS AT S.R. 434 WILL CLOSE FOR ONE NIGHT

The Florida Department of Transportation (FDOT) is temporarily closing the westbound Interstate 4 (I-4) entrance ramps from S.R. 434 and the westbound I-4 exit ramp to S.R. 434 for one night. Up to two lanes of westbound I-4 will be closed in this area at the same time.

The roadway closures are scheduled to begin as early as 10 p.m. on Wednesday, July 8, and reopen the following morning by 5 a.m.

The closure is necessary for crews to safely facilitate a permanent traffic shift of westbound I-4 between the E.E. Williamson overpass and just west of the Central Parkway overpass. Please see reverse side for more information.

Traveling EB S.R. 434 to WB I-4:

- Turn right onto Douglas Avenue
- Turn right onto Westmonte Drive
- Turn left onto S.R. 436
- Follow signage to westbound I-4

Traveling EB S.R. 434 to WB I-4 (Recommended for large trucks):

- Turn right onto Ronald Reagan Boulevard
- Turn right onto S.R. 436
- Follow signage to westbound I-4

Traveling EB S.R. 434 to WB I-4, west of Montgomery Road (Recommended for large trucks):

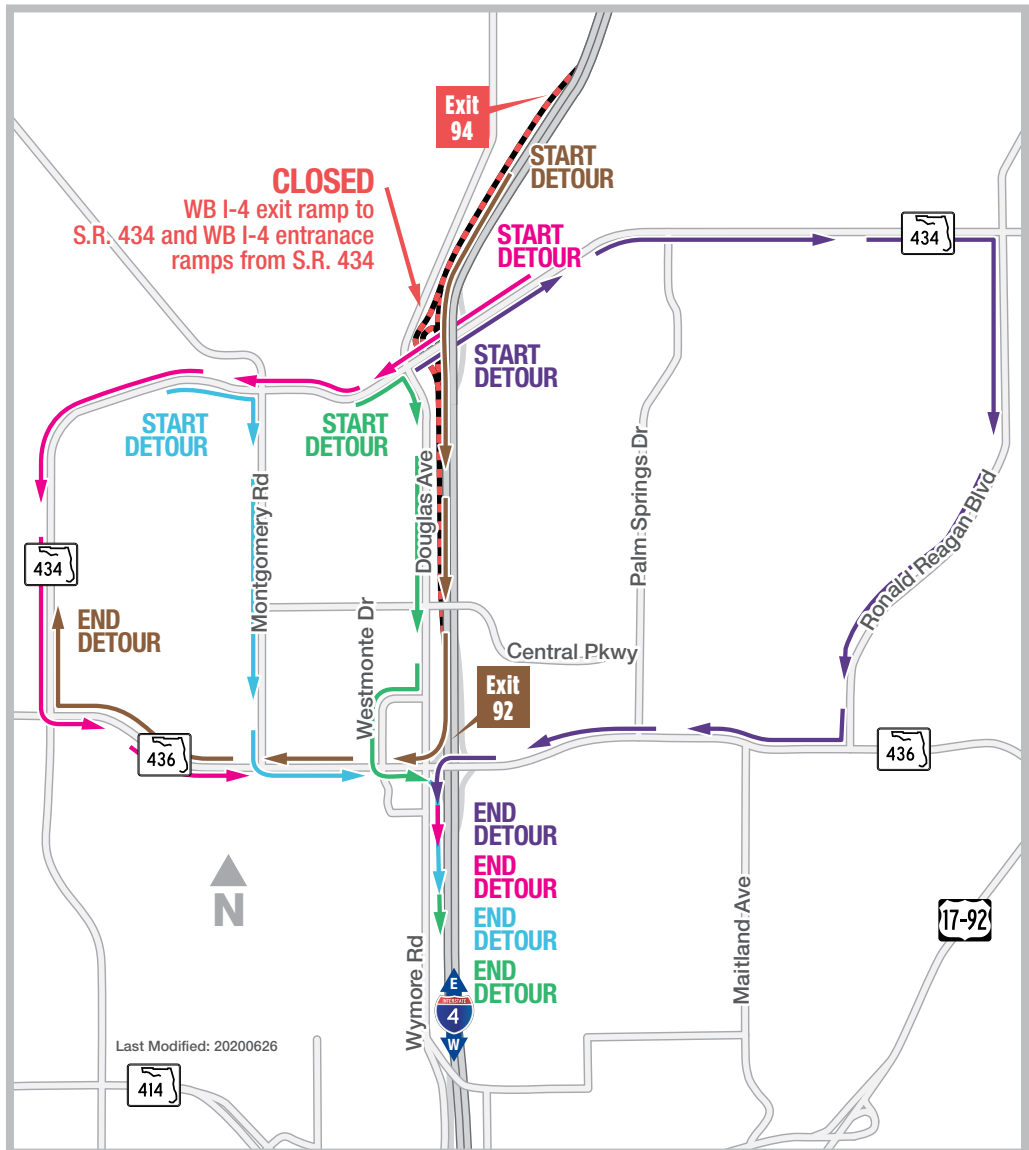
- Turn right onto Montgomery Road
- Turn left onto S.R. 436
- Follow signage to westbound I-4

Traveling WB S.R. 434 to WB I-4:

- Turn left onto S.R. 436
- Follow signage to westbound I-4

Traveling on WB I-4 to S.R. 434:

- Continue on westbound I-4 to S.R. 436 (Exit 92)
- Turn right onto S.R. 436
- Continue on S.R. 434



Sign up for I-4 Construction Updates and Alerts at I4Ultimate.com

Learn about design and construction on the next 40 miles of I-4 at I4Beyond.com