



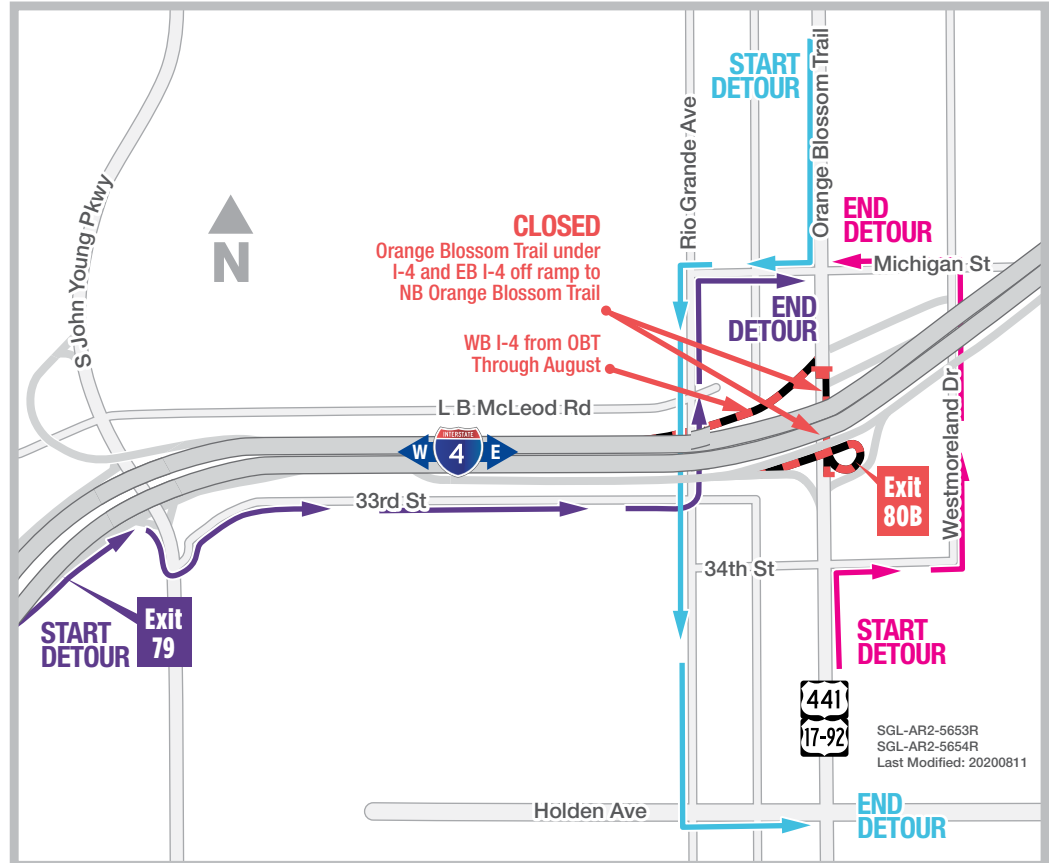
# BUILDING A BETTER I-4

## Stay Informed:

- » Project Hotline: 844-ULT-INFO (858-4636)
- » Sign up for email and text alerts at [fdot.tips/I4Alerts](https://fdot.tips/I4Alerts)
- » Follow @i4Ultimate on Twitter
- » Subscribe to our monthly newsletter at [fdot.tips/I4News](https://fdot.tips/I4News)

## ORANGE BLOSSOM TRAIL UNDER I-4 CLOSING NIGHTLY FOR ONE WEEK

The Florida Department of Transportation (FDOT) is temporarily closing Orange Blossom Trail (U.S. 441/17-92) under Interstate 4 (I-4) and the eastbound I-4 exit ramp to northbound Orange Blossom Trail (Exit 80B) overnight August 12-15. The nightly closures are scheduled to begin as soon as 10 p.m. each night and end by 5 a.m. the following mornings. The eastbound ramp from Orange Blossom Trail and the eastbound and westbound I-4 exit ramps to southbound Orange Blossom Trail will remain open during these closures. Reminder: The westbound I-4 entrance ramp from southbound Orange Blossom Trail remains closed through August. The closures are necessary for bridge work.



### Traveling eastbound on I-4 to Orange Blossom Trail (Exit 80B):

- Use Exit 79 to John Young Parkway
- Turn right onto John Young Parkway
- Turn left 33rd Street
- Turn left onto Rio Grande Avenue
- Turn right onto Michigan Street

### Traveling southbound on Orange Blossom Trail:

- Turn right onto Michigan Street
- Turn left onto Rio Grande Avenue
- Turn left onto Holden Avenue

### Traveling northbound on Orange Blossom Trail:

- Turn right onto 34th Street
- Turn left onto Westmoreland Drive
- Turn left onto Michigan Street

## PROJECT INFO

The \$2.3 billion I-4 Ultimate project is reconstructing 21 miles of interstate from west of Kirkman Road to east of State Road 434 in Longwood. For more information about I-4 Ultimate, contact David Parks, I-4 Ultimate Community Outreach Specialist at 844-ULT-INFO (844-858-4636) or [DavidParks@i4Ultimate.com](mailto:DavidParks@i4Ultimate.com).

Closure subject to change. Construction progress, roadway conditions and weather may require schedule adjustments. Please check [i4ultimate.com/alertsmap](https://i4ultimate.com/alertsmap) for the most up-to-date information.



Sign up for I-4 Construction Updates and Alerts at [I4Ultimate.com](https://I4Ultimate.com)

Learn about design and construction on the next 40 miles of I-4 at [I4Beyond.com](https://I4Beyond.com)