



# BUILDING A BETTER I-4

## Stay Informed:

- » Project Hotline: 844-ULT-INFO (858-4636)
- » Sign up for email and text alerts at [fdot.tips/I4Alerts](https://fdot.tips/I4Alerts)
- » Follow @i4Ultimate on Twitter
- » Subscribe to our monthly newsletter at [fdot.tips/I4News](https://fdot.tips/I4News)

## WESTBOUND I-4 BETWEEN MICHIGAN STREET AND RIO GRANDE AVENUE SHIFTING TO PERMANENT CONFIGURATION

The Florida Department of Transportation (FDOT) is shifting the westbound Interstate 4 (I-4) lanes between Michigan Street and Rio Grande Avenue into their permanent configuration and installing overhead signs as soon as Sunday morning, August 30. To facilitate the shift, WB I-4 from Kaley Avenue to Orange Blossom Trail (U.S. 441/17-92) will close August 30 from midnight to 6 a.m. The westbound I-4 entrance ramps from Orange Blossom Trail and Kaley Avenue will also be closed during this time. Please see pages two and three for detours.

Reminder: The westbound I-4 entrance ramp from Gore Street is closed through the middle of September.



### PROJECT INFO

The \$2.3 billion I-4 Ultimate project is reconstructing 21 miles of interstate from west of Kirkman Road to east of State Road 434 in Longwood. For more information about I-4 Ultimate, contact David Parks, I-4 Ultimate Community Outreach Specialist, at 844-ULT-INFO (844-858-4636) or [DavidParks@i4Ultimate.com](mailto:DavidParks@i4Ultimate.com).



Sign up for I-4 Construction Updates and Alerts at [I4Ultimate.com](https://I4Ultimate.com)

Learn about design and construction on the next 40 miles of I-4 at [I4Beyond.com](https://I4Beyond.com)



# BUILDING A BETTER I-4

## Stay Informed:

- » Project Hotline: 844-ULT-INFO (858-4636)
- » Sign up for email and text alerts at [fdot.tips/I4Alerts](https://fdot.tips/I4Alerts)
- » Follow @i4Ultimate on Twitter
- » Subscribe to our monthly newsletter at [fdot.tips/I4News](https://fdot.tips/I4News)

## WESTBOUND I-4 FROM KALEY AVENUE TO JOHN YOUNG PARKWAY CLOSING FOR ONE NIGHT

The Florida Department of Transportation (FDOT) is closing westbound Interstate 4 (I-4) from Kaley Avenue to John Young Parkway and the westbound I-4 entrance ramps from Kaley Avenue and Orange Blossom Trail from midnight to 6 a.m. Sunday, August 30. The nightly closures are necessary to install overhead signs, and shift the westbound I-4 lanes between Michigan Street and Rio Grande Avenue into their final alignment.

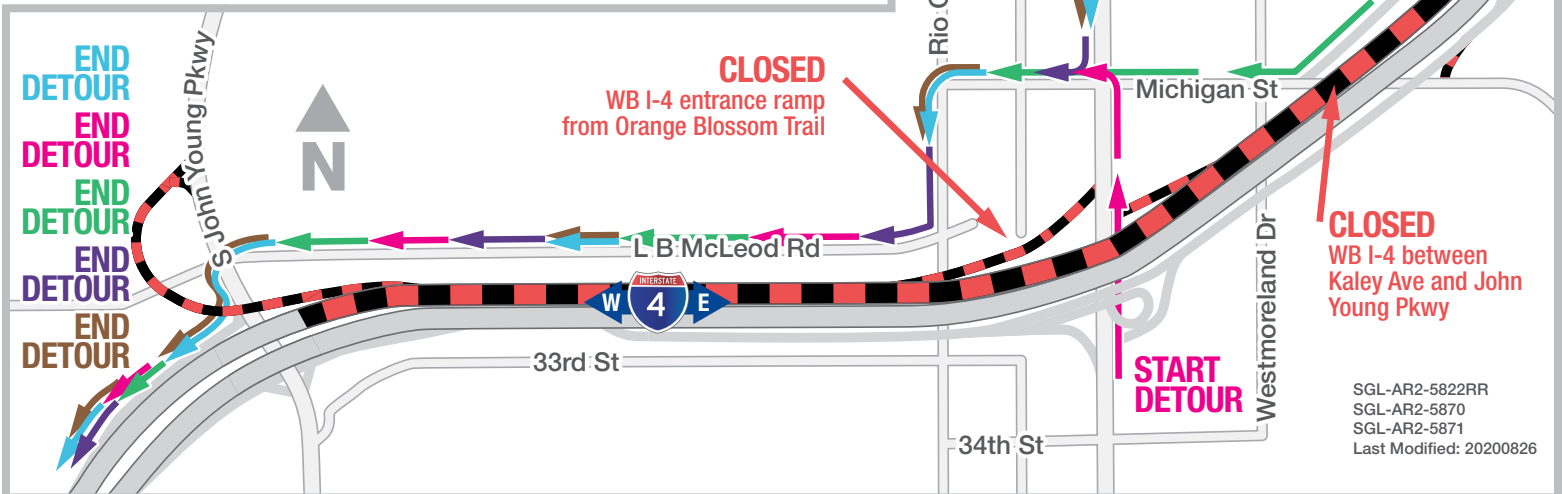
Reminder: The westbound I-4 entrance ramp from Gore Street is closed through the middle of September. See page three for additional detours dedicated for trucks.

### Traveling westbound on I-4:

- Use exit 81 to Michigan Street
- Turn left onto Rio Grande Avenue
- Turn right onto LB McLeod Road
- Turn left onto John Young Parkway
- Follow signs to westbound I-4

### Accessing westbound I-4 from Kaley Avenue:

- Continue west on Kaley Avenue
- Turn left onto Orange Blossom Trail
- Turn right onto Michigan Street
- Turn left onto Rio Grande Avenue
- Turn right onto LB McLeod Road
- Turn left onto John Young Parkway
- Follow signs to westbound I-4



SGL-AR2-5822RR  
SGL-AR2-5870  
SGL-AR2-5871  
Last Modified: 20200826

### Accessing westbound I-4 from southbound Orange Blossom Trail:

- Turn right onto Michigan Street
- Turn left onto Rio Grande Avenue
- Turn right onto LB McLeod Road
- Turn left onto John Young Parkway
- Follow signs to westbound I-4

### Accessing westbound I-4 from northbound Orange Blossom Trail:

- Turn left onto Michigan Street
- Turn left onto Rio Grande Avenue
- Turn right onto LB McLeod Road
- Turn left onto John Young Parkway
- Follow signs to westbound I-4

### Accessing westbound I-4 from Gore Street:

- Continue west on Gore Street
- Turn left onto Orange Blossom Trail
- Turn right onto Michigan Street
- Turn left onto Rio Grande Avenue
- Turn right onto LB McLeod Road
- Turn left onto John Young Parkway
- Follow signs to westbound I-4

Closure subject to change. Construction progress, roadway conditions and weather may require schedule adjustments.

Please check [i4ultimate.com/alertsmap](https://i4ultimate.com/alertsmap) for the most up-to-date information.



# BUILDING A BETTER I-4

## Stay Informed:

- » Project Hotline: 844-ULT-INFO (858-4636)
- » Sign up for email and text alerts at [fdot.tips/I4Alerts](https://fdot.tips/I4Alerts)
- » Follow @i4Ultimate on Twitter
- » Subscribe to our monthly newsletter at [fdot.tips/I4News](https://fdot.tips/I4News)

## WESTBOUND I-4 FROM KALEY AVENUE TO JOHN YOUNG PARKWAY CLOSING FOR ONE NIGHT

### TRUCKS DETOURED VIA COLONIAL DRIVE (STATE ROAD 50) AND JOHN YOUNG PARKWAY

The Florida Department of Transportation (FDOT) is closing westbound Interstate 4 (I-4) from Kaley Avenue to John Young Parkway and the westbound I-4 entrance ramps from Kaley Avenue and Orange Blossom Trail from midnight to 6 a.m. Sunday, August 30. The nightly closures are necessary to install overhead signs, and shift the westbound I-4 lanes between Michigan Street and Rio Grande Avenue into their final alignment.

Reminder: The westbound I-4 entrance ramp from Gore Street remains closed through the middle of September. See page two for general traffic detours.

### Traveling westbound on I-4:

- Use Exit 84A to Colonial Drive
- Turn right onto Colonial Drive
- Turn left onto John Young Parkway
- Follow signs to westbound I-4

### Accessing westbound I-4 from southbound Orange Blossom Trail:

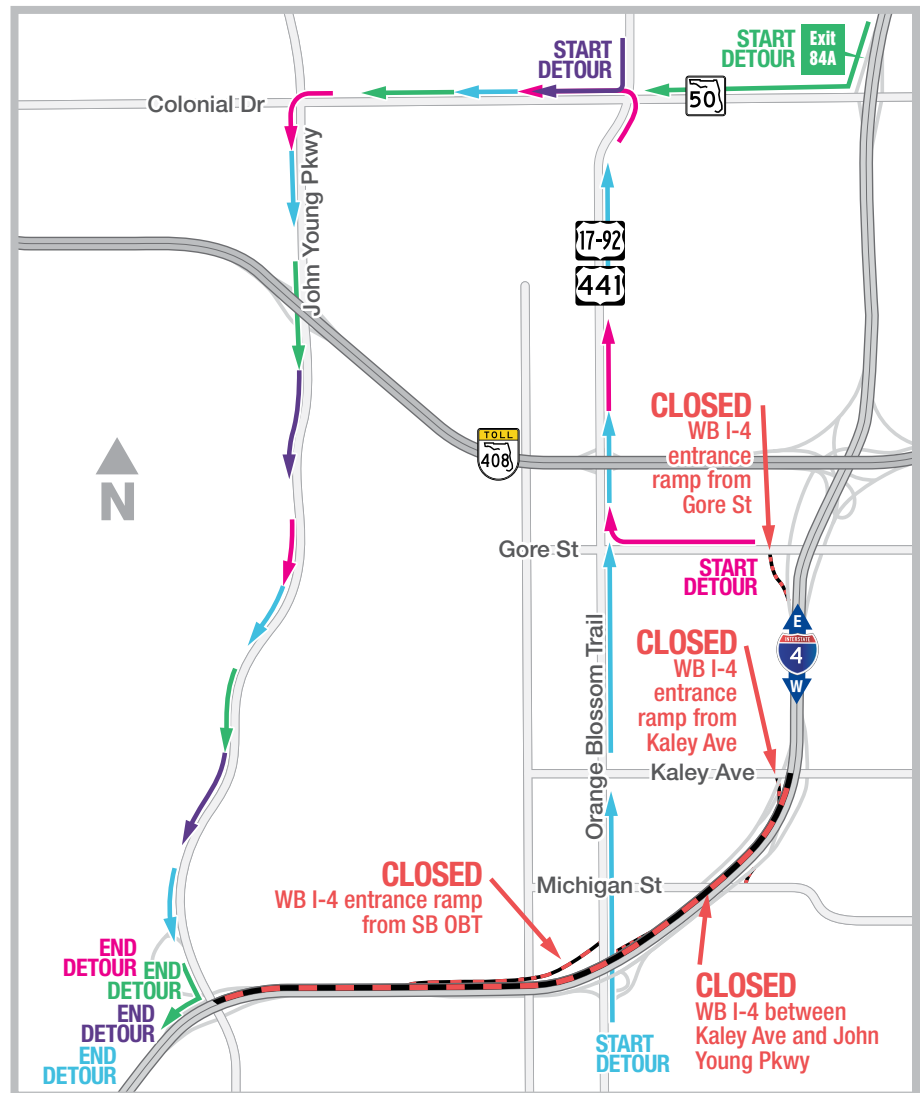
- Turn right onto Colonial Drive
- Turn left onto John Young Parkway
- Follow signs to westbound I-4

### Accessing westbound I-4 from northbound Orange Blossom Trail:

- Turn left onto Colonial Drive
- Turn left onto John Young Parkway
- Follow signs to westbound I-4

### Accessing westbound I-4 from Gore Street:

- Continue west on Gore Street
- Turn right onto northbound Orange Blossom Trail
- Turn left onto Colonial Drive
- Turn left onto John Young Parkway
- Follow signs to westbound I-4



Sign up for I-4 Construction Updates and Alerts at [I4Ultimate.com](https://I4Ultimate.com)

Learn about design and construction on the next 40 miles of I-4 at [I4Beyond.com](https://I4Beyond.com)