



BUILDING A BETTER I-4

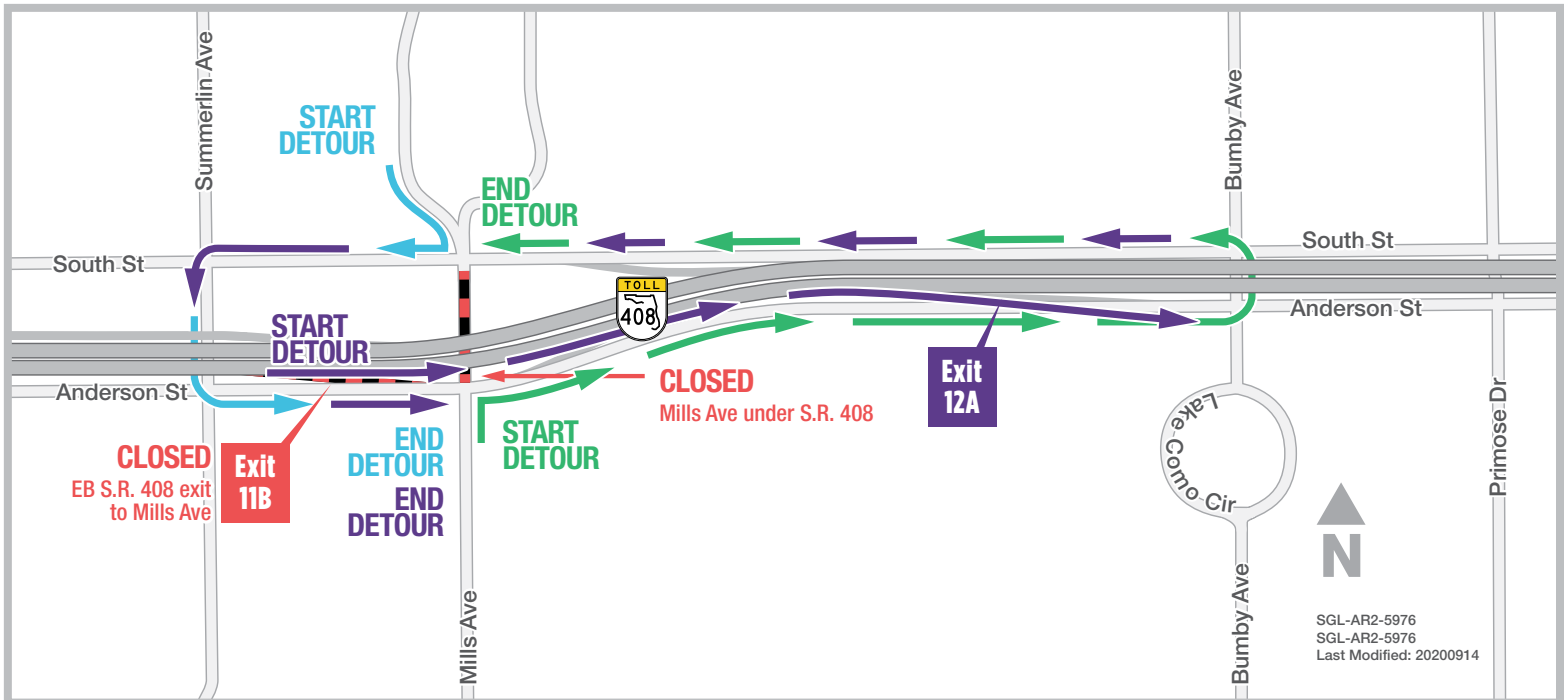
Stay Informed:

- » Project Hotline: 844-ULT-INFO (858-4636)
- » Sign up for email and text alerts at fdot.tips/I4Alerts
- » Follow @i4Ultimate on Twitter
- » Subscribe to our monthly newsletter at fdot.tips/I4News

CLOSURES AT MILLS AVENUE SCHEDULED OVERNIGHT SEPTEMBER 17

CLOSURES NECESSARY TO SHIFT MILLS AVENUE TO PREVIOUS CONFIGURATION

The Florida Department of Transportation (FDOT) is temporarily closing the eastbound State Road (S.R.) 408 exit ramp to Mills Avenue (Exit 11B) and Mills Avenue under S.R. 408 overnight September 17. The closure is scheduled to begin as soon as 8 p.m. and end by 6 a.m. the following morning. The closure is necessary to remove the temporary U-turn detour put in place during the long-term closure of the eastbound S.R. 408 exit ramp to Orange Avenue. Tolls will resume at the exit to Mills Avenue when it opens at 6 a.m. September 18, and Mills Avenue will return to its original configuration. Motorists also can expect lane closures on eastbound S.R. 408 at the Mills Avenue area.



Traveling northbound on Mills Avenue:

- Turn right onto Anderson Street
- Turn left onto Bumby Avenue
- Turn left onto South Street

Traveling eastbound on S.R. 408:

- Continue east on S.R. 408
- Use Exit 12A to Bumby Avenue
- Turn left onto Bumby Avenue
- Turn left onto South Street
- Turn left onto Summerlin Avenue
- Follow signs to eastbound S.R. 408

Traveling southbound on Mills Avenue:

- Turn right onto South Street
- Turn left onto Summerlin Avenue
- Turn left onto Anderson Street



Sign up for I-4 Construction Updates and Alerts at I4Ultimate.com

Learn about design and construction on the next 40 miles of I-4 at I4Beyond.com