



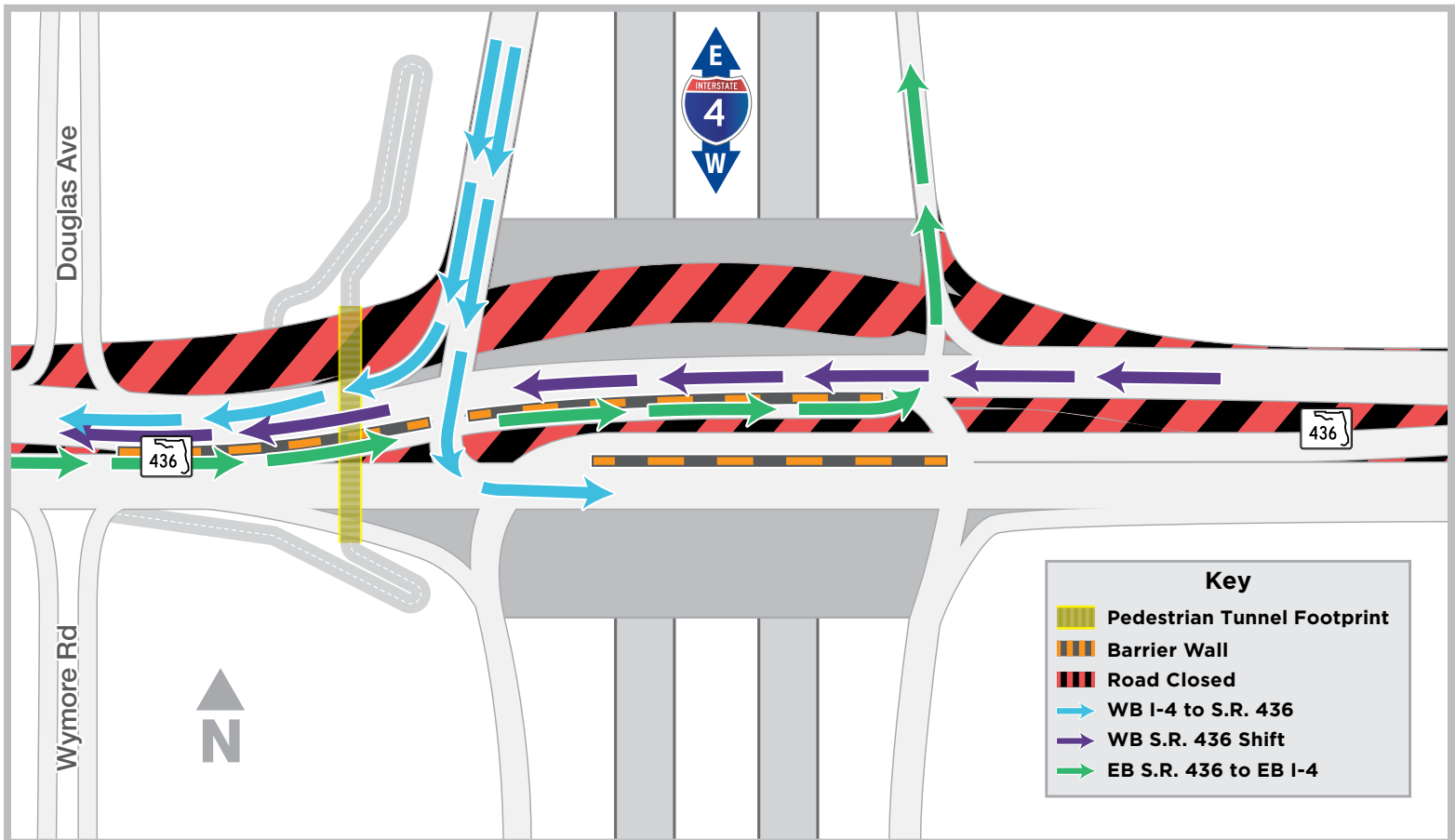
# BUILDING A BETTER I-4

## Stay Informed:

- » Project Hotline: 844-ULT-INFO (858-4636)
- » Sign up for email and text alerts at [fdot.tips/I4Alerts](https://fdot.tips/I4Alerts)
- » Follow @i4Ultimate on Twitter
- » Subscribe to our monthly newsletter at [fdot.tips/I4News](https://fdot.tips/I4News)

## WB STATE ROAD 436 OVER I-4 SHIFTING TO NEW CENTER LANES

The Florida Department of Transportation (FDOT) will shift the westbound State Road (S.R.) 436 lanes over Interstate 4 (I-4) onto the newly constructed center lanes as soon as Saturday morning, October 10. The traffic shift accommodates continued construction of the new pedestrian tunnel under S.R. 436. To facilitate the shift, all the entrance and exit ramps at the S.R. 436 and I-4 interchange will close overnight, Friday, October 9 at 8 p.m. Please see pages two and three for more information.



### PROJECT INFO

The \$2.3 billion I-4 Ultimate project is reconstructing 21 miles of interstate from west of Kirkman Road to east of State Road 434 in Longwood. For more information about I-4 Ultimate, contact David Parks, I-4 Ultimate Community Outreach Specialist, at 844-ULT-INFO (844-858-4636) or [DavidParks@i4Ultimate.com](mailto:DavidParks@i4Ultimate.com).



Sign up for I-4 Construction Updates and Alerts at [I4Ultimate.com](https://I4Ultimate.com)

Learn about design and construction on the next 40 miles of I-4 at [I4Beyond.com](https://I4Beyond.com)



# BUILDING A BETTER I-4

## Stay Informed:

- » Project Hotline: 844-ULT-INFO (858-4636)
- » Sign up for email and text alerts at [fdot.tips/I4Alerts](https://fdot.tips/I4Alerts)
- » Follow @i4Ultimate on Twitter
- » Subscribe to our monthly newsletter at [fdot.tips/I4News](https://fdot.tips/I4News)

## WESTBOUND I-4 ENTRANCE AND EXIT RAMPS AT STATE ROAD 436 CLOSING FOR ONE NIGHT

The Florida Department of Transportation (FDOT) will temporarily close the westbound Interstate 4 (I-4) entrance and exit ramps at State Road (S.R.) 436 for one night.

The ramp closures will occur Friday, October 9 at 8 p.m. and will reopen the following morning by 8 a.m.

The temporary closures are to facilitate a traffic shift on S.R. 436 over I-4 to allow continued construction of the pedestrian tunnel. Please see page one for more details about the shift.

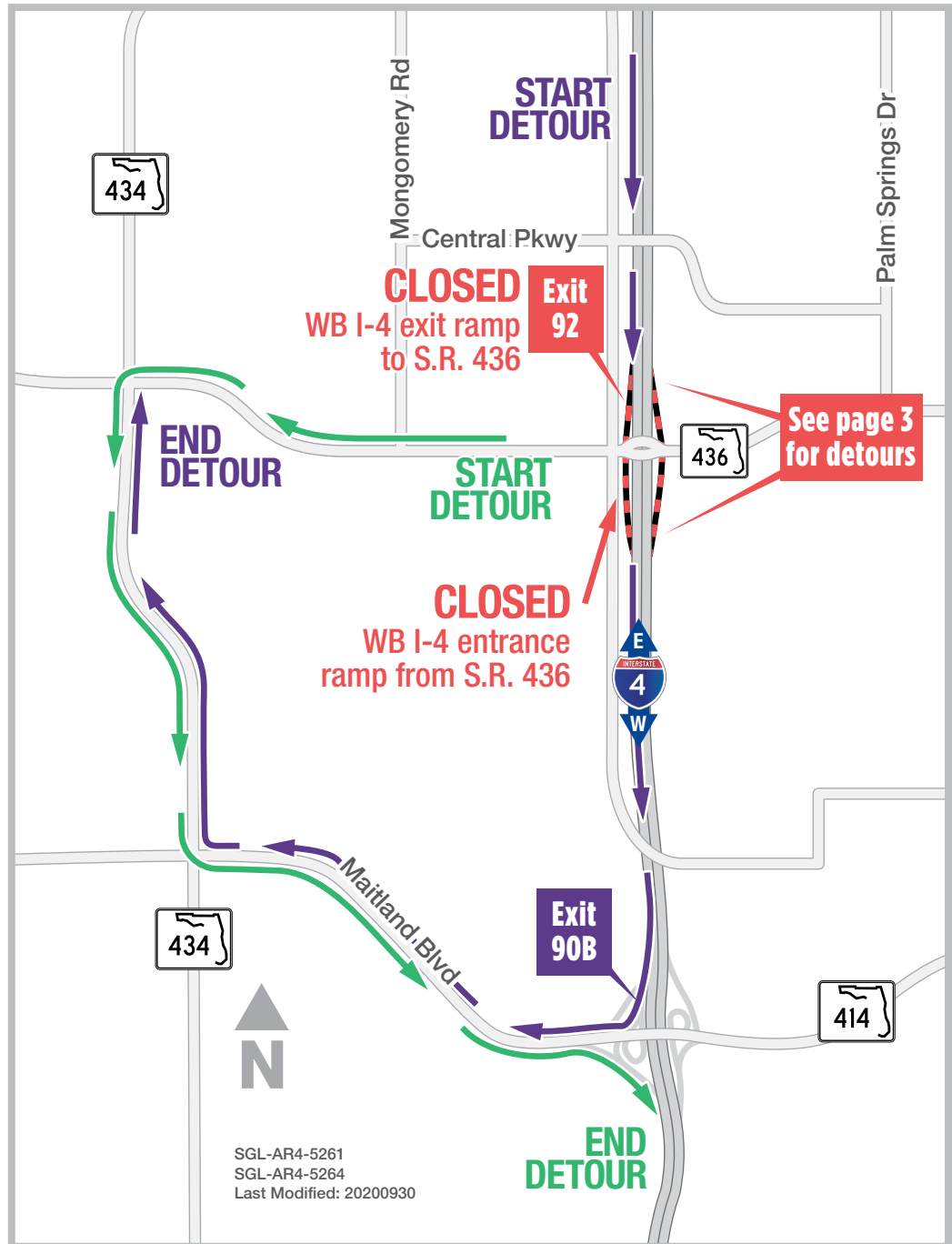
In addition to these closures, the eastbound I-4 entrance and exit ramps at S.R. 436 will also close at this time as well. Please see page three for more information.

### Traveling westbound S.R. 436 to westbound I-4:

- Continue westbound S.R. 436
- Turn left onto S.R. 434
- Turn left onto Maitland Boulevard (S.R. 414)
- Follow signs to westbound I-4 entrance ramp

### Traveling westbound I-4 to S.R. 436:

- Use Exit 90B to westbound Maitland Boulevard (S.R. 414)
- Take exit to S.R. 434
- Turn right onto S.R. 434



Sign up for I-4 Construction Updates and Alerts at [I4Ultimate.com](https://I4Ultimate.com)

Learn about design and construction on the next 40 miles of I-4 at [I4Beyond.com](https://I4Beyond.com)



# BUILDING A BETTER I-4

## Stay Informed:

- » Project Hotline: 844-ULT-INFO (858-4636)
- » Sign up for email and text alerts at [fdot.tips/I4Alerts](https://fdot.tips/I4Alerts)
- » Follow @i4Ultimate on Twitter
- » Subscribe to our monthly newsletter at [fdot.tips/I4News](https://fdot.tips/I4News)

## EASTBOUND I-4 ENTRANCE AND EXIT RAMPS AT STATE ROAD 436 CLOSING FOR ONE NIGHT

The Florida Department of Transportation (FDOT) will temporarily close the eastbound Interstate 4 (I-4) entrance and exit ramps at State Road (S.R.) 436 for one night.

The ramp closures will occur Friday, October 9 at 8 p.m. and will reopen the following morning by 8 a.m.

The temporary closures are to facilitate a traffic shift on S.R. 436 over I-4 to allow continued construction of the pedestrian tunnel. Please see page one for more details about the shift.

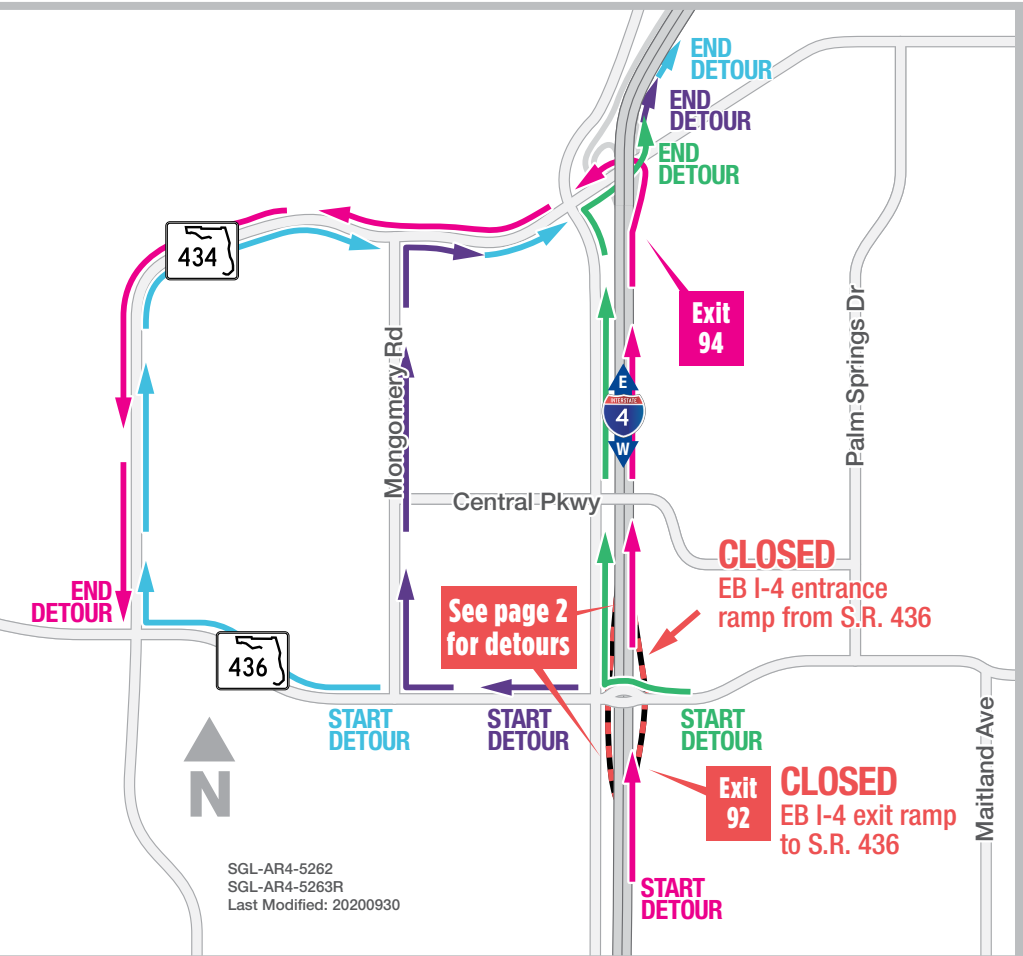
In addition to these closures, the westbound I-4 entrance and exit ramps at S.R. 436 will also close at this time as well. Please see page two for more information.

### Traveling on S.R. 436 to eastbound I-4:

- Turn right onto Douglas Avenue
- Turn right onto S.R. 434
- Follow signs to eastbound I-4

### Traveling on S.R. 436 near Montgomery Road to eastbound I-4:

- Turn right onto Montgomery Road
- Turn right onto S.R. 434
- Follow signs to eastbound I-4



### Traveling on S.R. 436 near S.R. 434 to eastbound I-4:

- Turn right onto S.R. 434
- Follow signs to eastbound I-4

### Traveling eastbound I-4 to S.R. 436:

- Continue on eastbound I-4
- Take Exit 94 to S.R. 434
- Turn left onto S.R. 434
- Continue to S.R. 436

## PROJECT INFO

The \$2.3 billion I-4 Ultimate project is reconstructing 21 miles of interstate from west of Kirkman Road to east of State Road 434 in Longwood. For more information about I-4 Ultimate, contact David Parks, I-4 Ultimate Community Outreach Specialist, at 844-ULT-INFO (844-858-4636) or [DavidParks@i4Ultimate.com](mailto:DavidParks@i4Ultimate.com).



Sign up for I-4 Construction Updates and Alerts at [I4Ultimate.com](https://I4Ultimate.com)

Learn about design and construction on the next 40 miles of I-4 at [I4Beyond.com](https://I4Beyond.com)