



BUILDING A BETTER I-4

Stay Informed:

- » Project Hotline: 844-ULT-INFO (858-4636)
- » Sign up for email and text alerts at fdot.tips/I4Alerts
- » Follow @i4Ultimate on Twitter
- » Subscribe to our monthly newsletter at fdot.tips/I4News

EASTBOUND I-4 THROUGH DOWNTOWN ORLANDO CLOSING OVERNIGHT DECEMBER 11

The Florida Department of Transportation (FDOT) is temporarily closing eastbound Interstate 4 (I-4) between South Street and Colonial Drive (State Road 50) overnight as soon as 10 p.m. Friday, December 11, to 8 a.m. Saturday, December 12. The entrance ramp from Anderson Street, the exit ramps to Amelia Street and Colonial Drive, and the eastbound and westbound S.R. 408 ramps to I-4 also will close. The closures are necessary for road work. See reverse side for additional closures and detours.

Traveling eastbound on I-4:

- Use Exit 83 to South Street
- Continue northbound on Garland Avenue
- Follow signs to eastbound I-4

Accessing eastbound I-4 from eastbound S.R. 408:

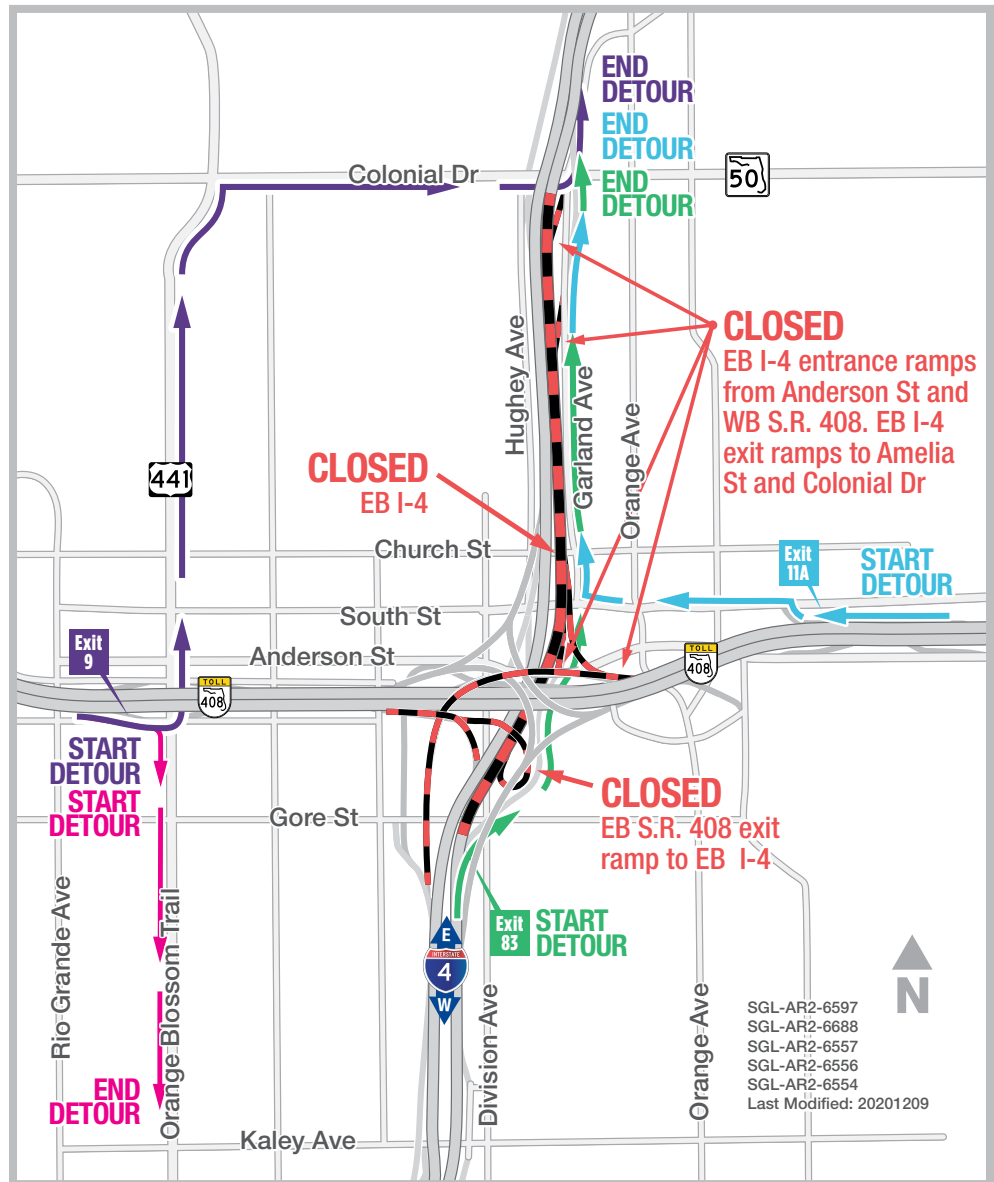
- Use Exit 9 to Orange Blossom Trail (U.S. 441/17-92)
- Turn left onto Orange Blossom Trail
- Turn right onto Colonial Drive
- Follow signs to eastbound I-4

Accessing eastbound I-4 from westbound S.R. 408:

- Use Exit 11A to Rosalind Avenue
- Turn left onto South Street
- Turn right onto Garland Avenue
- Follow signs to eastbound I-4

Accessing westbound I-4 from eastbound S.R. 408:

- Use exit 9 to Orange Blossom Trail
- Turn right onto Orange Blossom Trail
- Follow signs to I-4 westbound



Sign up for I-4 Construction Updates and Alerts at I4Ultimate.com

Learn about design and construction on the next 40 miles of I-4 at I4Beyond.com



BUILDING A BETTER I-4

Stay Informed:

- » Project Hotline: 844-ULT-INFO (858-4636)
- » Sign up for email and text alerts at fdot.tips/I4Alerts
- » Follow @i4Ultimate on Twitter
- » Subscribe to our monthly newsletter at fdot.tips/I4News

EASTBOUND I-4 THROUGH DOWNTOWN ORLANDO CLOSING OVERNIGHT DECEMBER 11

The Florida Department of Transportation (FDOT) is temporarily closing eastbound Interstate 4 (I-4) between South Street and Colonial Drive (State Road 50) overnight as soon as 10 p.m. Friday, December 11, to 8 a.m. Saturday, December 12. The entrance ramp from Anderson Street, the exit ramps to Amelia Street and Colonial Drive, and the eastbound and westbound S.R. 408 ramps to eastbound I-4 also will close. The closures are necessary for road work. See reverse side for additional closures and detours.

Accessing eastbound I-4 from eastbound Anderson Street:

- Continue east on Anderson Street
- Turn left onto Rosalind Avenue
- Turn left onto Amelia Street
- Turn right onto Garland Avenue
- Follow signs to eastbound I-4

Accessing eastbound I-4 from westbound Anderson Street:

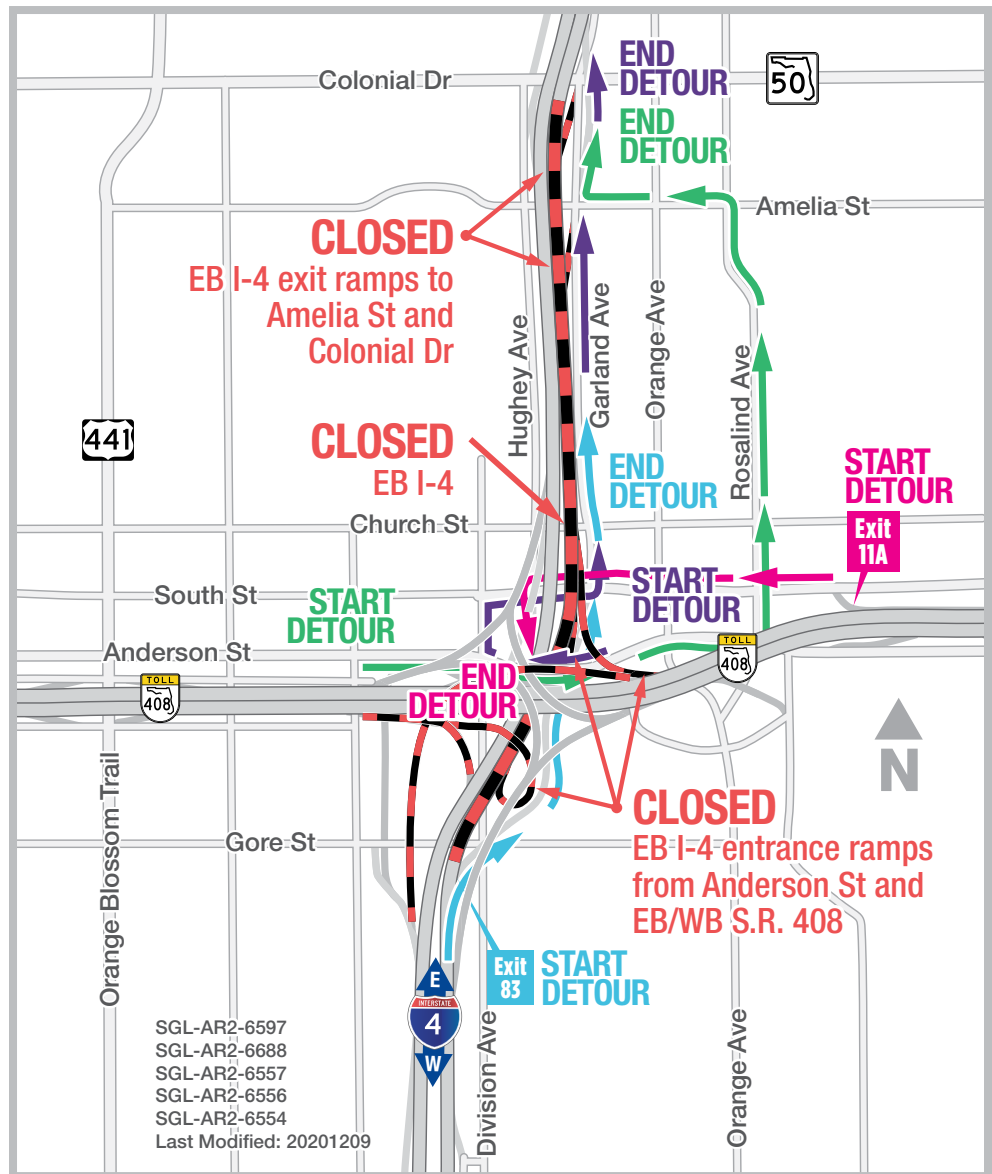
- Continue west on Anderson Street
- Turn right onto Division Avenue
- Turn right onto South Street
- Turn left onto Garland Avenue
- Follow signs to eastbound I-4

Traveling on eastbound I-4 to Amelia Street and Colonial Drive:

- Use Exit 83 to South Street
- Continue northbound on Garland Avenue

Accessing westbound I-4 from westbound S.R. 408:

- Use exit 11A to Rosalind Avenue
- Turn left onto South Street
- Follow signs to westbound I-4



Sign up for I-4 Construction Updates and Alerts at I4Ultimate.com

Learn about design and construction on the next 40 miles of I-4 at I4Beyond.com