



BUILDING A BETTER I-4

Stay Informed:

- » Project Hotline: 844-ULT-INFO (858-4636)
- » Sign up for email and text alerts at fdot.tips/I4Alerts
- » Follow @i4Ultimate on Twitter
- » Subscribe to our monthly newsletter at fdot.tips/I4News

WESTBOUND I-4 ENTRANCE AND EXIT RAMPS AT STATE ROAD 436 CLOSING FOR ONE NIGHT

The Florida Department of Transportation (FDOT) will temporarily close the westbound Interstate 4 (I-4) entrance and exit ramps at State Road (S.R.) 436 for one night.

The ramp closures will occur Friday, December 18, at 9 p.m. and will reopen the following morning by 7 a.m. Up to two lanes in both directions through S.R. 436 will also close at the same time, but will reopen by 8 a.m. the following morning.

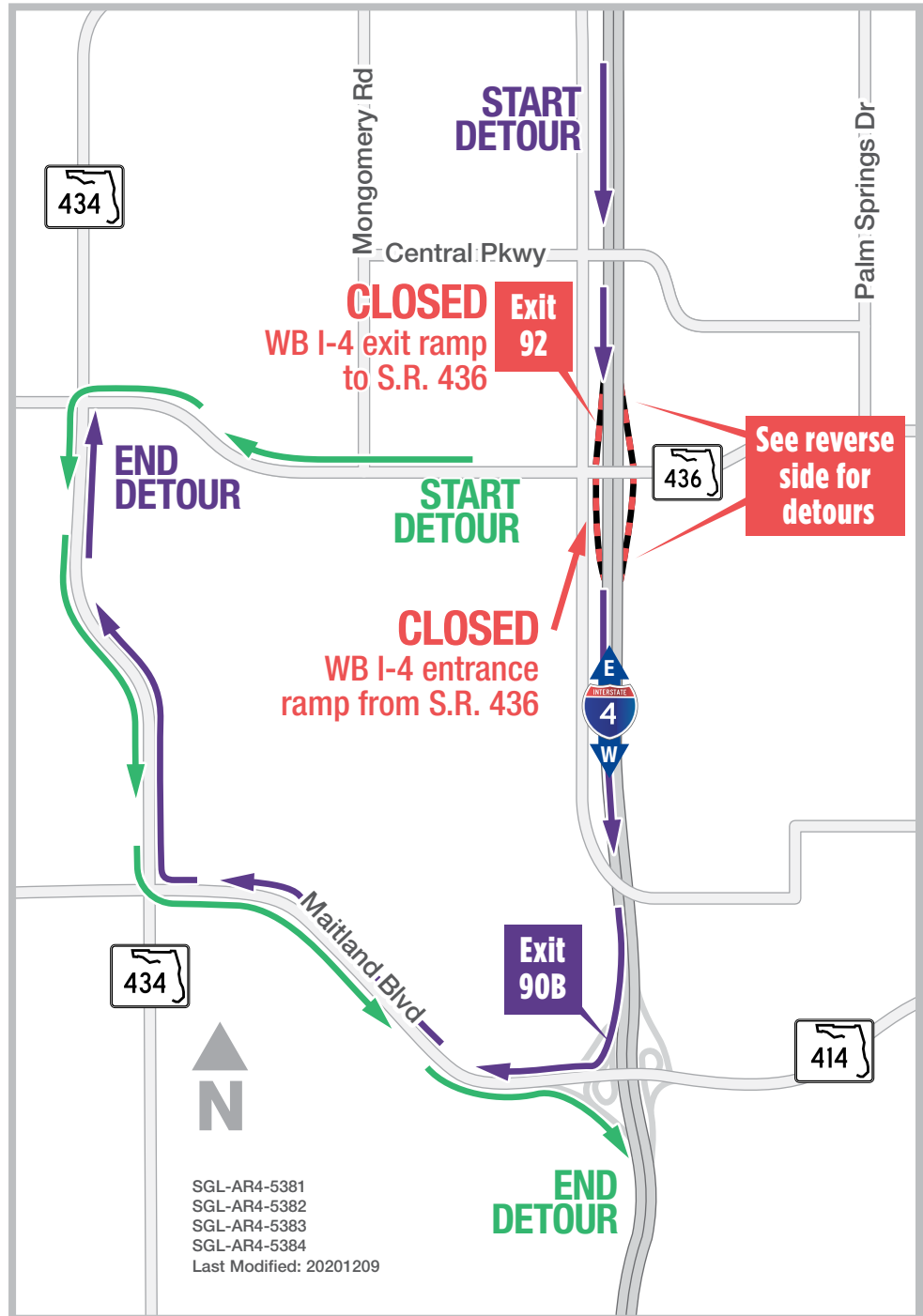
The temporary closures are to facilitate a traffic shift on S.R. 436 over I-4 to initiate new movements through the interchange and to allow continued construction of the pedestrian tunnel. In addition to these closures, the eastbound I-4 entrance and exit ramps at S.R. 436 will close during the same time period. Please see reverse side for more information.

Traveling westbound S.R. 436 to westbound I-4:

- Continue westbound S.R. 436
- Turn left onto S.R. 434
- Turn left onto Maitland Boulevard (S.R. 414)
- Follow signs to westbound I-4 entrance ramp

Traveling westbound I-4 to S.R. 436:

- Use Exit 90B to westbound Maitland Boulevard (S.R. 414)
- Take exit to S.R. 434
- Turn right onto S.R. 436



Sign up for I-4 Construction Updates and Alerts at I4Ultimate.com

Learn about design and construction on the next 40 miles of I-4 at I4Beyond.com



BUILDING A BETTER I-4

Stay Informed:

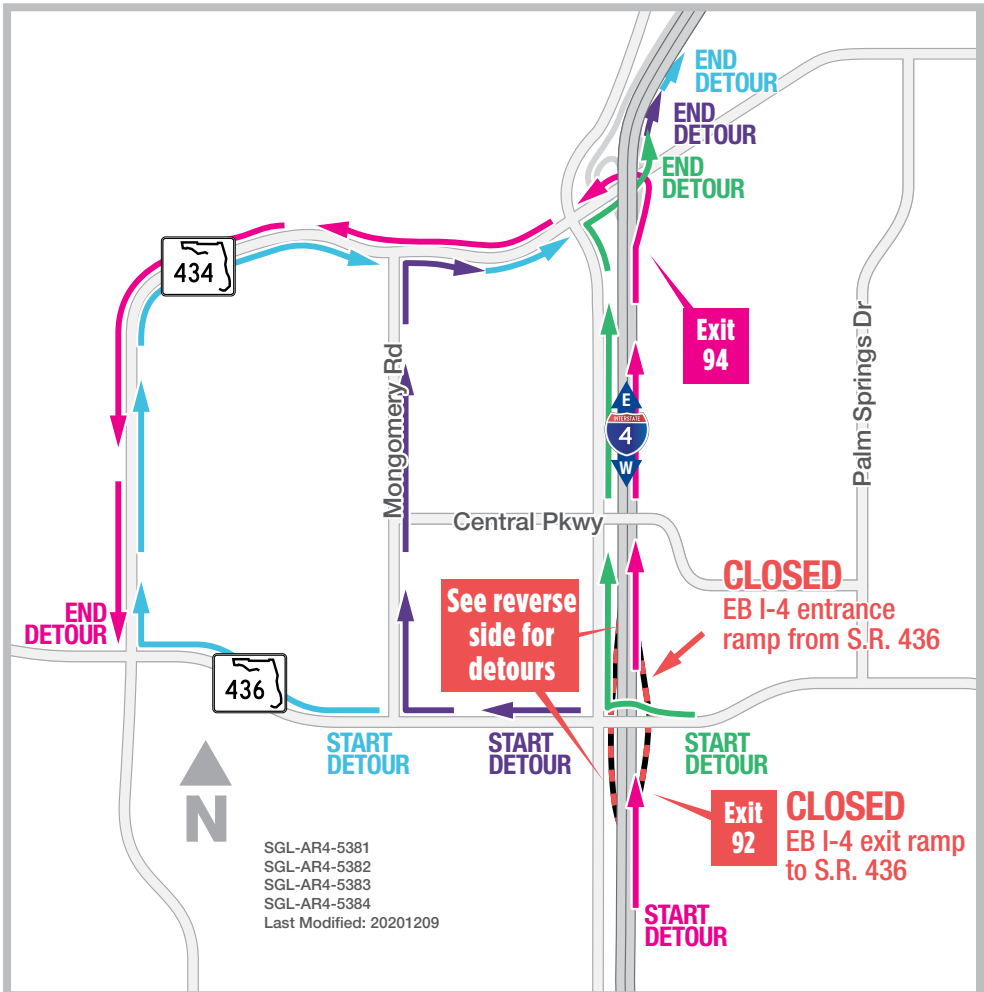
- » Project Hotline: 844-ULT-INFO (858-4636)
- » Sign up for email and text alerts at fdot.tips/I4Alerts
- » Follow @i4Ultimate on Twitter
- » Subscribe to our monthly newsletter at fdot.tips/I4News

EASTBOUND I-4 ENTRANCE AND EXIT RAMPS AT STATE ROAD 436 CLOSING FOR ONE NIGHT

The Florida Department of Transportation (FDOT) will temporarily close the eastbound Interstate 4 (I-4) entrance and exit ramps at State Road (S.R.) 436 for one night.

The ramp closures will occur Friday, December 18 at 8 p.m. and will reopen the following morning by 9 a.m. Up to two lanes in both directions through S.R. 436 will also close at the same time, but will reopen by 7 a.m. the following morning.

The temporary closures are to facilitate a traffic shift on S.R. 436 over I-4 to initiate new movements through the interchange and to allow continued construction of the pedestrian tunnel. In addition to these closures, the westbound I-4 entrance and exit ramps at S.R. 436 will close during the same time period. Please see reverse side for more information.



Traveling on S.R. 436 to eastbound I-4:

- Turn right onto Douglas Avenue
- Turn right onto S.R. 434
- Follow signs to eastbound I-4

Traveling on S.R. 436 near Montgomery Road to eastbound I-4:

- Turn right onto Montgomery Road
- Turn right onto S.R. 434
- Follow signs to eastbound I-4

Traveling on S.R. 436 near S.R. 434 to eastbound I-4:

- Turn right onto S.R. 434
- Follow signs to eastbound I-4

Traveling eastbound I-4 to S.R. 436:

- Continue on eastbound I-4
- Take Exit 94 to S.R. 434
- Turn left onto S.R. 434
- Continue to S.R. 436

PROJECT INFO

The \$2.3 billion I-4 Ultimate project is reconstructing 21 miles of interstate from west of Kirkman Road to east of State Road 434 in Longwood. For more information about I-4 Ultimate, contact David Parks, I-4 Ultimate Community Outreach Specialist, at 844-ULT-INFO (844-858-4636) or DavidParks@i4Ultimate.com.



Sign up for I-4 Construction Updates and Alerts at I4Ultimate.com

Learn about design and construction on the next 40 miles of I-4 at I4Beyond.com