



BUILDING A BETTER I-4

Stay Informed:

- » Project Hotline: 844-ULT-INFO (858-4636)
- » Sign up for email and text alerts at fdot.tips/I4Alerts
- » Follow @i4Ultimate on Twitter
- » Subscribe to our monthly newsletter at fdot.tips/I4News

EASTBOUND I-4 BETWEEN LEE ROAD AND MAITLAND BOULEVARD CLOSING EARLY MORNING APRIL 9

The Florida Department of Transportation (FDOT) is scheduled to temporarily close eastbound Interstate 4 (I-4) between Lee Road and Maitland Boulevard (State Road 414) from 12:30 a.m. to 3:30 a.m. on Friday, April 9.

The eastbound I-4 entrance ramp from Lee Road and the eastbound I-4 exit ramps to Maitland Boulevard and Sandspur Road will be closed at the same time. The closures require I-4 motorists to detour off the interstate for safety while crews install an overhead sign.

Traveling on eastbound I-4 to Maitland Boulevard:

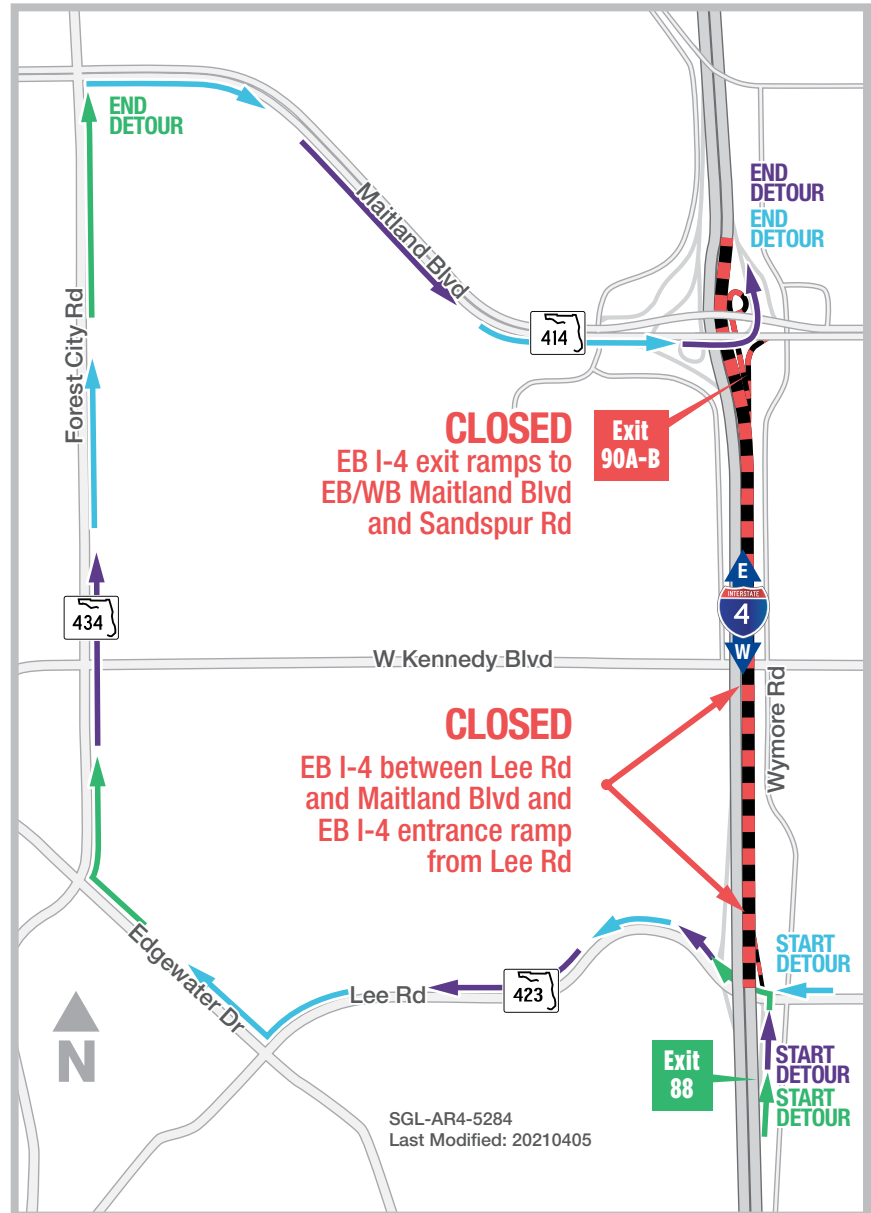
- Take Exit 88 to Lee Road and turn left
- Turn right onto Edgewater Drive
- Turn right onto S.R. 434
- Follow signage to Maitland Boulevard

Traveling on eastbound I-4:

- Follow green detour to Maitland Boulevard
- Follow signage to EB I-4

Traveling on Lee Road to eastbound I-4:

- Follow green detour to Maitland Boulevard
- Follow signage to EB I-4



PROJECT INFO

The \$2.3 billion I-4 Ultimate project is reconstructing 21 miles of interstate from west of Kirkman Road to east of State Road 434 in Longwood. For more information about I-4 Ultimate, contact David Parks, I-4 Ultimate Community Outreach Specialist, at 844-ULT-INFO (844-858-4636) or DavidParks@i4Ultimate.com.



Sign up for I-4 Construction Updates and Alerts at I4Ultimate.com

Learn about design and construction on the next 40 miles of I-4 at I4Beyond.com