



BUILDING A BETTER I-4

Stay Informed:

- » Project Hotline: 844-ULT-INFO (858-4636)
- » Sign up for email and text alerts at fdot.tips/I4Alerts
- » Follow @i4Ultimate on Twitter
- » Subscribe to our monthly newsletter at fdot.tips/I4News

WESTBOUND I-4 ENTRANCE AND EXIT RAMPS AT STATE ROAD 436 CLOSING NIGHTLY MAY 23-25

The Florida Department of Transportation (FDOT) will temporarily close the westbound Interstate 4 (I-4) entrance and exit ramps at State Road (S.R.) 436 nightly May 23-25.

The ramp closures will occur each night beginning as early as 10 p.m. and will reopen the following mornings by 5:30 a.m. Up to two lanes in both directions through S.R. 436 will also close at the same time.

The temporary closures are necessary while crews complete paving around the interchange.

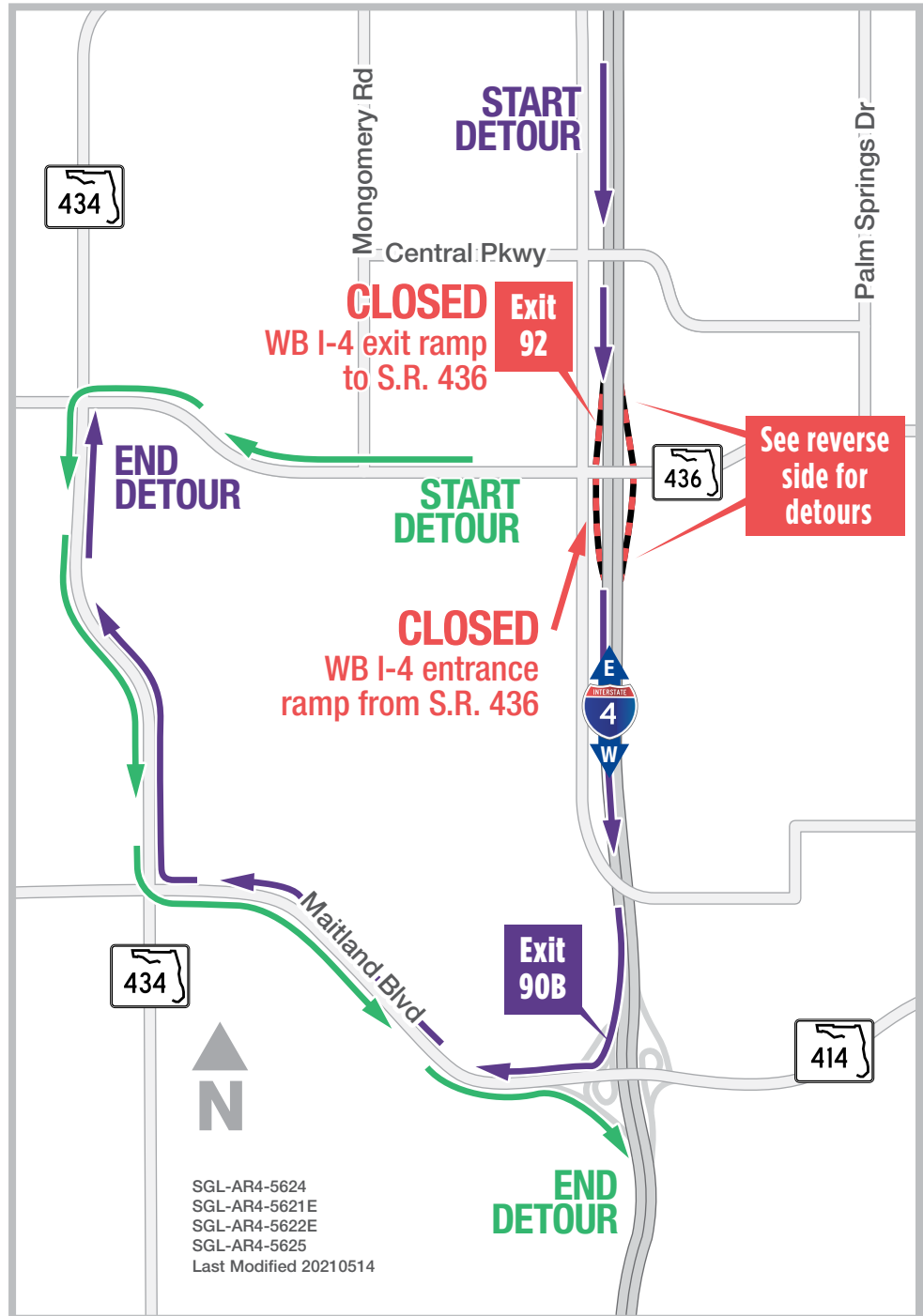
In addition to these closures, the eastbound I-4 entrance and exit ramps at S.R. 436 will close during the same time period. Please see reverse side for more information.

Traveling westbound S.R. 436 to westbound I-4:

- Continue on westbound S.R. 436
- Turn left onto S.R. 434
- Turn left onto Maitland Boulevard (S.R. 414)
- Follow signs to westbound I-4 entrance ramp

Traveling westbound I-4 to S.R. 436:

- Use Exit 90B to westbound Maitland Boulevard (S.R. 414)
- Take exit to S.R. 434
- Turn right onto S.R. 436



Sign up for I-4 Construction Updates and Alerts at I4Ultimate.com

Learn about design and construction on the next 40 miles of I-4 at I4Beyond.com



BUILDING A BETTER I-4

Stay Informed:

- » Project Hotline: 844-ULT-INFO (858-4636)
- » Sign up for email and text alerts at fdot.tips/I4Alerts
- » Follow @i4Ultimate on Twitter
- » Subscribe to our monthly newsletter at fdot.tips/I4News

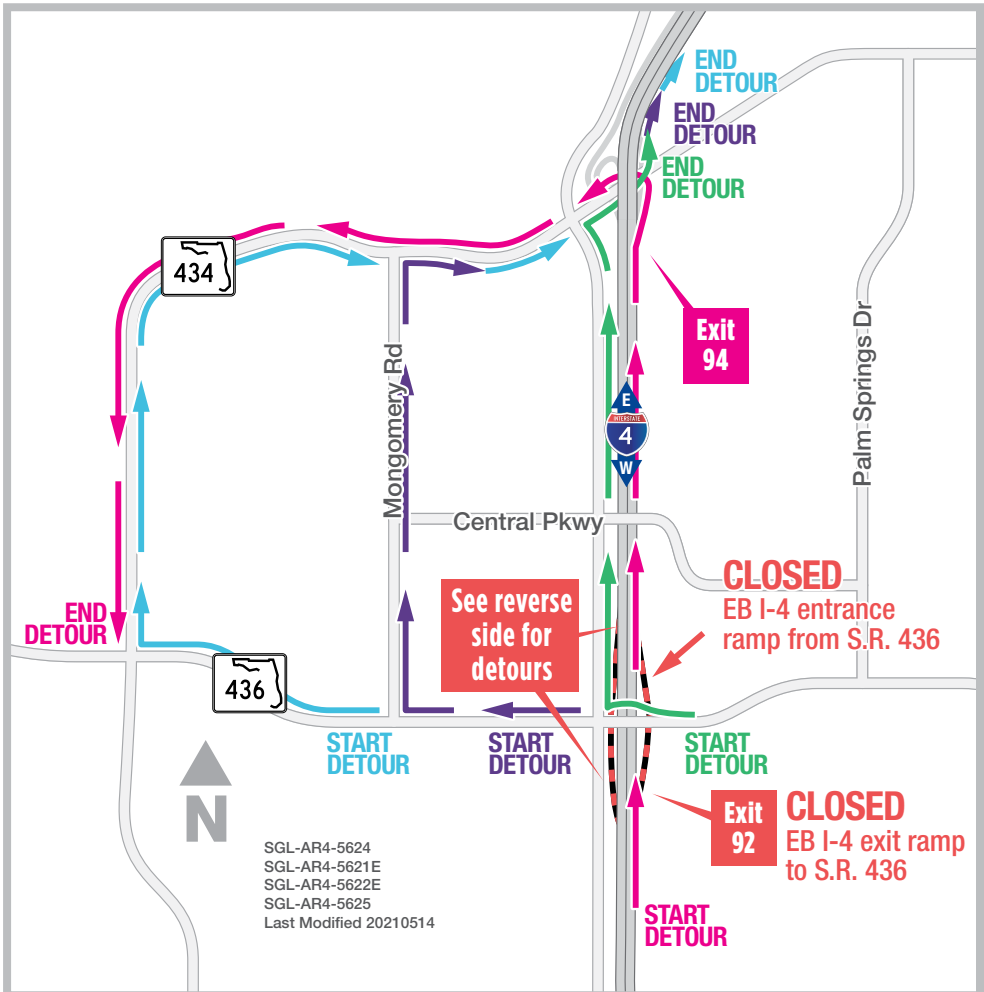
EASTBOUND I-4 ENTRANCE AND EXIT RAMPS AT STATE ROAD 436 CLOSING NIGHTLY MAY 23-25

The Florida Department of Transportation (FDOT) will temporarily close the eastbound Interstate 4 (I-4) entrance and exit ramps at State Road (S.R.) 436 nightly May 23-25.

The ramp closures will occur each night beginning as early as 10 p.m. and will reopen the following mornings by 5:30 a.m. Up to two lanes in both directions through S.R. 436 will also close at the same time.

The temporary closures are necessary while crews complete paving around the interchange.

In addition to these closures, the westbound I-4 entrance and exit ramps at S.R. 436 will close during the same time period. Please see reverse side for more information.



Traveling on S.R. 436 to eastbound I-4:

- Turn right onto Douglas Avenue
- Turn right onto S.R. 434
- Follow signs to eastbound I-4

Traveling on S.R. 436 near Montgomery Road to eastbound I-4:

- Turn right onto Montgomery Road
- Turn right onto S.R. 434
- Follow signs to eastbound I-4

Traveling on S.R. 436 near S.R. 434 to eastbound I-4:

- Turn right onto S.R. 434
- Follow signs to eastbound I-4

Traveling eastbound I-4 to S.R. 436:

- Continue on eastbound I-4
- Take Exit 94 to S.R. 434
- Turn left onto S.R. 434
- Continue to S.R. 436

PROJECT INFO

The \$2.3 billion I-4 Ultimate project is reconstructing 21 miles of interstate from west of Kirkman Road to east of State Road 434 in Longwood. For more information about I-4 Ultimate, contact David Parks, I-4 Ultimate Community Outreach Specialist, at 844-ULT-INFO (844-858-4636) or DavidParks@i4Ultimate.com.



Sign up for I-4 Construction Updates and Alerts at I4Ultimate.com

Learn about design and construction on the next 40 miles of I-4 at I4Beyond.com